

WAAS CH 73012 W08A	APP CRS 074°	Rwy Ldg TDZE Apt Elev	6301 1486 1497
--	------------------------	-----------------------------	---

RNAV (GPS) RWY 8

EASTERN OREGON RGNL AT PENDLETON (PDT)

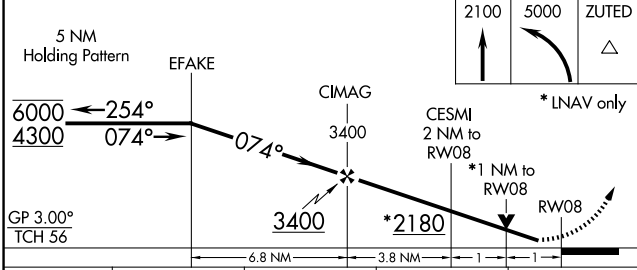
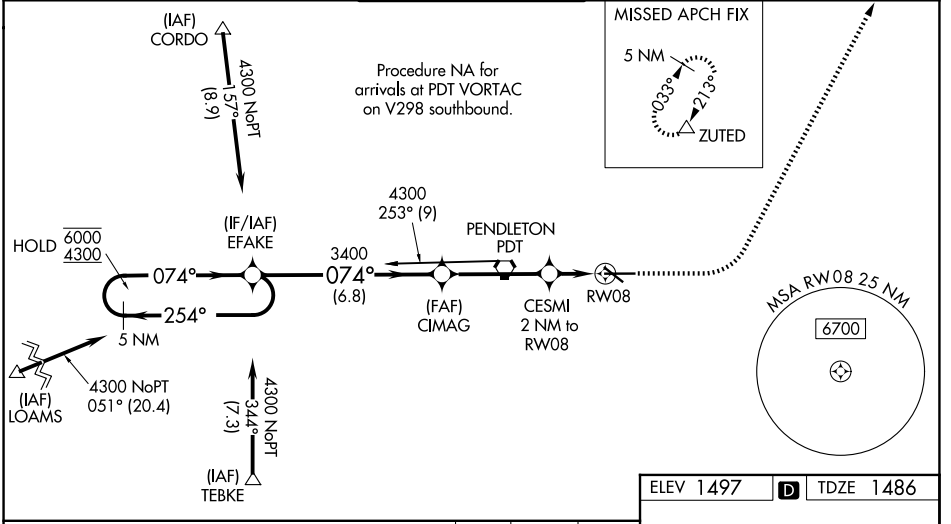
RNP APCH.

⚠ Circling to Rwy 11 NA at night. Baro-VNAV and VDP NA when using Walla Walla altimeter setting. Rwy 8 helicopter visibility reduction below 3/4 SM NA. For uncompensated Baro-VNAV systems, LNAV/VNAV NA below -17°C or above 54°C. Inop table does not apply to LPV all Cats and LNAV Cats C/D. When local altimeter setting not received, use Walla Walla altimeter setting and increase all DA 122 feet and all visibilities 1/4 SM. Increase all MDA 140 feet and LNAV Cat C/D and Circling Cat C visibilities 1/4 SM and Circling Cat D 1/2 SM. For inop ALS, increase LNAV/VNAV all Cats visibility to 3/8 SM. For inop ALS when using Walla Walla altimeter setting, increase LNAV/VNAV all Cats visibility to 1/8 SM.

ODALS

MISSED APPROACH:
Climb to 2100 then climbing left turn 5000 to ZUTED and hold.

ASOS 118.325	SPOKANE APP CON * 133.15 379.15	PENDLETON TOWER * 119.7 (CTAF) 257.8	GND CON 121.9 257.8	UNICOM 122.95
------------------------	---	--	-------------------------------	-------------------------



ELEV 1497	D	TDZE 1486
-----------	----------	-----------

REIL Rws 11 and 29 **Ⓛ**
MIRL Rwy 11-29 **Ⓛ**
HIRL Rwy 8-26 **Ⓛ**

CATEGORY	A	B	C	D
LPV DA		1736-3/4	250 (300-3/4)	
LNAV/VNAV DA		1769-3/4	283 (300-3/4)	
LNAV MDA	1860-3/4	374 (400-3/4)	1860-1	374 (400-1)
CIRCLING	1920-1 423 (500-1)	1960-1 463 (500-1)	1980-1 1/2 483 (500-1 1/2)	2200-2 1/4 703 (800-2 1/4)

NW-1, 11 JUN 2026 to 09 JUL 2026

NW-1, 11 JUN 2026 to 09 JUL 2026