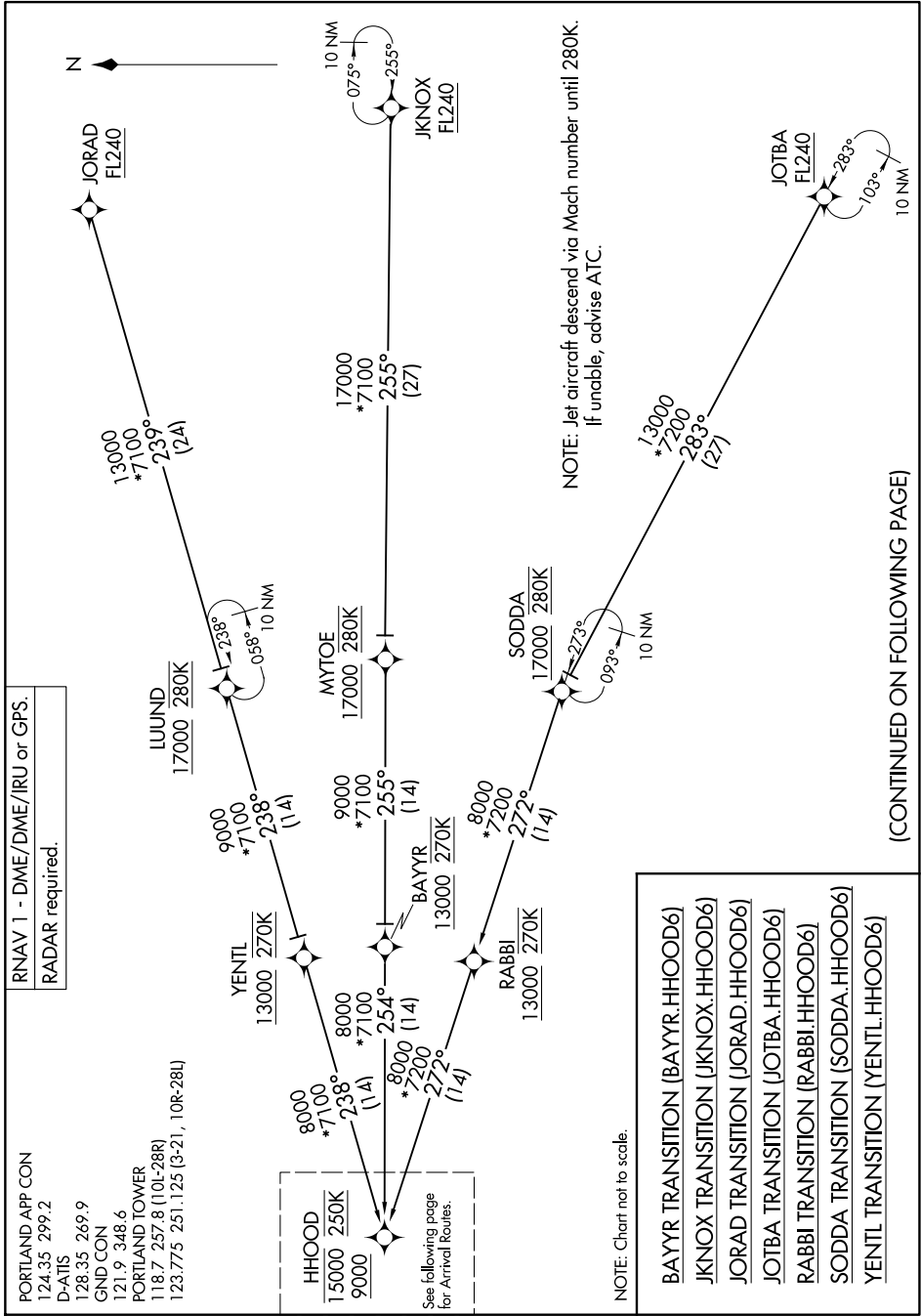


HHOOD SIX ARRIVAL (RNAV) Transition Routes

9202 707 60 07 9202 N007 14 1-WN

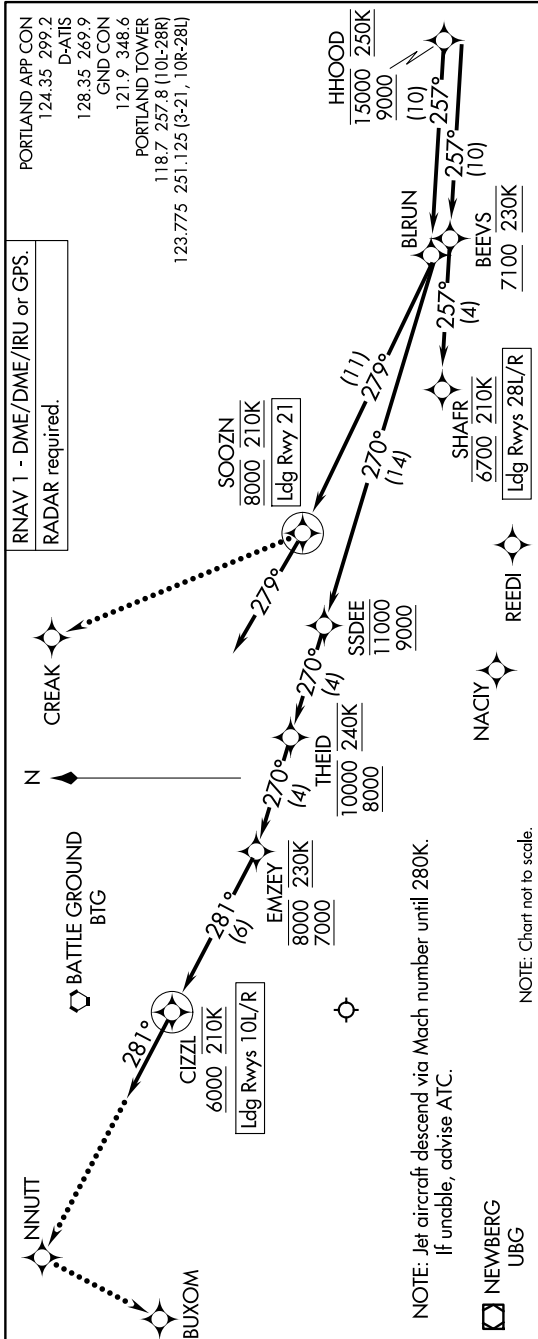


(CONTINUED ON FOLLOWING PAGE)

NW-1, 11 JUN 2026 to 09 JUL 2026

HHOOD SIX ARRIVAL (RNAV) Arrival Routes

9202 704 60 07 9202 N004 14 1-WN



ARRIVAL ROUTE DESCRIPTION

LANDING RUNWAYS 10L/R: From HHOOD on track 257° to BURUN, then on track 270° to cross SSDEE between 9000 and 11000, then on track 270° to cross THEID between 8000 and 10000 and at 240K, then on track 270° to cross EMZEY between 7000 and 8000 and at 230K, then on track 281° to cross CIZZL at or above 6000 and at 210K, then on track 281°. Expect RNP Rwy 10L/R approach or RADAR vectors to final approach course.

LANDING RUNWAY 21: From HHOOD on track 257° to BURUN, then on track 279° to cross SOOZN at 8000 and at 210K, then on track 279°. Expect RADAR vectors to final approach course.

LANDING RUNWAYS 28L/R: From HHOOD on track 257° to cross BEEVS at or above 7100 and at 230K, then on track 257° to cross SHAFR at 6700 and at 210K. Expect RNAV or ILS RWY 28L/R approach.

LOST COMMUNICATIONS
Follow published crossing altitudes and then maintain lowest Rwy transition altitude until established on approach procedure.
RUNWAYS 10L/R: After CIZZL proceed to NNUTT, then turn left to BUXOM and proceed on the ILS RWY 10L approach.
RUNWAY 21: After SOOZN turn right to CREAK and proceed on the LOC/DME RWY 21 approach.
RUNWAYS 28L/R: After SHAFR proceed on the ILS or LOC RWY 28R approach.

NW-1, 11 JUN 2026 to 09 JUL 2026