

HI-ILS or LOC RWY 28R

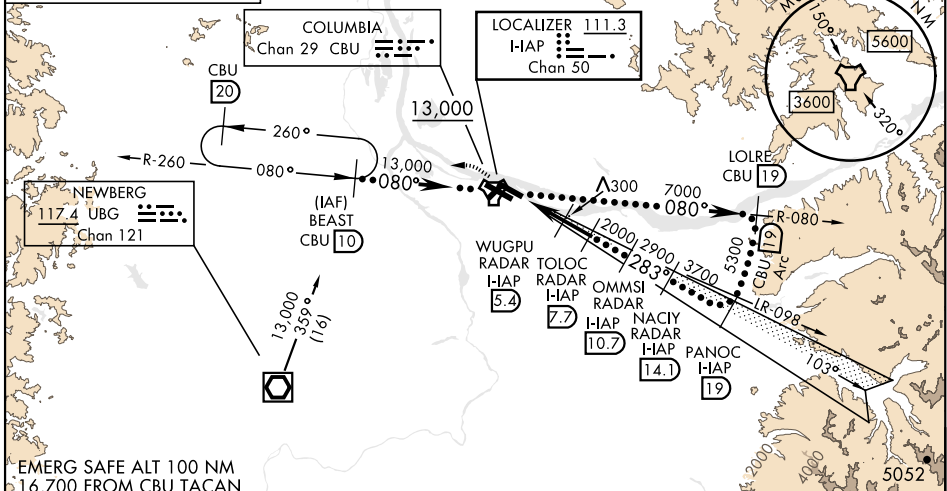
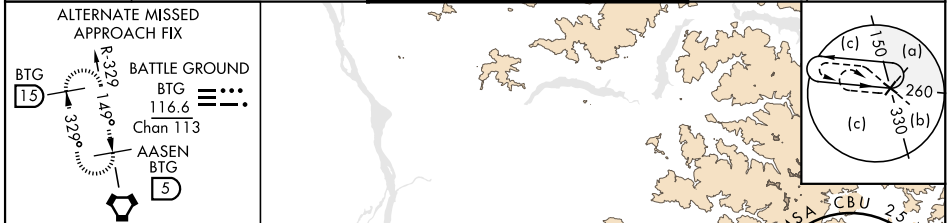
LOC/DME I-IAP 111.3 Chan 50	APCH CRS 283°	Rwy Idg TDZE Arpt Elev 9290 31 31
---	-------------------------	---

[USAF]

PORTLAND INTL (KPDJ)

RADAR or DME required.		MALSR	MISSED APPROACH: Climb to 600 then climbing left turn to 4000 on CBU TACAN R-260 to BEAST/ CBU 10 DME and hold, continue climb in holding to 4000.	
*When ALS inop, increase CAT E RVR to 40. **When ALS inop, increase CAT E vis to 1/2.				

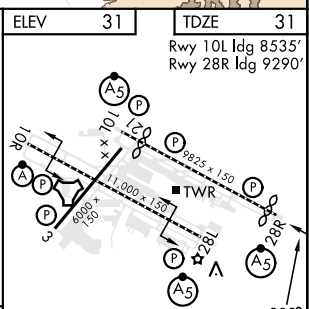
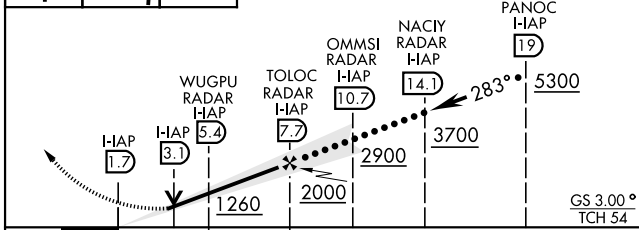
ATIS 128.35 269.9	APP CON 118.1 284.6 (100°-279°) 124.35 299.2 (280°-099°)	TOWER 118.7 257.8 Rwy 10L-28R 123.775 251.125 Rwy 3-21, 10R-28L	GND CON 121.9 348.6	CLNC DEL 120.125 318.1
-----------------------------	--	---	-------------------------------	----------------------------------



NW-1, 11 JUN 2026 to 09 JUL 2026

NW-1, 11 JUN 2026 to 09 JUL 2026

600	4000	BEAST CBU R-260	VGSI and ILS glidepath not coincident (VGSI Angle 3.00/TCH 70).	Use I-IAP DME when on LOC course.	ELEV 31	TDZE 31
-----	------	-----------------	---	-----------------------------------	---------	---------



CATEGORY	C	D	E
S-ILS 28R *	281/24	250	(300-1/2)
S-LOC 28R **	560/55	529	(600-1)
CIRCLING	1060-3	1029	(1100-3)
			1140-3 1109 (1200-3)

REIL Rwy 3 and 21 TDZL/CL Rwy 10R MIRL Rwy 3-21 HIRL Rwy 10L-28R and 10R-28L					
FAF to MAP 6 NM					
Knots	120	140	160	180	200
Min:Sec	3:00	2:34	2:15	2:00	1:48

HI-ILS or LOC RWY 28R