

# HRMNS SIX DEPARTURE (RNAV)

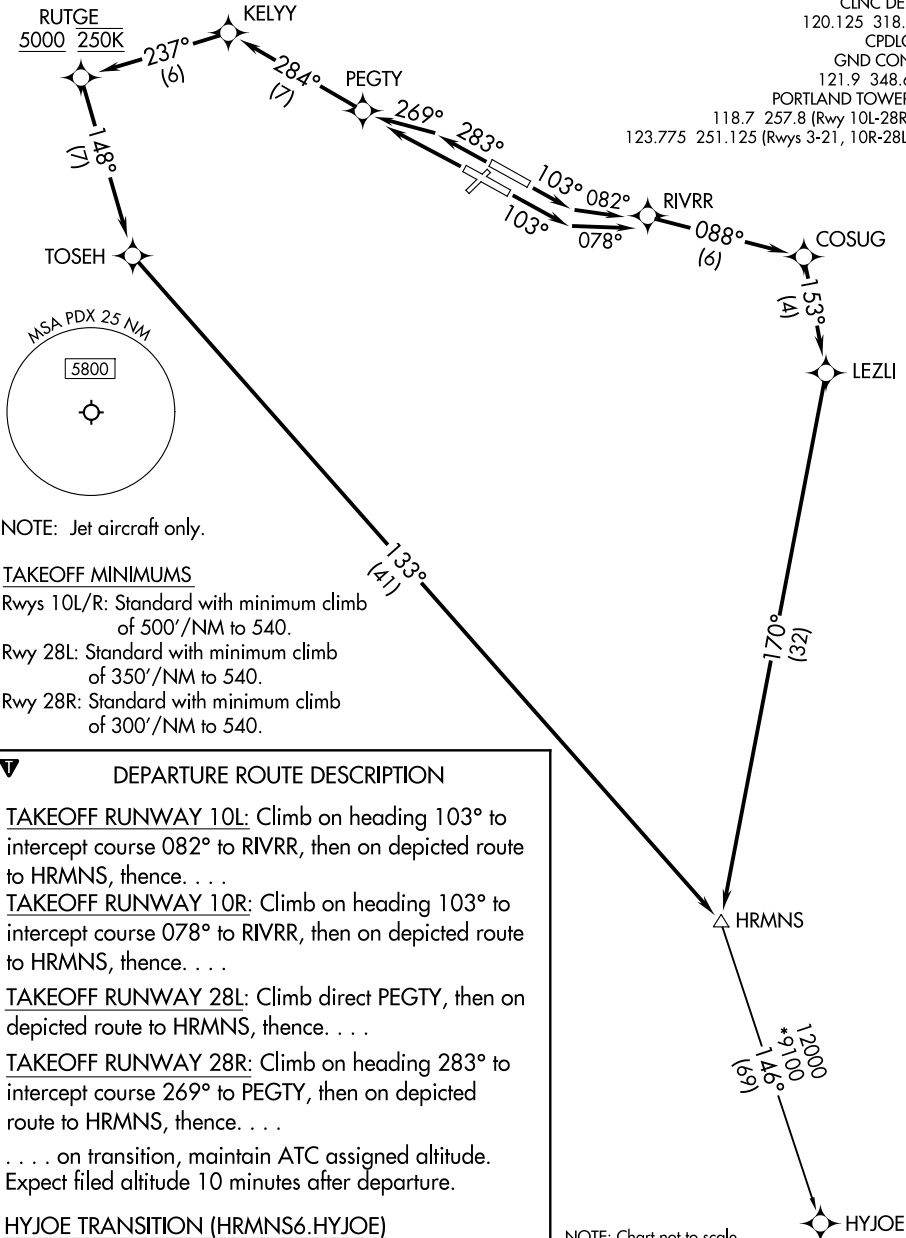
AL-330 (FAA)

PORTLAND INTL (PDX)  
PORTLAND, OREGON

RNAV 1 - DME/DME/IRU or GPS.  
RADAR required for non-GPS equipped aircraft.

**TOP ALTITUDE:  
ASSIGNED BY ATC**

PORTLAND DEP CON  
118.1 284.6  
D-ATIS  
128.35 269.9  
CLNC DEL  
120.125 318.1  
CPDLC  
GND CON  
121.9 348.6  
PORTLAND TOWER  
118.7 257.8 (Rwy 10L-28R)  
123.775 251.125 (Rwys 3-21, 10R-28L)



NOTE: Jet aircraft only.

### TAKEOFF MINIMUMS

- Rwys 10L/R: Standard with minimum climb of 500'/NM to 540.
- Rwy 28L: Standard with minimum climb of 350'/NM to 540.
- Rwy 28R: Standard with minimum climb of 300'/NM to 540.

### DEPARTURE ROUTE DESCRIPTION

**TAKEOFF RUNWAY 10L:** Climb on heading 103° to intercept course 082° to RIVRR, then on depicted route to HRMNS, thence. . . .

**TAKEOFF RUNWAY 10R:** Climb on heading 103° to intercept course 078° to RIVRR, then on depicted route to HRMNS, thence. . . .

**TAKEOFF RUNWAY 28L:** Climb direct PEGTY, then on depicted route to HRMNS, thence. . . .

**TAKEOFF RUNWAY 28R:** Climb on heading 283° to intercept course 269° to PEGTY, then on depicted route to HRMNS, thence. . . .

. . . . on transition, maintain ATC assigned altitude. Expect filed altitude 10 minutes after departure.

HYJOE TRANSITION (HRMNS6.HYJOE)

NOTE: Chart not to scale.

# HRMNS SIX DEPARTURE (RNAV)

NW-1, 11 JUN 2026 to 09 JUL 2026

NW-1, 11 JUN 2026 to 09 JUL 2026