

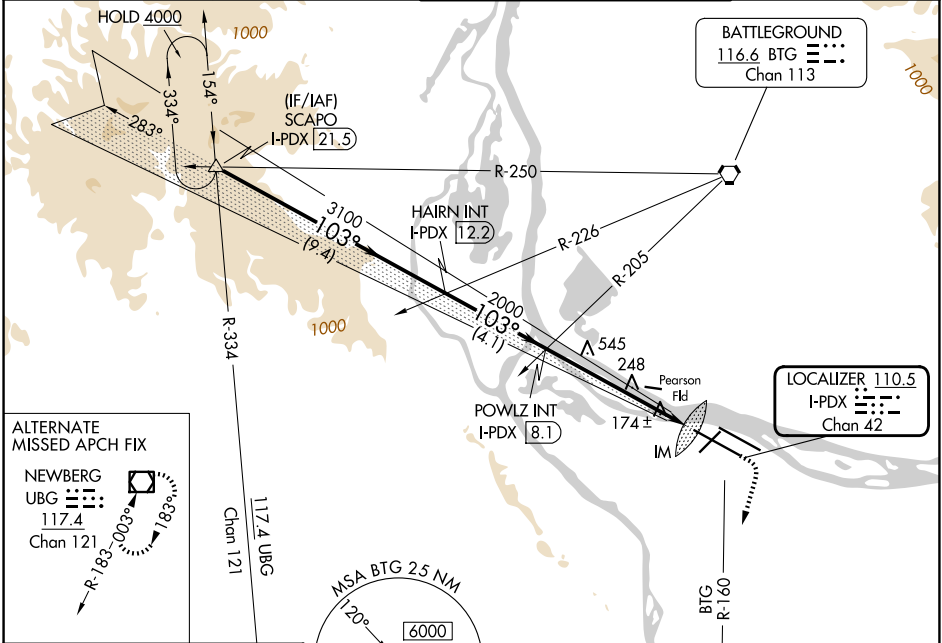
LOC/DME I-PDX <b>110.5</b> Chan 42	APP CRS <b>103°</b>	Rwy Ldg <b>11000</b> TDZE <b>24</b> Apt Elev <b>31</b>
--	------------------------	--

# ILS RWY 10R (SA CAT I)

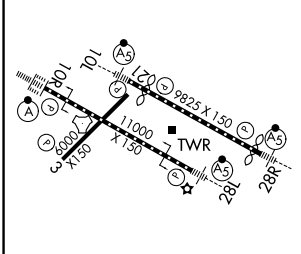
PORTLAND INTL (PDX)

<b>Simultaneous approach authorized.</b> Requires specific OPSPEC, MSPEC, or LOA approval and use of HUD to DH.	ALSF-2 	<b>MISSED APPROACH:</b> Climb to 1100 then climbing right turn to 5000 on BTG VORTAC R-160 to MULES/BTG 17.7 DME and hold, continue climb-in-hold to 5000.
	(A)	

D-ATIS <b>128.35 269.9</b>	PORTLAND APP CON <b>124.35 299.2</b>	PORTLAND TOWER <b>118.7 257.8 (10L-28R)</b> <b>123.775 251.125 (3-21, 10R-28L)</b>	GND CON <b>121.9 348.6</b>
-------------------------------	---	--	-------------------------------



ELEV 31	<b>D</b>	TDZE 24
---------	----------	---------



VGS1 and ILS glidepath not coincident (VGS1 Angle 3.00/TCH 71). SCAPO I-PDX 21.5 HAIRN INT I-PDX 12.2 POWLZ INT I-PDX 8.1 1100 5000 MULES 
CATEGORY A B C D S-ILS 10R RA 157/14 150 DA 174

REIL Rwy 3 and 21  
 TDZL/RCLS Rwy 10R  
 MIRL Rwy 3-21  
 HIRL Rwy 10L-28R and 10R-28L

**SA CATEGORY I ILS-SPECIAL AIRCREW & AIRCRAFT CERTIFICATION REQUIRED**

NW-1, 11 JUN 2026 to 09 JUL 2026

NW-1, 11 JUN 2026 to 09 JUL 2026