

LOC/DME I-VDG <b>111.3</b> Chan <b>50</b>	APP CRS <b>103°</b>	Rwy Ldg <b>8535</b> TDZE <b>30</b> Apt Elev <b>31</b>
---	------------------------	---

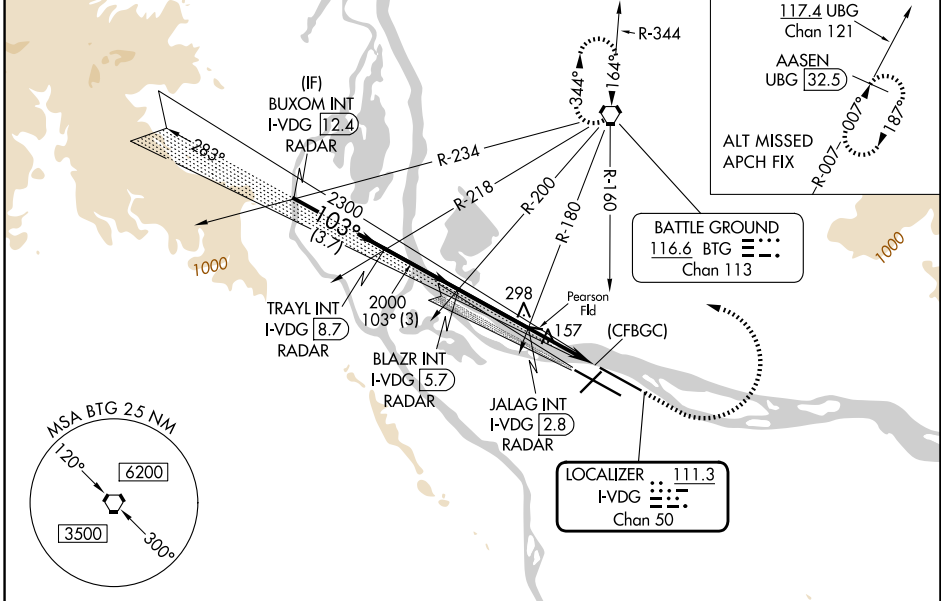
# ILS or LOC RWY 10L

PORTLAND INTL (PDX)

**⚠** Simultaneous approach authorized with Rwy 10R.  
**⚠** For inoperative MALS/R, increase S-ILS visibility all Cats to RVR 4500.  
 S-LOC Cat E visibility to RVR 6000. RADAR or DME required.

**MALS/R**  
  
**MISSED APPROACH:** Climb to 800 then climbing left turn to 4200 on BTG VORTAC R-160 to BTG VORTAC and hold, continue climb-in-hold to 4200.

D-ATIS <b>128.35 269.9</b>	PORTLAND APP CON <b>124.35 299.2</b>	PORTLAND TOWER <b>118.7 257.8 (10L-28R)</b> <b>123.775 251.125 (3-21, 10R-28L)</b>	GND CON <b>121.9 348.6</b>
-------------------------------	---	--	-------------------------------

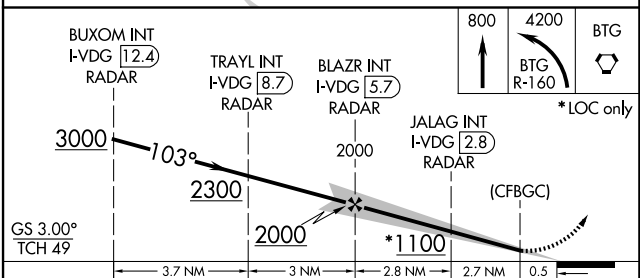
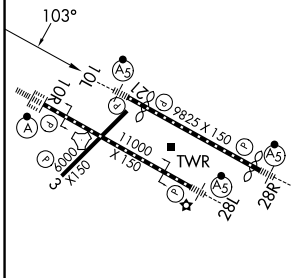


NW-1, 11 JUN 2026 to 09 JUL 2026

NW-1, 11 JUN 2026 to 09 JUL 2026

ELEV 31	<b>D</b>	TDZE 30
---------	----------	---------

## RADAR REQUIRED



REIL Rws 3 and 21  
 TDZL/RCLS Rwy 10R  
 MIRL Rwy 3-21  
 HIRL Rws 10L-28R and 10R-28L  
 FAF to MAP 5.6 NM

Knots	60	90	120	150	180
Min:Sec	5:36	3:44	2:48	2:14	1:52

CATEGORY	A	B	C	D	E
S-ILS 10L	293/24		263 (300-1/2)		
S-LOC 10L	420/24		390 (400-1/2)		420/35 390 (400-5/8)
CIRCLING	720-1 689 (700-1)		760-1 729 (800-1)		1060-3 1029 (1100-3) 1140-3 1109 (1200-3)