

LOC/DME I-PDX	APP CRS	Rwy Ldg	10R	10L
110.5	103°	11000	8535	
Chan 42		TDZE	24	30
		Apt Elev	31	31

ILS or LOC RWY 10R

PORTLAND INTL (PDX)

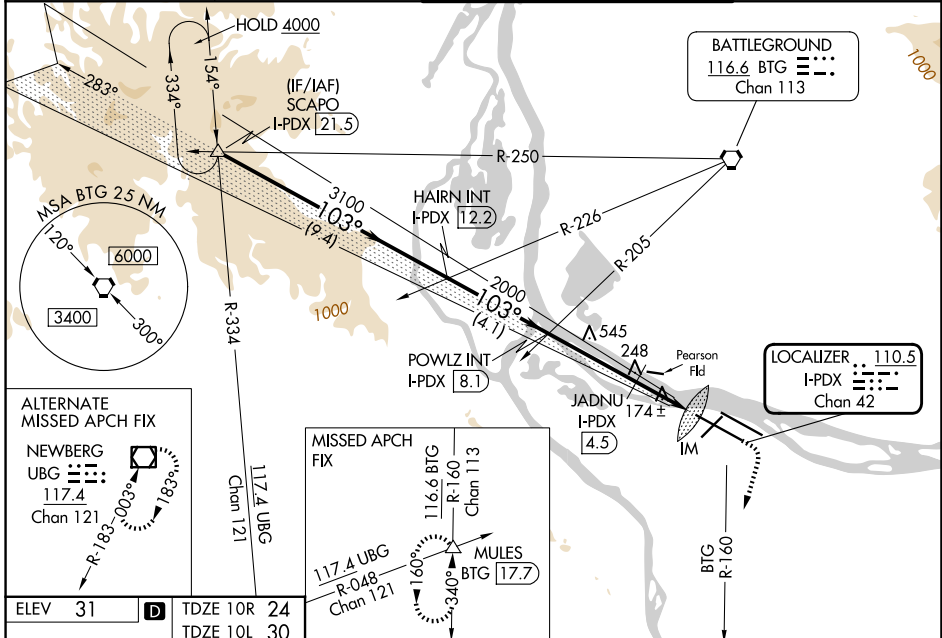
⚠ Simultaneous approach authorized. Inop table does not apply to Sidestep LOC 10L. For inop ALS increase S-ILS 10R Cat E visibility to RVR 4000. For inop ALS increase S-LOC 10R Cat C/D/E visibility to 2½ SM. For inop ALS increase JADNU fix minimums S-LOC 10R Cat C/D/E visibility to RVR 6000. Sidestep NA until passing JADNU.

ALSF-2 Rwy 10R

MALSR Rwy 10L

MISSED APPROACH: Climb to 1100 then climbing right turn to 5000 on BTG VORTAC R-160 to MULES/BTG 17.7 DME and hold, continue climb-in-hold to 5000.

D-ATIS 128.35 269.9	PORTLAND APP CON 124.35 299.2	PORTLAND TOWER 118.7 257.8 (10L-28R) 123.775 251.125 (3-21, 10R-28L)	GND CON 121.9 348.6
-------------------------------	---	--	-------------------------------



ALTERNATE MISSED APCH FIX

NEWBERG
UBG
117.4
Chan 121

R-183 200°

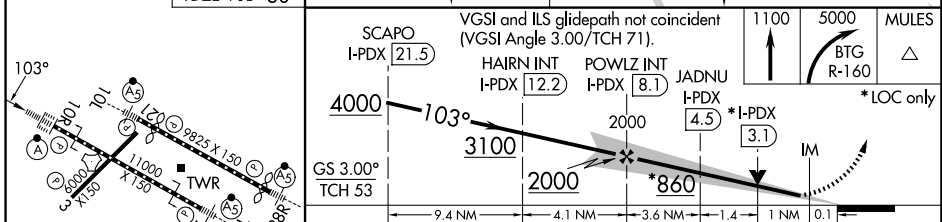
MISSED APCH FIX

117.4 UBG
R-048
Chan 121

116.6 BTG
R-160
Chan 113

MULES
BTG (17.7)

ELEV 31	D	TDZE 10R 24	TDZE 10L 30
---------	----------	-------------	-------------



REIL Rwy 3 and 21	TDZL/RCLS Rwy 10R	MIRL Rwy 3-21	HIRL Rwy 10L-28R and 10R-28L	
FAF to MAP 6 NM				
Knots	60	90	120 150 180	
Min:Sec	6:00	4:00	3:00 2:24 2:00	
CATEGORY	A	B	C D E	
S-ILS 10R	224/18 200 (200-½)			
S-LOC 10R	860/24 836 (900-½)	860/40 836 (900-¾)	860-1⅞ 836 (900-1⅞)	
CIRCLING	860-1¼	829 (900-1¼)	1060-3 1029 (1100-3)	1140-3 1109 (1200-3)
JADNU FIX MINIMUMS				
S-LOC 10R	440/24	416 (500-½)	440/40 416 (500-¾)	
SIDESTEP 10L	800-1 770 (800-1)	800-1¼ 770 (800-1¼)	800-2½ 770 (800-2½)	800-2¾ 770 (800-2¾)

NW-1, 11 JUN 2026 to 09 JUL 2026

NW-1, 11 JUN 2026 to 09 JUL 2026