

LOC/DME I-JMJ <b>110.5</b> Chan 42	APP CRS <b>283°</b>	Rwy Ldg <b>11000</b> TDZE <b>23</b> Apt Elev <b>31</b>
--	------------------------	--

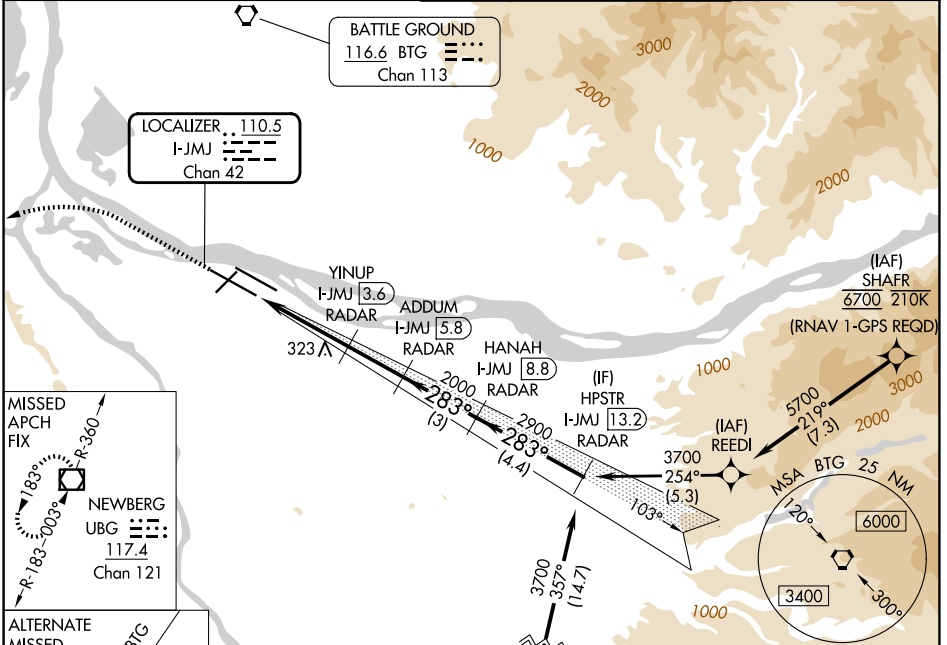
# ILS or LOC RWY 28L

PORTLAND INTL (PDX)

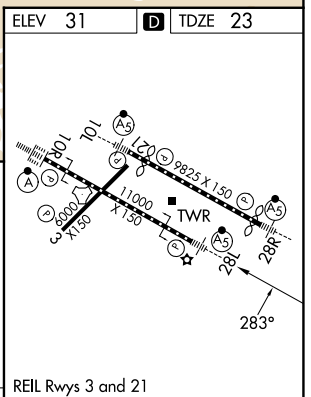
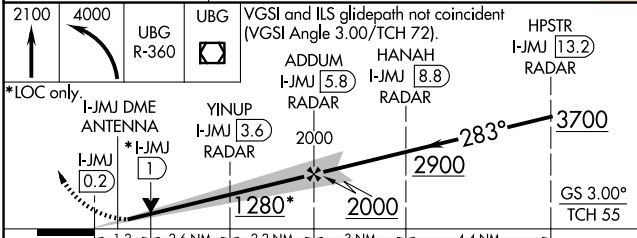
Simultaneous approach authorized. Autopilot coupled approach NA below 880. DME or RADAR required. For inop ALS, increase S-ILS 28L Cat E visibility to RVR 4500 and increase S-LOC 28L Cat E visibility to 1 1/2 SM.

MALSR MISSED APPROACH: Climb to 2100 then climbing left turn to 4000 on UBG R-360 to UBG VOR/DME and hold.

D-ATIS <b>128.35 269.9</b>	PORTLAND APP CON <b>124.35 299.2</b>	PORTLAND TOWER <b>118.7 257.8 (10L-28R)</b> <b>123.775 251.125 (3-21, 10R-28L)</b>	GND CON <b>121.9 348.6</b>
-------------------------------	---	--	-------------------------------



ELEV 31	TDZE 23
---------	---------



CATEGORY	A	B	C	D	E
S-ILS 28L	306/24 283 (300-1/2)				
S-LOC 28L	480/24	457 (500-1/2)	480/45		457 (500-7/8)
CIRCLING	720-1 689 (700-1)	760-1 729 (800-1)	1060-3	1029 (1100-3)	1140-3 1109 (1200-3)

NW-1, 11 JUN 2026 to 09 JUL 2026

NW-1, 11 JUN 2026 to 09 JUL 2026