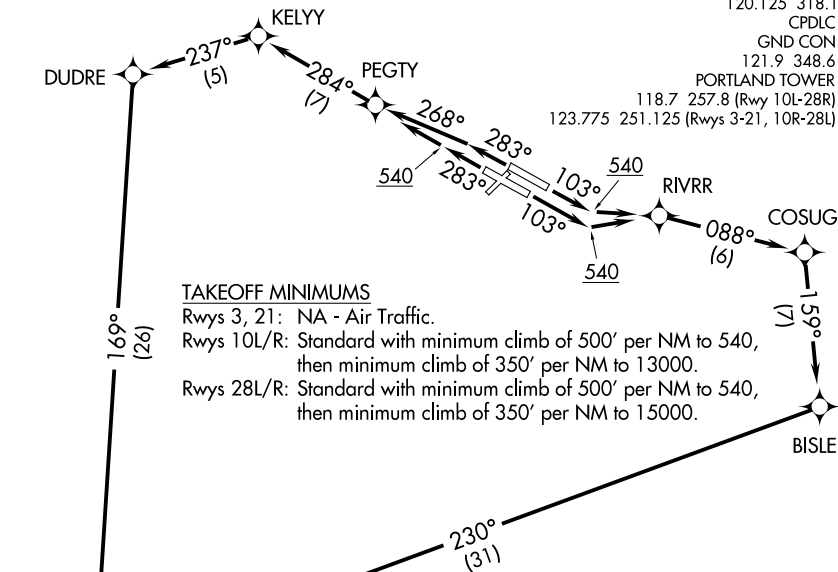


NW-1, 11 JUN 2026 to 09 JUL 2026

NW-1, 11 JUN 2026 to 09 JUL 2026

PORTLAND DEP CON
118.1 284.6
D-ATIS
128.35 269.9
CLNC DEL
120.125 318.1
CPDLC
GND CON
121.9 348.6
PORTLAND TOWER
118.7 257.8 (Rwy 10L-28R)
123.775 251.125 (Rwys 3-21, 10R-28L)



TAKEOFF MINIMUMS

Rwys 3, 21: NA - Air Traffic.
Rwys 10L/R: Standard with minimum climb of 500' per NM to 540, then minimum climb of 350' per NM to 13000.
Rwys 28L/R: Standard with minimum climb of 500' per NM to 540, then minimum climb of 350' per NM to 15000.

NOTE: Turbojet aircraft only.
NOTE: RADAR required for non-GPS equipped aircraft.
NOTE: RNAV 1.
NOTE: DME/DME/IRU or GPS required.

NOTE: Chart not to scale.

DEPARTURE ROUTE DESCRIPTION

TAKEOFF RUNWAYS 10L/R: Climb heading 103° to 540, then direct to RIVRR, then on depicted route, thence. . .
TAKEOFF RUNWAY 28L: Climb heading 283° to 540, then direct to PEGTY, then on depicted route, thence. . .
TAKEOFF RUNWAY 28R: Climb heading 283°, intercept course 268° to PEGTY, then on depicted route thence. . .
. . . via (Transition), maintain assigned altitude, expect filed altitude 10 minutes after departure.

EASON TRANSITION (MINNE5.EASON)

FAMUK TRANSITION (MINNE5.FAMUK)

HISKU TRANSITION (MINNE5.HISKU)

