

# RNAV (RNP) Y RWY 28L

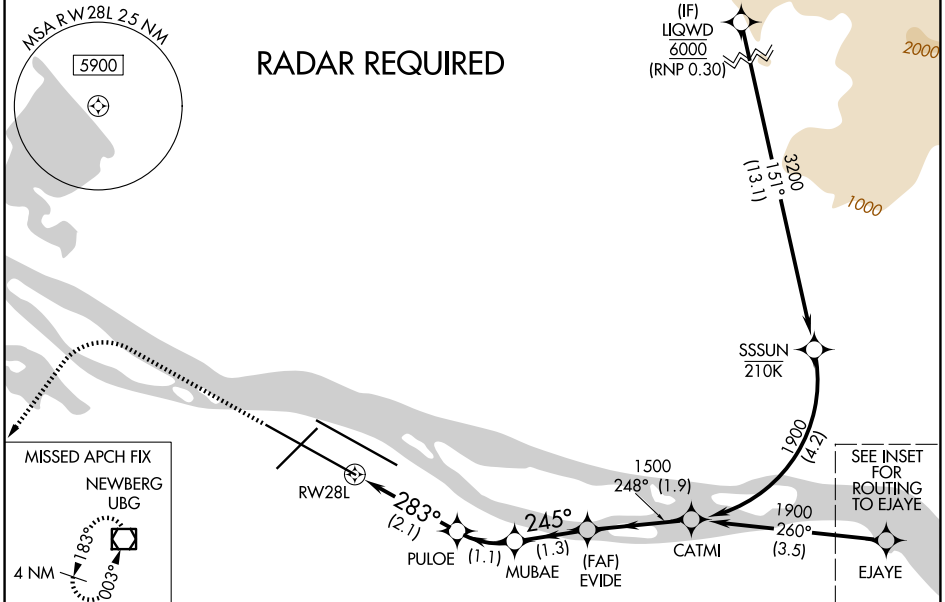
PORTLAND INTL (PDX)

APP CRS	Rwy Ldg <b>11000</b>
<b>283°</b>	TDZE <b>23</b>
	Apt Elev <b>31</b>

▼ For uncompensated Baro-VNAV systems, procedure NA below -7°C (20°F) or above 54°C (130°F). For inop MALS, increase RNP 0.23 all Cats visibility to RVR 5600 and increase RNP 0.30 all Cats visibility to 1½ mile. Simultaneous approach authorized with Rwy 28R. RF required. GPS required. Use of FD or AP providing RNAV track guidance required during simultaneous operations.

**MALS** MISSED APPROACH: Climb to 2100 then climbing left turn to 4000 direct UBG VOR/DME and hold.

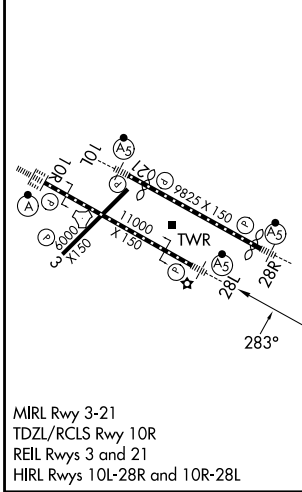
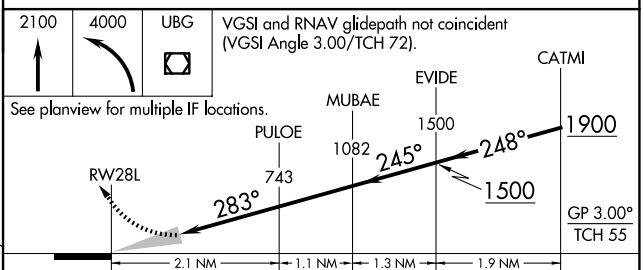
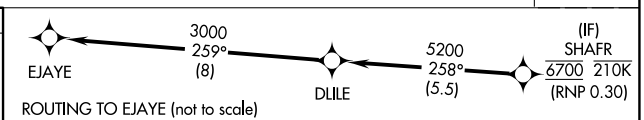
D-ATIS <b>128.35 269.9</b>	PORTLAND APP CON <b>124.35 299.2</b>	PORTLAND TOWER <b>118.7 257.8 (10L-28R)</b> <b>123.775 251.125 (3-21, 10R-28L)</b>	GND CON <b>121.9 348.6</b>
-------------------------------	---	--	-------------------------------



NW-1, 11 JUN 2026 to 09 JUL 2026

NW-1, 11 JUN 2026 to 09 JUL 2026

ELEV 31	<b>D</b>	TDZE 23
---------	----------	---------



MIRL Rwy 3-21  
TDZL/RCLS Rwy 10R  
REIL Rwys 3 and 21  
HIRL Rwys 10L-28R and 10R-28L

CATEGORY	A	B	C	D
RNP 0.23 DA		370/33	347 (400-5/8)	
RNP 0.30 DA		476/53	453 (500-1)	

## AUTHORIZATION REQUIRED

# RNAV (RNP) Y RWY 28L