

RNAV (RNP) Z RWY 10R


PORTLAND INTL (PDX)

APP CRS	Rwy Ldg	11000
103°	TDZE	24
	Apt Elev	31

RNP AR APCH - GPS. Authorization required. From DAYSS, CATUL, or TOWNN: RF.

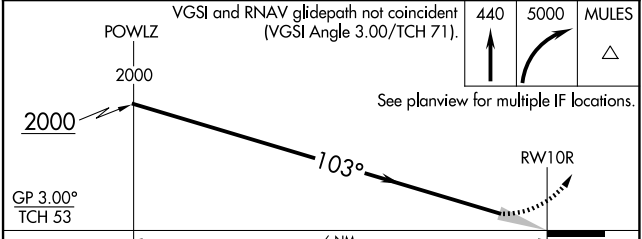
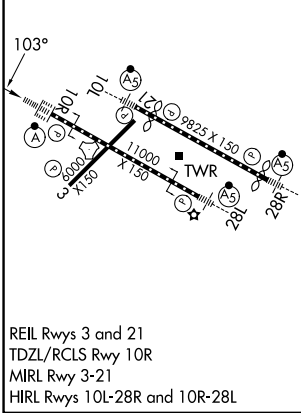
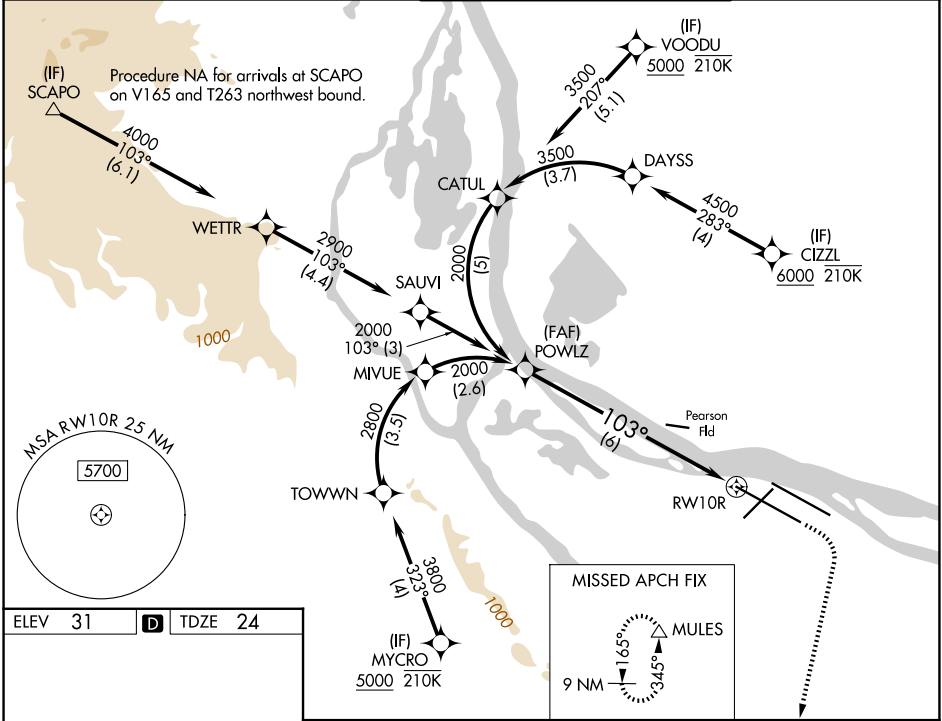
▼ For uncompensated Baro-VNAV systems, procedure NA below -5°C or above 54°C. Simultaneous approach authorized. For inop ALS, increase RNP 0.18 all Cats visibility to RVR 4500, increase RNP 0.30 all Cats visibility to RVR 5500.

ALSF-2



MISSED APPROACH: Climb to 440 then climbing right turn to 5000 direct MULES and hold, continue climb-in-hold to 5000.

D-ATIS 128.35 269.9	PORTLAND APP CON 124.35 299.2	PORTLAND TOWER 118.7 257.8 (10L-28R) 123.775 251.125 (3-21, 10R-28L)	GND CON 121.9 348.6
-------------------------------	---	--	-------------------------------



CATEGORY	A	B	C	D
RNP 0.18 DA		324/24	300 (300-½)	
RNP 0.30 DA		397/35	373 (400-¾)	

AUTHORIZATION REQUIRED

NW-1, 11 JUN 2026 to 09 JUL 2026

NW-1, 11 JUN 2026 to 09 JUL 2026