


APP CRS	Rwy Ldg	11000
283°	TDZE	23
	Apt Elev	31

RNAV (RNP) Z RWY 28L

PORTLAND INTL (PDX)

RNP AR APCH - GPS. Authorization required. From DSHUT: RF.

▼ For uncompensated Baro-VNAV systems, procedure NA below -5°C or above 54°C. Simultaneous approach authorized.

MALSR 

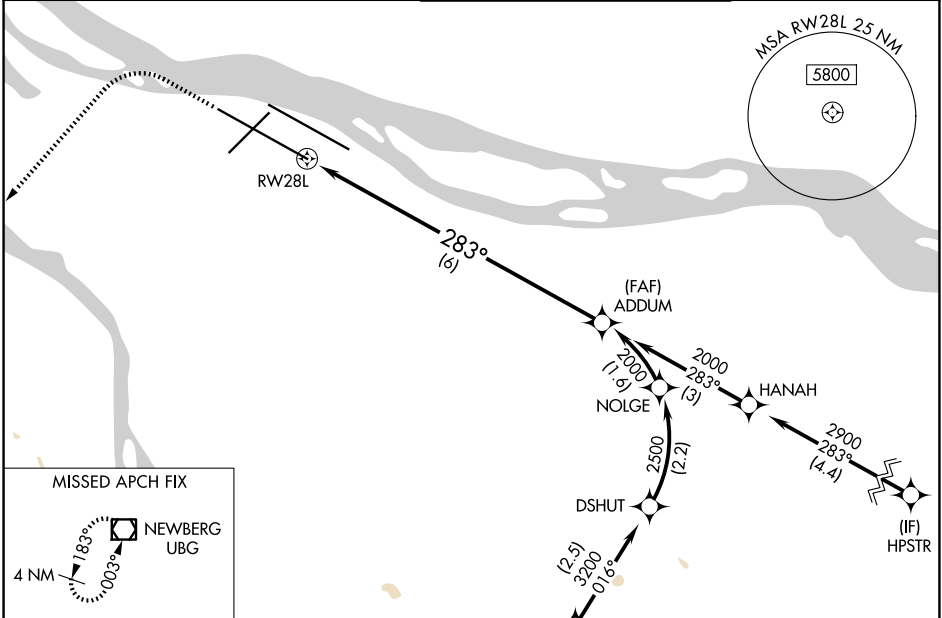
MISSED APPROACH: Climb to 2100 then climbing left turn to 4000 direct UBG VOR/DME and hold.

D-ATIS
128.35 269.9

PORTLAND APP CON
124.35 299.2

PORTLAND TOWER
118.7 257.8 (10L-28R)
123.775 251.125 (3-21, 10R-28L)

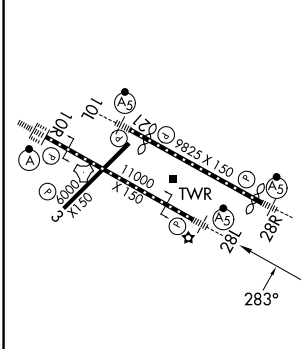
GND CON
121.9 348.6



NW-1, 11 JUN 2026 to 09 JUL 2026

NW-1, 11 JUN 2026 to 09 JUL 2026

ELEV 31	D	TDZE 23
---------	----------	---------



REIL Rwsy 3 and 21
TDZL/RCLS Rwy 10R
MIRL Rwy 3-21
HIRL Rwsy 10L-28R and 10R-28L

2100	4000	UBG	VGSI and RNAV glidepath not coincident (VGSI Angle 3.00/TCH 72).	ADDUM 2000
See planview for multiple IF locations.				
RWY 28L 283°				
GP 3.00° TCH 55'				
6 NM				
CATEGORY	A	B	C	D
RNP 0.30 DA	399/60		376 (400-1¼)	

AUTHORIZATION REQUIRED