

WAAS CH 81804 W10B	APP CRS 103°	Rwy Ldg 8535 TDZE 30 Apt Elev 31
--	------------------------	---

RNAV (GPS) Y RWY 10L

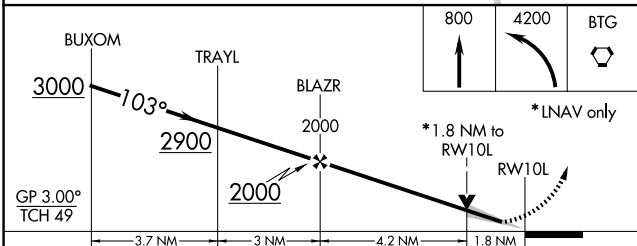
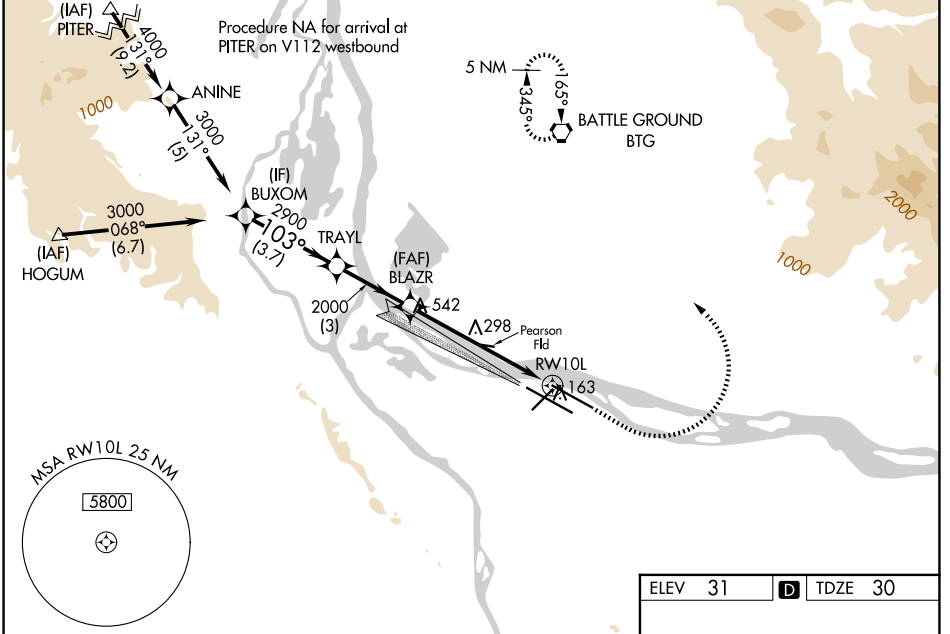
PORTLAND INTL (PDX)

⚠ For uncompensated Baro-VNAV systems, LNAV/VNAV NA below -15°C (5°F) or above 54°C (130°F). DME/DME RNP-0.3 NA. Simultaneous approach authorized with Rwy 10R. Use of FD or AP providing RNAV track guidance required during simultaneous operations. LNAV procedure NA during simultaneous operations. For inoperative MALSR, increase LPV visibility all Cats to RVR 4500. Increase LNAV/VNAV visibility all Cats to 1¼ mile, and LNAV Cat C and D visibility to 1¾ mile.

MALSR
⚠

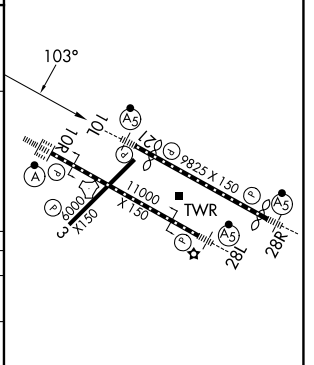
MISSED APPROACH: Climb to 800 then climbing left turn to 4200 direct BTG VORTAC and hold, continue climb-in-hold to 4200.

D-ATIS 128.35 269.9	PORTLAND APP CON 124.35 299.2	PORTLAND TOWER 118.7 257.8 (10L-28R) 123.775 251.125 (3-21, 10R-28L)	GND CON 121.9 348.6
-------------------------------	---	--	-------------------------------



ELEV 31	D TDZE 30
---------	------------------

CATEGORY	A	B	C	D
LPV DA		296/24	266 (300-½)	
LNAV/VNAV DA		413/45	383 (400-¾)	
LNAV MDA	640/24	610 (700-½)	640-1⅜	610 (700-1⅜)
CIRCLING	720-1 689 (700-1)	760-1 729 (800-1)	1060-3	1029 (1100-3)



REIL Rwys 3 and 21
TDZL/RCLS Rwy 10R
MIRL Rwy 3-21
HIRL Rwys 10L-28R and 10R-28L

NW-1, 11 JUN 2026 to 09 JUL 2026

NW-1, 11 JUN 2026 to 09 JUL 2026