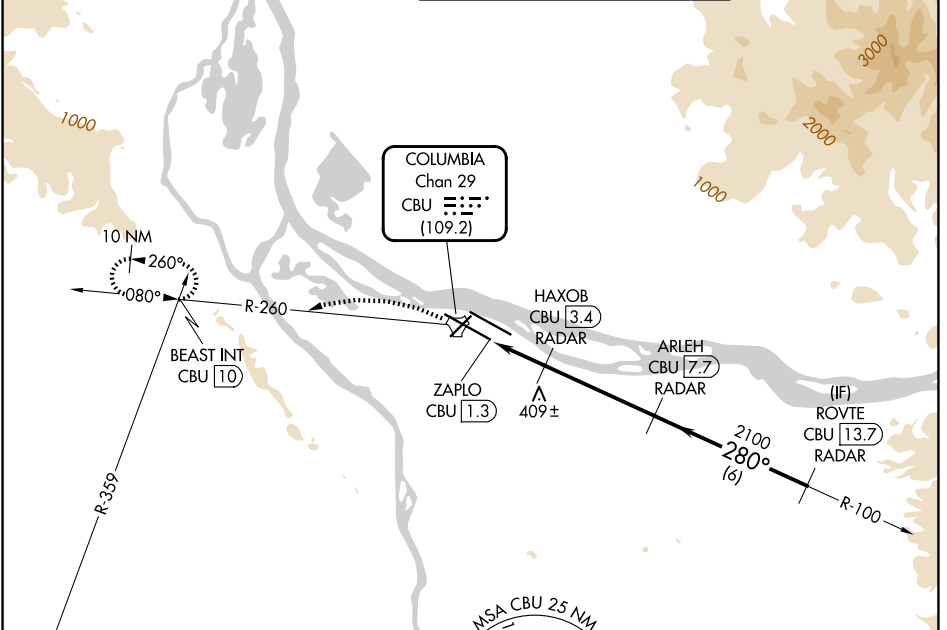


TACAN CBU Chan 29 (109.2)	APP CRS 280°	Rwy Ldg 11000 TDZE 23 Apt Elev 31
---	------------------------	--

TACAN RWY 28L

PORTLAND INTL (PDX)

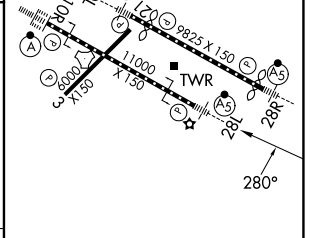
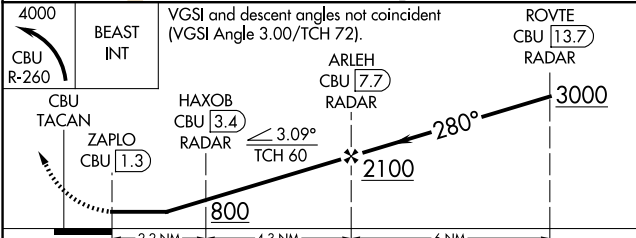
RADAR required for procedure entry.		MALSR 	MISSED APPROACH: Climbing left turn to 4000 on CBU TACAN R-260 to BEAST INT/CBU 10 DME and hold, continue climb-in-hold to 4000.
For inop ALS, increase S-28L Cat C/D/E visibility to 1 3/4 SM.			
D-ATIS 128.35 269.9	PORTLAND APP CON 124.35 299.2	PORTLAND TOWER 118.7 257.8 (10L-28R) 123.775 251.125 (3-21, 10R-28L)	GND CON 121.9 348.6



NW-1, 11 JUN 2026 to 09 JUL 2026

NW-1, 11 JUN 2026 to 09 JUL 2026

ELEV 31	D TDZE 23
---------	------------------



CATEGORY	A	B	C	D	E
S-28L	660/24	637 (700-1/2)	660-1 3/8 637 (700-1 3/8)		
CIRCLING	740-1 709 (800-1)	760-1 729 (800-1)	1060-3	1029 (1100-3)	1140-3 1109 (1200-3)

REIL Rwy 3 and 21
TDZL/RCLS Rwy 10R
MIRL Rwy 3-21
HIRL Rwys 10L-28R and 10R-28L