

# TMBRS FOUR ARRIVAL (RNAV) Transition Routes

AL-330 (FAA)

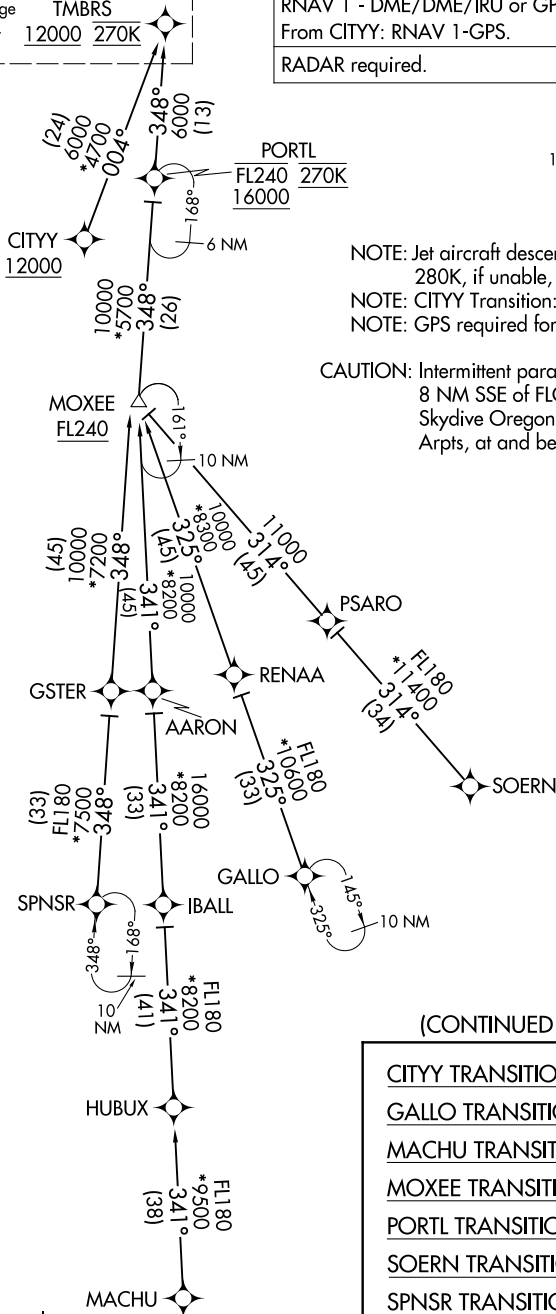
See following page  
for arrival routes.

TMBRS  
12000 270K

RNAV 1 - DME/DME/IRU or GPS.  
From CITYY: RNAV 1-GPS.  
RADAR required.

PORTLAND APP CON  
124.35 299.2  
D-ATIS  
128.35 269.9  
GND CON  
121.9 348.6  
PORTLAND TOWER  
118.7 257.8 (10L-28R)  
123.775 251.125 (3-21, 10R-28L)

EUGENE  
EUG



NOTE: Jet aircraft descend via Mach number until 280K, if unable, advise ATC.  
NOTE: CITYY Transition: ATC assigned only.  
NOTE: GPS required for CITYY Transition.

CAUTION: Intermittent parachuting activity within 8 NM SSE of FLOWR in the vicinity of Skydive Oregon (LØ5) and Mulino (459) Arpts, at and below 17500.

(CONTINUED ON FOLLOWING PAGE)

- CITYY TRANSITION (CITYY.TMBRS4)
- GALLO TRANSITION (GALLO.TMBRS4)
- MACHU TRANSITION (MACHU.TMBRS4)
- MOXEE TRANSITION (MOXEE.TMBRS4)
- PORTL TRANSITION (PORTL.TMBRS4)
- SOERN TRANSITION (SOERN.TMBRS4)
- SPNSR TRANSITION (SPNSR.TMBRS4)

NOTE: Chart not to scale.

# TMBRS FOUR ARRIVAL (RNAV) Transition Routes

(TMBRS.TMBRS4) 26078

# TMBRS FOUR ARRIVAL (RNAV) Arrival Routes

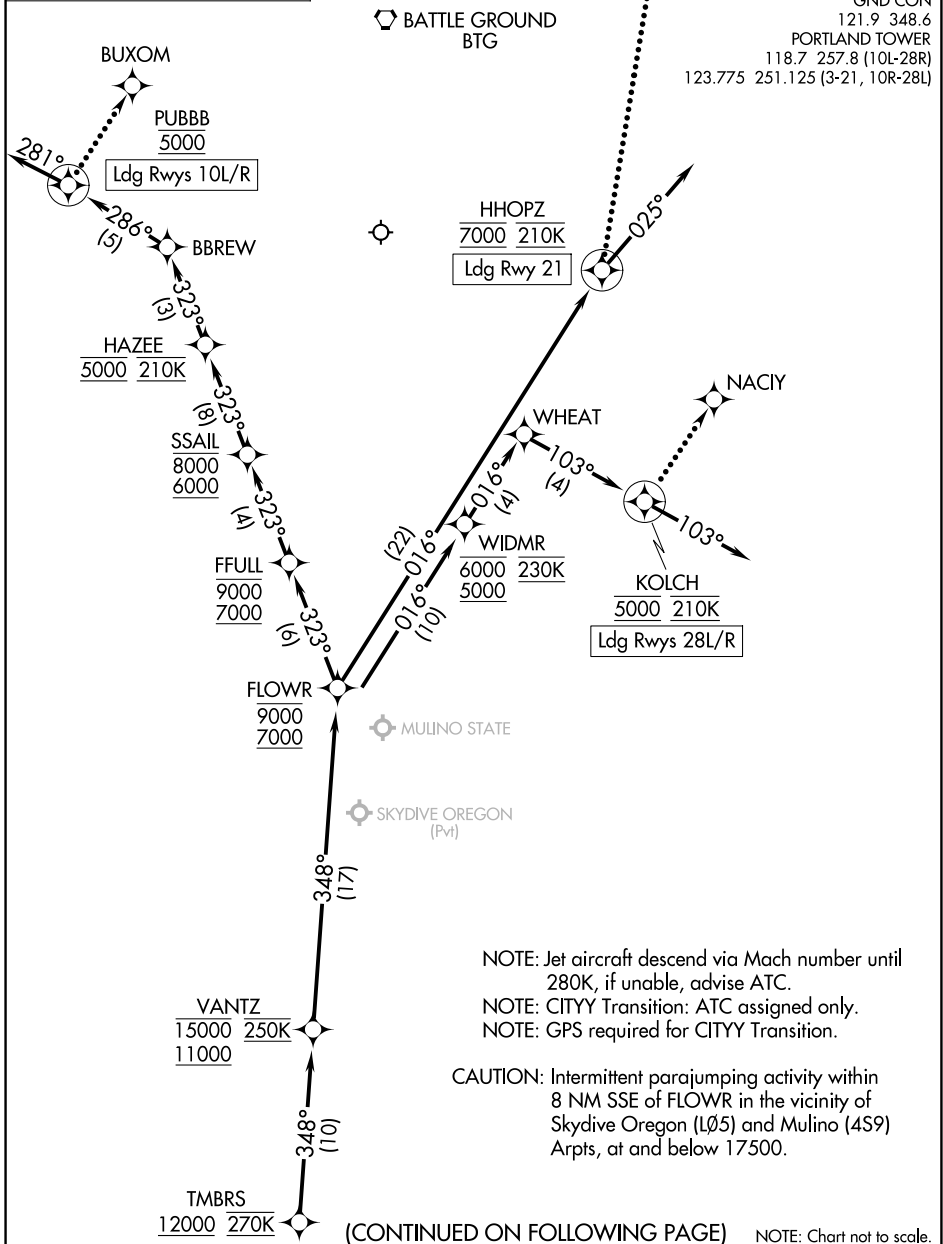
AL-330 (FAA)

PORTLAND INTL (PDX)  
PORTLAND, OREGON

RNAV 1 - DME/DME/IRU or GPS.  
From CITYY: RNAV 1-GPS.

RADAR required.

PORTLAND APP CON  
124.35 299.2  
D-ATIS  
128.35 269.9  
GND CON  
121.9 348.6  
PORTLAND TOWER  
118.7 257.8 (10L-28R)  
123.775 251.125 (3-21, 10R-28L)



NW-1, 11 JUN 2026 to 09 JUL 2026

NW-1, 11 JUN 2026 to 09 JUL 2026

NOTE: Jet aircraft descend via Mach number until 280K, if unable, advise ATC.  
NOTE: CITYY Transition: ATC assigned only.  
NOTE: GPS required for CITYY Transition.

CAUTION: Intermittent parajumping activity within 8 NM SSE of FLOWR in the vicinity of Skydive Oregon (LØ5) and Mulino (459) Arpts, at and below 17500.

(CONTINUED ON FOLLOWING PAGE) NOTE: Chart not to scale.

# TMBRS FOUR ARRIVAL (RNAV) Arrival Routes

(TMBRS.TMBRS4) 19MAR26

PORTLAND, OREGON  
PORTLAND INTL (PDX)

ARRIVAL ROUTE DESCRIPTION

From TMBRS on track 348° to cross VANTZ between 11000 and 15000 and at 250K, then on track 348° to cross FLOWR between 7000 and 9000.

LANDING RUNWAYS 10L/R: From FLOWR on track 323° to cross FFULL between 7000 and 9000, then on track 323° to cross SSAIL between 6000 and 8000, then on track 323° to cross HAZEE at 5000 and at 210K, then on track 323° to BBREW, then on track 286° to cross PUBBB at 5000, then on track 281°. Expect RADAR vectors to final approach course.

LANDING RUNWAY 21: From FLOWR on track 016° to cross HHOPZ at 7000 and at 210K, then on track 025°. Expect RADAR vectors to final approach course.

LANDING RUNWAYS 28L/R: From FLOWR on track 016° to cross WIDMR between 5000 and 6000 and at 230K, then on track 016° to WHEAT, then on track 103° to cross KOLCH at 5000 and at 210K, then on track 103°. Expect RADAR vectors to final approach course.

LOST COMMUNICATIONS

Follow published crossing altitudes and then maintain lowest rwy transition altitude until established on approach procedure.

RUNWAYS 10L/R: After PUBBB, turn right to BUXOM and proceed on the ILS or LOC RWY 10L approach.

RUNWAY 21: After HHOPZ, turn left to CREAK and proceed on the LOC/DME RWY 21 approach.

RUNWAYS 28L/R: After KOLCH, turn left to NACIY and proceed on the ILS or LOC RWY 28R approach.

NW-1, 11 JUN 2026 to 09 JUL 2026

NW-1, 11 JUN 2026 to 09 JUL 2026