

WAAS CH 53514 W11A	APP CRS 108°	Rwy Ldg TDZE Apt Elev	7006 3068 3082
--	------------------------	-----------------------------	---

RNAV (GPS) RWY 11

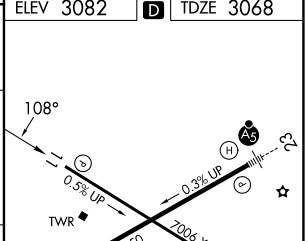
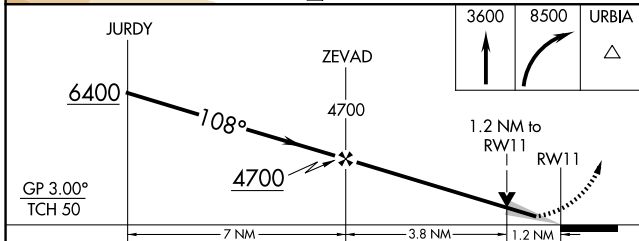
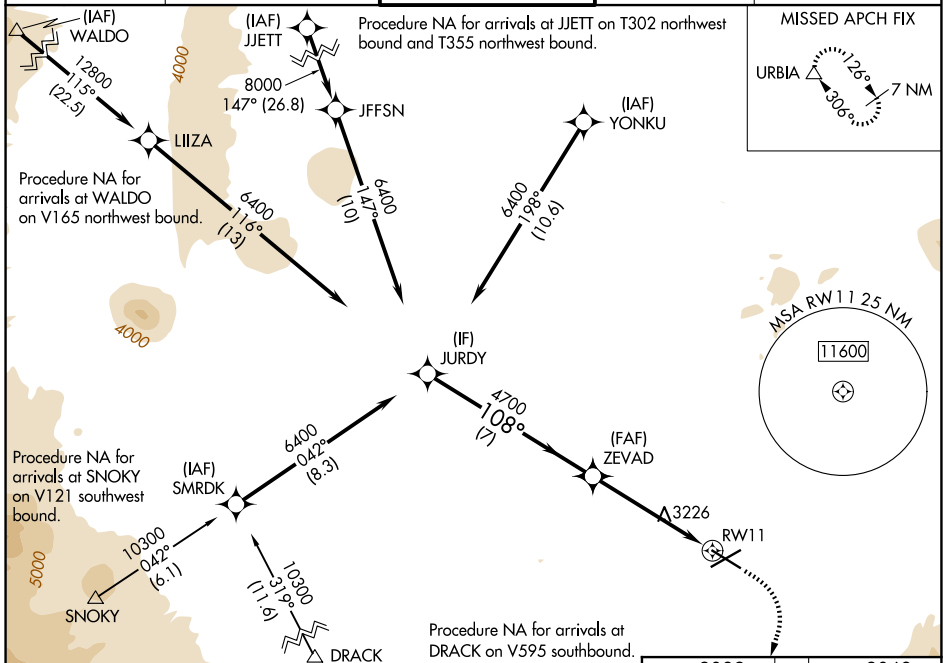
ROBERTS FLD (RDM)

RNP APCH - GPS.

For uncompensated Baro-VNAV systems, LNAV/VNAV NA below -16°C or above 54°C. Baro-VNAV and VDP NA when using BDN altimeter setting. When local altimeter setting not received, use BDN altimeter setting and increase LPV DA to 3349 feet and all visibilities 1/8 SM. Increase LNAV/VNAV DA to 3451 feet and all visibilities 1/4 SM. Increase all MDAs 100 feet and LNAV visibility Cat C/D 1/4 SM, and Circling visibility Cat C/D 1/4 SM.

MISSED APPROACH: Climb to 3600 then climbing right turn to 8500 direct URBIA and hold, continue climb-in-hold to 8500.

ATIS 119.025	SEATTLE CENTER 126.15 269.475	REDMOND TOWER★ 124.5 (CTAF) 256.8	GND CON 121.8	UNICOM 122.95
------------------------	---	---	-------------------------	-------------------------



CATEGORY	A	B	C	D
LPV DA		3268-3/4	200 (200-3/4)	
LNAV/VNAV DA		3370-7/8	302 (300-7/8)	
LNAV MDA	3480-1	412 (400-1)	3480-1 1/8	412 (400-1 1/8)
CIRCLING	3540-1 458 (500-1)	3560-1 478 (500-1)	3640-1 1/2 558 (600-1 1/2)	3760-2 1/4 678 (700-2 1/4)

REIL Rwy 5, 11, and 29

HIRL Rwy 5-23

MIRL Rwy 11-29

NW-1, 11 JUN 2026 to 09 JUL 2026

NW-1, 11 JUN 2026 to 09 JUL 2026