

APP CRS <b>046°</b>	Rwy Ldg TDZE Apt Elev	<b>7038</b> <b>3075</b> <b>3082</b>
------------------------	-----------------------------	---

# RNAV (RNP) Z RWY 5

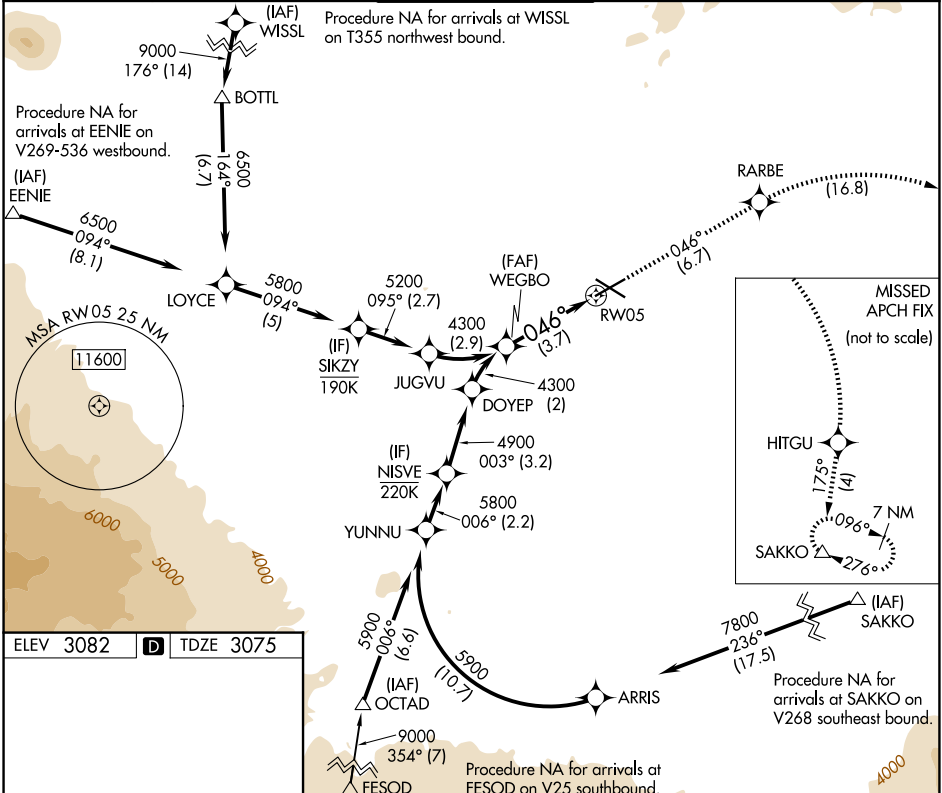
ROBERTS FLD (RDM)

RNP AR APCH - GPS, RF. Authorization required. From JUGVU: min RNP 0.70, from DOYEP: min RNP 0.80.

**⚠** For uncompensated Baro-VNAV systems, procedure NA below -16°C or above 54°C.

MISSED APPROACH: Climb to 7800 on track 046° to RARBE and right turn to HITGU and on track 175° to SAKKO and hold.

ATIS <b>119.025</b>	SEATTLE CENTER <b>126.15 269.475</b>	REDMOND TOWER★ <b>124.5 (CTAF) 256.8</b>	GND CON <b>121.8</b>	UNICOM <b>122.95</b>
------------------------	---	---	-------------------------	-------------------------



ELEV 3082 **D** TDZE 3075

REL Rwy 5, 11, and 29 **⬇**

HIRL Rwy 5-23 **⬇**

MIRL Rwy 11-29 **⬇**

WEGBO 4300	↑ 800 tr 046°	RARBE ⬠	HITGU ⬠	SAKKO △
See planview for multiple IF locations.				
GP 3.00° TCH 50	3.7 NM			
CATEGORY	A	B	C	D
RNP 0.10 DA	3368-7 <sup>8</sup> / <sub>8</sub> 293 (300- <sup>7</sup> / <sub>8</sub> )			
RNP 0.30 DA	3574-1 <sup>3</sup> / <sub>8</sub> 499 (500-1 <sup>3</sup> / <sub>8</sub> )			
<b>AUTHORIZATION REQUIRED</b>				

NW-1, 11 JUN 2026 to 09 JUL 2026

NW-1, 11 JUN 2026 to 09 JUL 2026