

APP CRS	Rwy Ldg	7006
288°	TDZE	3080
	Apt Elev	3080

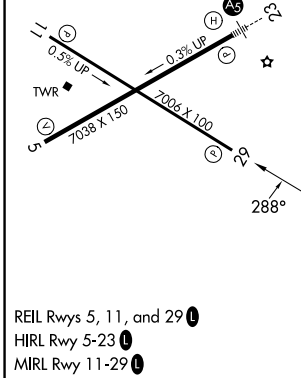
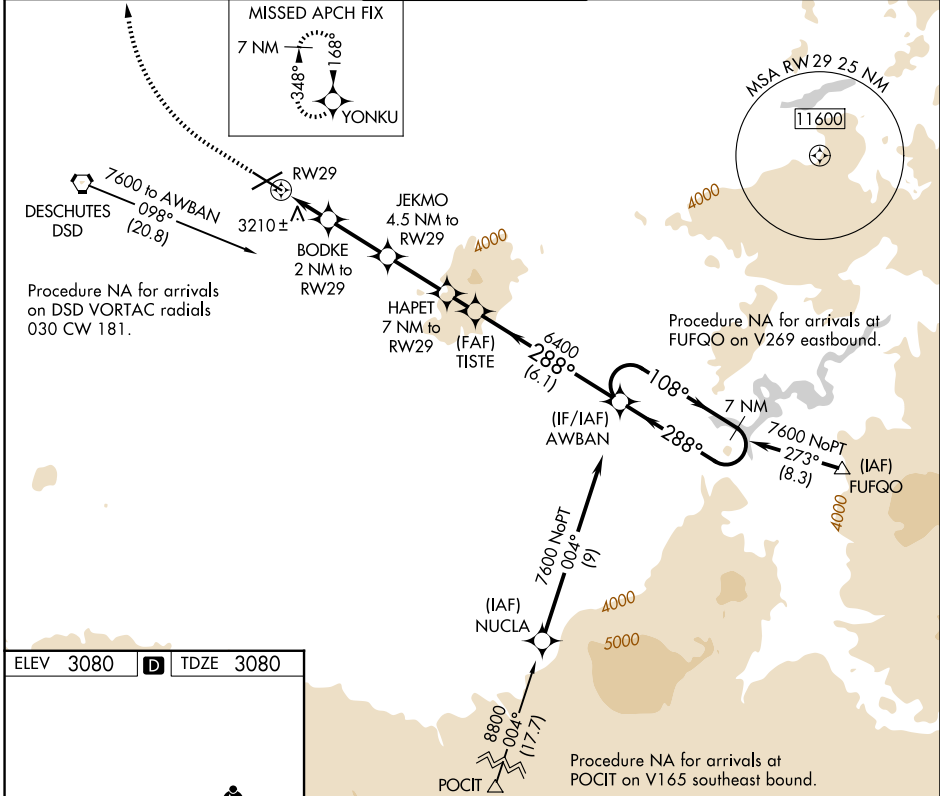
RNAV (GPS) Y RWY 29

ROBERTS FLD (RDM)

RNP APCH.
3 -1.6°C

MISSED APPROACH: Climb to 4000 then climbing right turn to 7000 direct YONKU and hold, continue climb-in-hold to 7000.

ATIS 119.025	SEATTLE CENTER 126.15 269.475	REDMOND TOWER ★ 124.5 (CTAF) 256.8	GND CON 121.8	UNICOM 122.95
------------------------	---	--	-------------------------	-------------------------



4000	7000	YONKU	HAPET 7 NM to RW29	TISTE	AWBAN 7 NM Holding Pattern
		BODKE 2 NM to RW29	JEKMO 4.5 NM to RW29	3.76° TCH 43	108° → 7600
		1.3 NM to RW29		5920	← 288°
		3900	4900	6400	288°
		1.3 NM	0.7	2.5 NM	2.5 NM
		1.2 NM	6.1 NM		
CATEGORY	A	B	C	D	
LNAV MDA	3560-1	480 (500-1)	3560-1 3/8 480 (500-1 3/8)	NA	
CIRCLING	3560-1	480 (500-1)	3640-1 1/2 560 (600-1 1/2)	NA	

VGSI and descent angles not coincident (VGSI Angle 3.00/TCH 50)

NW-1, 11 JUN 2026 to 09 JUL 2026

NW-1, 11 JUN 2026 to 09 JUL 2026