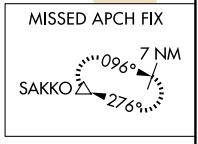
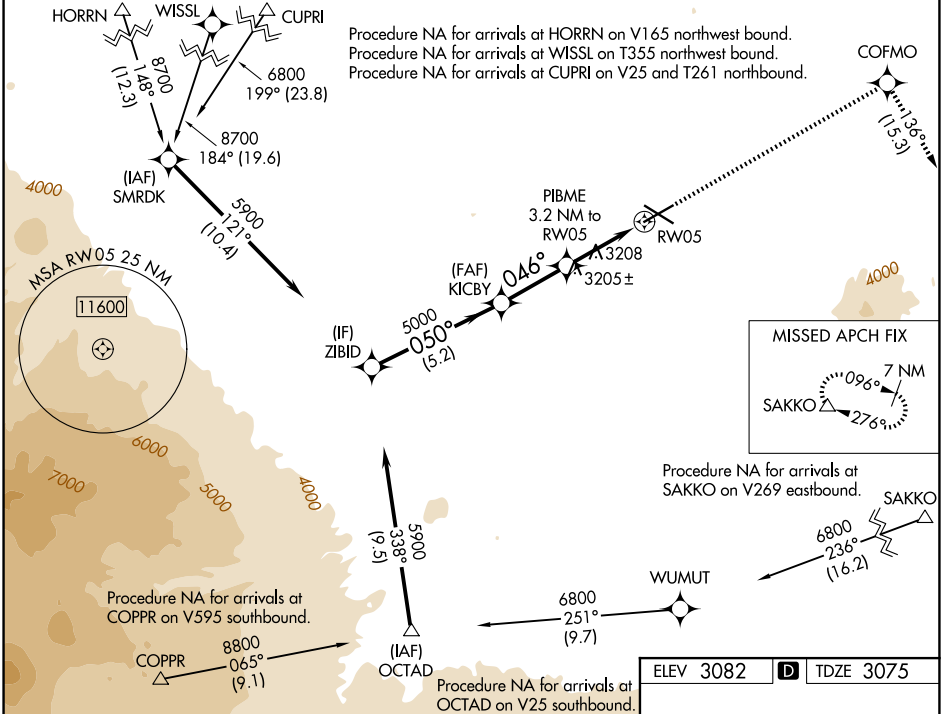


WAAS CH <b>70514</b> <b>W05A</b>	APP CRS <b>046°</b>	Rwy Ldg TDZE Apt Elev	<b>7038</b> <b>3075</b> <b>3082</b>
--	------------------------	-----------------------------	---

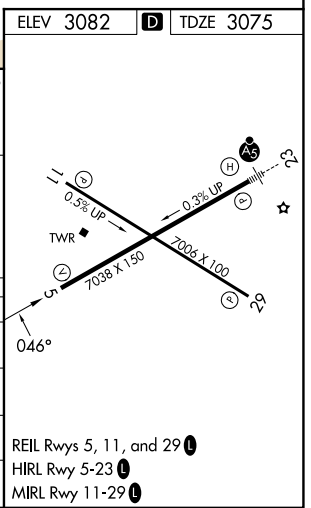
# RNAV (GPS) Y RWY 5

ROBERTS FLD (RDM)

RNP APCH.		MISSED APPROACH: Climb to 9500 direct COFMO and on track 136° to SAKKO and hold, continue climb-in-hold to 9500.		
<p>For uncompensated Baro-VNAV systems, LNAV/VNAV NA below -22°C or above 54°C.</p>				
ATIS <b>119.025</b>	SEATTLE CENTER <b>126.15 269.475</b>	REDMOND TOWER* <b>124.5 (CTAF) 0 256.8</b>	GND CON <b>121.8</b>	UNICOM <b>122.95</b>



ZIBID	KICBY	9500	COFMO	tr 136°	SAKKO
5900	5000	3388			
GP 3.00°		3.2 NM to RW05	*1.2 NM to RW05		*LNAV only
TCH 50		5.2 NM	2.7 NM	2 NM	1.2 NM
CATEGORY	A	B	C	D	
LPV DA		3275-3/4	200 (200-3/4)		
LNAV/VNAV DA		3347-7/8	272 (300-7/8)		
LNAV MDA	3520-1	445 (500-1)	3520-1 3/8	445 (500-1 3/8)	
CIRCLING	3540-1 458 (500-1)	3560-1 478 (500-1)	3640-1 1/2 558 (600-1 1/2)	3740-2 658 (700-2)	



NW-1, 11 JUN 2026 to 09 JUL 2026

NW-1, 11 JUN 2026 to 09 JUL 2026