

RIVERSIDE, CALIFORNIA

RNAV (GPS) RWY 14

WAAS CH 91363 W14A	APCH CRS 135°	Rwy ldg TDZE 1330Z Arprt Elev 1536
---------------------------------	-------------------------	--

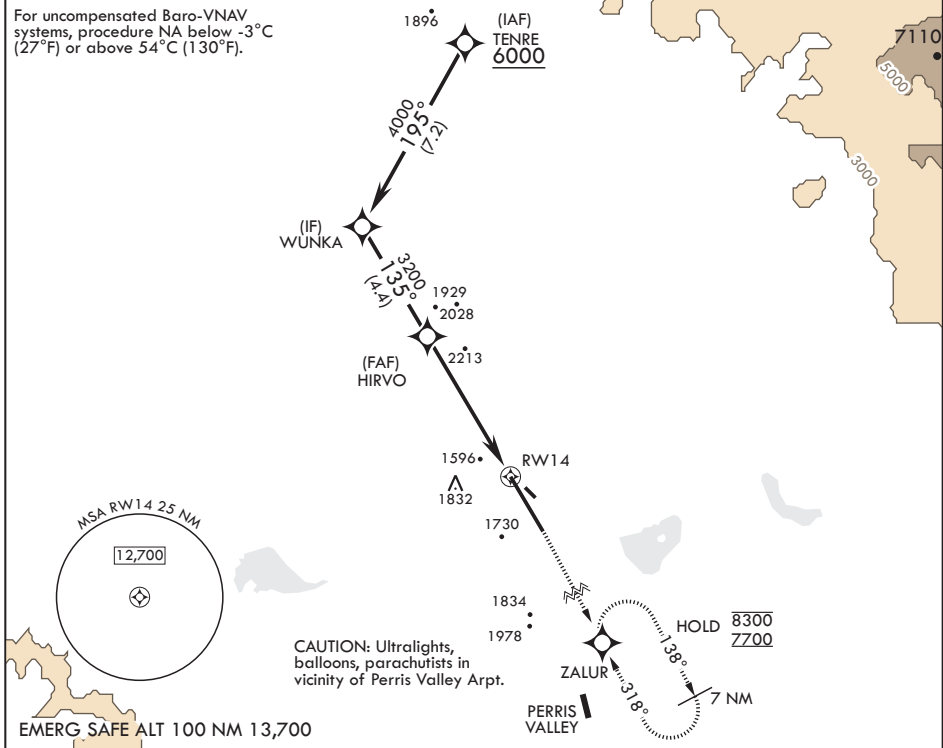
AL-348 (USAF)

MARCH ARB (KRIV)

RNP APCH
▽ * Circling NA NE of Rwy 14-32. Rapid rising terrain.
 MISSED APPROACH: Climb to 2300 then climbing right turn direct ZALUR and hold, continue climb in hold to 7700.

ATIS 134.75 239.05	APP CON/DEP CON* 133.5 306.975	TOWER 127.65 253.5	GND CON 121.75 335.8	CLNC DEL 127.775 268.7
------------------------------	--	------------------------------	--------------------------------	----------------------------------

For uncompensated Baro-VNAV systems, procedure NA below -3°C (27°F) or above 54°C (130°F).



TENRE 6000	↑ 2300	↻ 7700	ZALUR ELEV 1536	TDZE 1536
GP 2.70° TCH 56	↑	↻	↻	
6000	195°	WUNKA	4000	135°
		HIRVO	3200	
		2.8 NM to RWY 14		
		5.6 NM		
CATEGORY	A	B	C	D
LPV DA	1756/40	220	(300-¾)	
LNAV/VNAV DA	2080-1⅝	544	(600-1⅝)	
LNAV MDA	2380/55 844 (900-1)	2380-1¼ 844 (900-1¼)	2380-2½ 844 (900-2½)	2440-3 904 (1000-3)
C CIRCLING*	2380-1¼ 844 (900-1¼)	844 (900-1¼)	2380-2½ 844 (900-2½)	2440-3 904 (1000-3)

RIVERSIDE, CALIFORNIA
 Amdt 7 24MAR22
 TERPS

33°53'N - 117°16'W

MARCH ARB (KRIV)

RNAV (GPS) RWY 14

SW-3, 11 JUN 2026 to 09 JUL 2026

SW-3, 11 JUN 2026 to 09 JUL 2026