

9202 701 60 01 9202 2011 11 '8-MS

**DEPARTURE ROUTE DESCRIPTION**

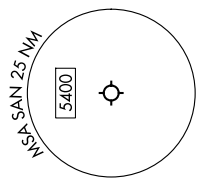
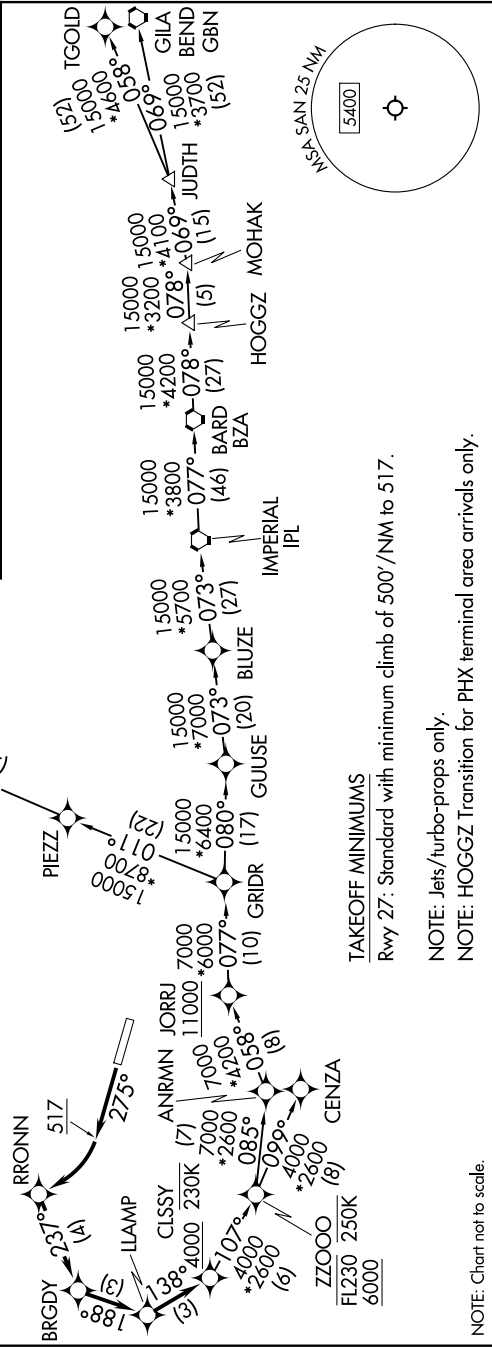
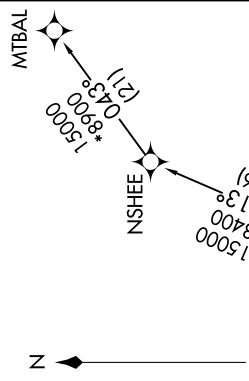
**TAKEOFF RUNWAY 27:** Climb on heading 275° to 517, then climbing right turn direct RRONN, then on depicted route to cross CLSSY at or above 4000 and at or below 230K, then on transition. Jets maintain FL230, turbo-props maintain 15000, expect filed altitude 10 minutes after departure.

CENZA TRANSITION (CLSSY3.CENZA)  
GILA BEND TRANSITION (CLSSY3.GBN)  
HOGGZ TRANSITION (CLSSY3.HOGGZ)  
MTBAL TRANSITION (CLSSY3.MTBAL)  
TGOLD TRANSITION (CLSSY3.TGOLD)

RNAV 1 - DME/DME/IRU or GPS.  
 RADAR required for non-GPS equipped aircraft.

SOCAL DEP CON  
 119.6 363.1  
 D-AIS  
 134.8  
 CLNC DEL  
 125.9  
 GND CON  
 123.9  
 LINDBERGH TOWER  
 118.3 338.225

**TOP ALTITUDE:  
 (JETS) FL230/  
 (TURBOPROPS) 15000**



**TAKEOFF MINIMUMS**  
 Rwy 27: Standard with minimum climb of 500'/NM to 517.

NOTE: Jets/turbo-props only.  
 NOTE: HOGGZ Transition for PHX terminal area arrivals only.