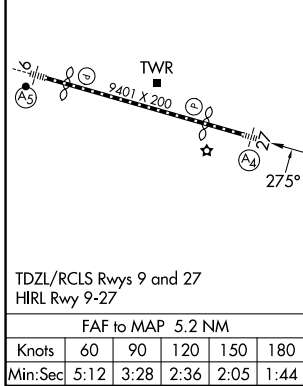
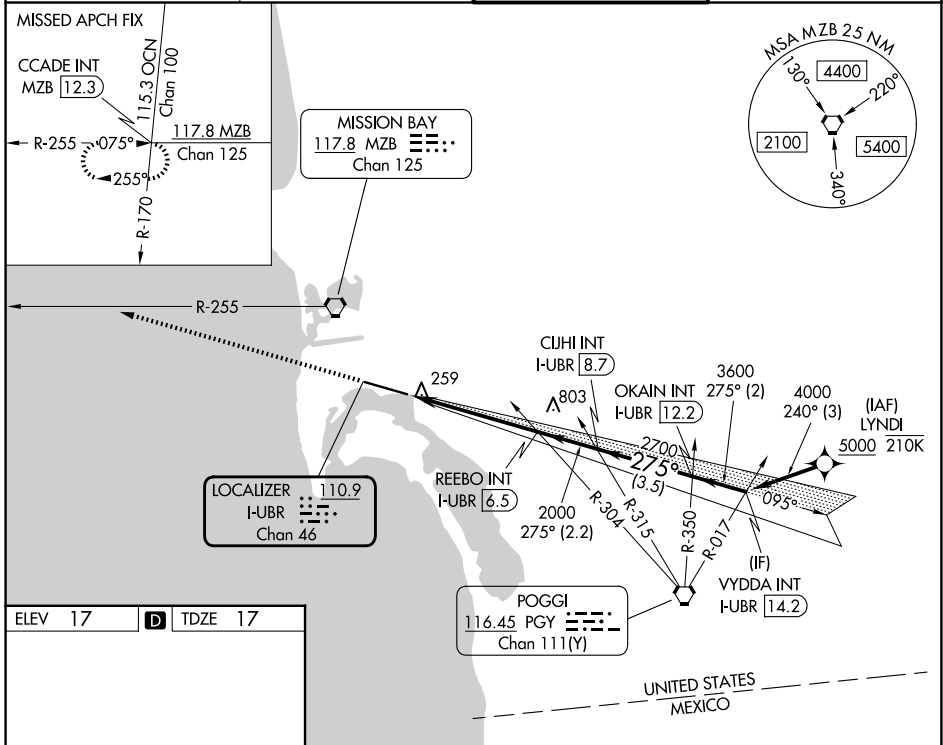


| | | |
|---|------------------------|--|
| LOC/DME I-UBR 110.9 Chan 46 | APP CRS 275° | Rwy Ldg TDZE Apt Elev 7591 17 17 |
|---|------------------------|--|

LOC RWY 27

SAN DIEGO INTL (SAN)

| | | | |
|--|--|---|---|
| From LYNDI: RNAV 1-DME/DME/IRU or GPS required. | | MAIS ④ | MISSED APPROACH: Climb to 2500 on heading 275° and on MZB VORTAC R-255 to CCADE INT/ MZB 12.3 DME and hold. |
| RNAV 1-DME/DME/IRU or GPS required for procedure entry. | | | |
| <p>▼ Rwy 27 helicopter visibility reduction below 1 SM NA. Circling NA north of Rwy 9-27. Inop table does not apply to Cats A and B. For inop ALS, increase S-27 Cats C and D visibility to 1 1/8 SM.</p> | | | |
| D-ATIS 134.8 | SOCAL APP CON 119.6 363.1 (W) 124.35 279.625 (E) | LINDBERGH TOWER 118.3 338,225 | GND CON 123.9 |



| | | | | | |
|--|--------------------------|----------------------|-----------------|-----------------|------|
| ELEV 17 | D | TDZE 17 | | | |
| <p>2500 ↑ hdg 275°</p> | | | | | |
| MZB R-255 | CCADE INT | VYDDA INT I-UBR 14.2 | | | |
| I-UBR 1.3 | REEBO INT I-UBR 6.5 | OKAIN INT I-UBR 12.2 | | | |
| 2000 | 2700 | 3600 | | | |
| 5.2 NM | 2.2 NM | 3.5 NM | | | |
| 2 NM | | | | | |
| TDZL/RCLS Rwys 9 and 27 HIRL Rwy 9-27 | <p>FAF to MAP 5.2 NM</p> | | | | |
| Knots | 60 | 90 | 120 | 150 | 180 |
| Min:Sec | 5:12 | 3:28 | 2:36 | 2:05 | 1:44 |
| CATEGORY | A | B | C | D | |
| S-27 | 680-1 | 663 (700-1) | 680-1 3/4 | 663 (700-1 1/4) | |
| CIRCLING | 820-1 | 803 (900-1) | 840-2 1/2 | 940-3 | |
| | | | 823 (900-2 1/2) | 923 (1000-3) | |

SW-3, 11 JUN 2026 to 09 JUL 2026

SW-3, 11 JUN 2026 to 09 JUL 2026