

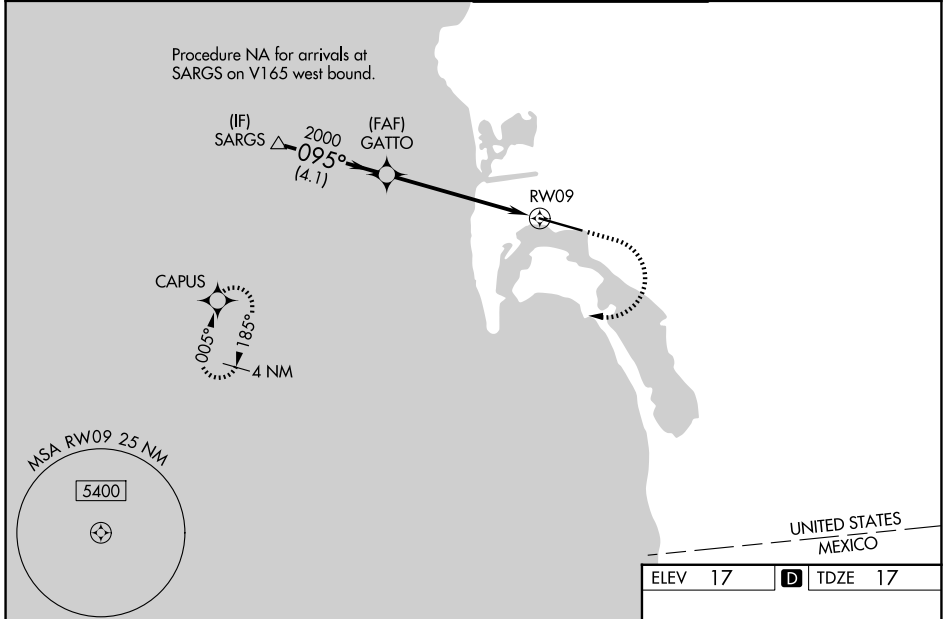
WAAS CH 49237 W09A	APP CRS 095°	Rwy Ldg 7280 TDZE 17 Apt Elev 17
--	------------------------	---

RNAV (GPS) RWY 9

SAN DIEGO INTL (SAN)

RNP APCH.	<p>⚠ Circling NA north of Rwy 9-27. For uncompensated Baro-VNAV systems, LNAV/VNAV NA below 6°C or above 47°C. When Circling to Rwy 27 at night, operational VGSI required, remain on or above VGSI glidepath until threshold. Rwy 9 helicopter visibility reduction below RVR 4000 NA. Inop table does not apply to LPV all Cats. For inop ALS, increase LNAV Cats A/B visibility to RVR 5500.</p>	MALSR 	MISSED APPROACH: Climb to 2000 then climbing right turn to 3000 direct CAPUS and hold.

D-ATIS 134.8	SOCAL APP CON 119.6 363.1 (W) 124.35 279.625 (E)	LINDBERGH TOWER 118.3 338.225	GND CON 123.9
------------------------	--	---	-------------------------



VGSI and RNAV glidepath not coincident (VGSI Angle 3.30/TCH 76).		2000 \uparrow	3000 \curvearrowright	CAPUS \blacklozenge	ELEV 17 D TDZE 17
SARGS \triangle 2100 \rightarrow 095° \rightarrow GATTO \blacklozenge 2000 \rightarrow RWY9 \odot		*1.6 NM to RWY9		*LNAV only.	TWR \blacksquare 9401 X 200
GP 3.10° TCH 55	4.1 NM	4.3 NM	1.6 NM	RWY9 \odot	TDZL/RCLS Rwy 9 and 27 HIRL Rwy 9-27
CATEGORY	A	B	C	D	
LPV DA		262/40	245 (300-¾)		
LNAV/VNAV DA		621-1½	604 (700-1½)		
LNAV MDA	600/40	583 (600-¾)	600-1¼	583 (600-1¼)	
CIRCLING	800-1 783 (800-1)	820-1 803 (900-1)	820-2¼ 803 (900-2¼)	940-3 923 (1000-3)	

SW-3, 11 JUN 2026 to 09 JUL 2026

SW-3, 11 JUN 2026 to 09 JUL 2026