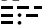



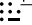
SOCAL APP CON
 119.6 363.1
 D-ATIS
 134.8

LOS ANGELES
 113.6 LAX 
 Chan 83

**VERTICAL NAVIGATION
 PLANNING INFORMATION**
 Expect FL270

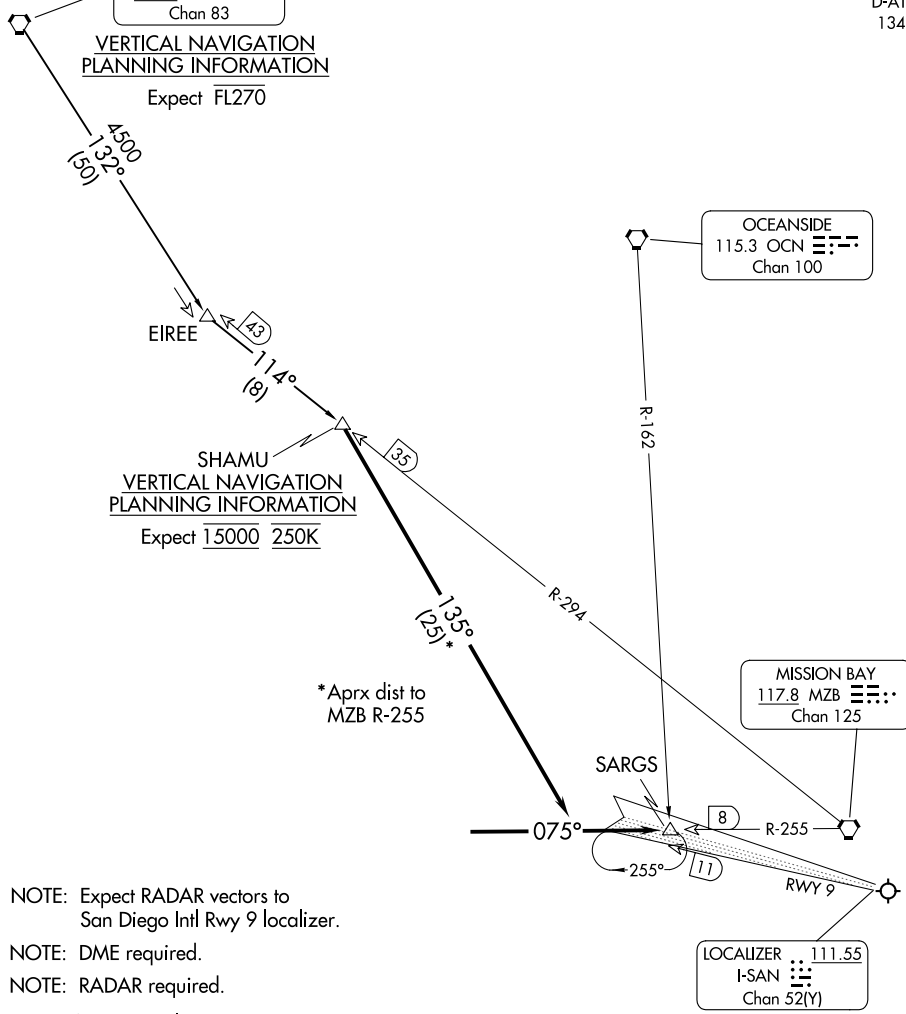
OCEANSIDE
 115.3 OCN 
 Chan 100

MISSION BAY
 117.8 MZB 
 Chan 125

LOCALIZER
 111.55
 I-SAN 
 Chan 52(Y)

SHAMU
**VERTICAL NAVIGATION
 PLANNING INFORMATION**
 Expect 15000 250K

* Aprx dist to
 MZB R-255



NOTE: Expect RADAR vectors to San Diego Intl Rwy 9 localizer.

NOTE: DME required.

NOTE: RADAR required.

NOTE: Chart not to scale.

ARRIVAL ROUTE DESCRIPTION

LOS ANGELES TRANSITION (LAX.SHAMU1): From over LAX VORTAC via LAX R-132 and MZB R-294 to SHAMU FIX. Thence. . .

. . . From over SHAMU FIX via heading 135° to intercept MZB R-255 then via MZB R-255 to SARGS INT. Expect RADAR vectors to SAN Rwy 9 localizer.

SW-3, 11 JUN 2026 to 09 JUL 2026

SW-3, 11 JUN 2026 to 09 JUL 2026