

ATIS ★
 317.8
 CLNC DEL
 128.4 288.25
 GND CON
 118.0 360.675
 NORTH ISLAND TOWER ★
 135.1 336.4
 SOCAL DEP CON
 125.15 317.55

RADAR and DME required

Rwy	Knots	60	120	180	240	300	360
11 (A)	V/V(fpm)	275	550	825	1100	1375	1650
11 (B)	V/V(fpm)	290	580	870	1160	1450	1740
29 (C)	V/V(fpm)	420	840	1260	1680	2100	2520
29 (D)	V/V(fpm)	470	940	1410	1880	2350	2820

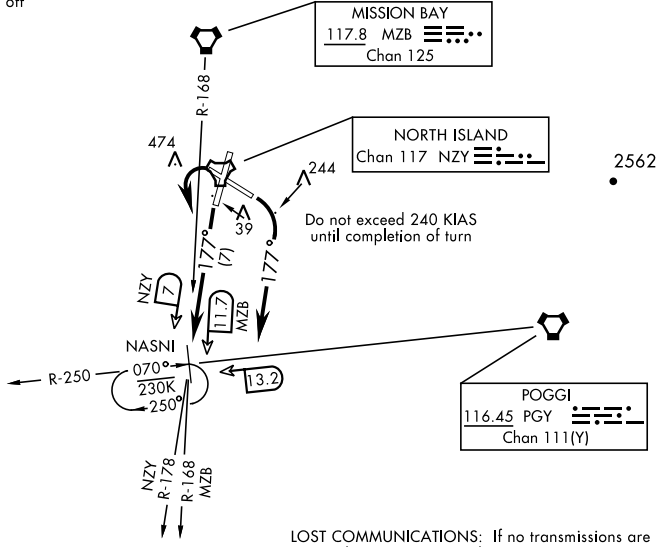
Minimum Climb Rate

- (A) Military climb to 700 or 600-2 1/4 authorized in lieu of climb rate.
- (B) Civil climb to 700 or 600-2 1/4 authorized in lieu of climb rate.
- (C) Military climb to 700 or 600-2 1/2 authorized in lieu of climb rate.
- (D) Civil climb to 700 or 600-2 1/2 authorized in lieu of climb rate.

CAUTION: Rwy 29 Cross DER at or above 35'

CAT E aircraft not authorized off
 Rwy 11 and 29

Rwy 29 CIVIL departure
 dual DME required



Advise ATC prior to taxi if unable to meet climb gradients, DER crossing restrictions or remain within turn restrictions of published departure for an alternate runway assignment.

LOST COMMUNICATIONS: If no transmissions are received prior to crossing the PGY VORTAC R-250 Southbound, turn direct on PGY R-250 to NASNI and hold as published, if no transmissions received within five minutes after entering holding, proceed on course, climb to filed altitude.

SW-3, 11 JUN 2026 to 09 JUL 2026

SW-3, 11 JUN 2026 to 09 JUL 2026

DEPARTURE ROUTE DESCRIPTION

TAKEOFF RWY 11: Turn right as soon as practicable climbing to 2000 via heading 177°, remain within NZY TACAN 1.4 DME to not overfly the City of Coronado, thence...

TAKEOFF RWY 18: Climbing left turn to 2000 intercept the NZY TACAN R-178 (MZB VORTAC R-168) to NASNI, thence...

TAKEOFF RWY 29 (CIVIL): Turn left as soon as practicable climbing to 2000, remain within NZY TACAN 1 DME to not overfly Point Loma, intercept the MZB VORTAC R-168 to NASNI, thence...

TAKEOFF RWY 29 (MILITARY): Turn left as soon as practicable climbing to 2000, remain within NZY TACAN 1 DME to not overfly Point Loma, intercept the NZY R-178 to NASNI, thence...

...Expect RADAR vectors to join assigned route.