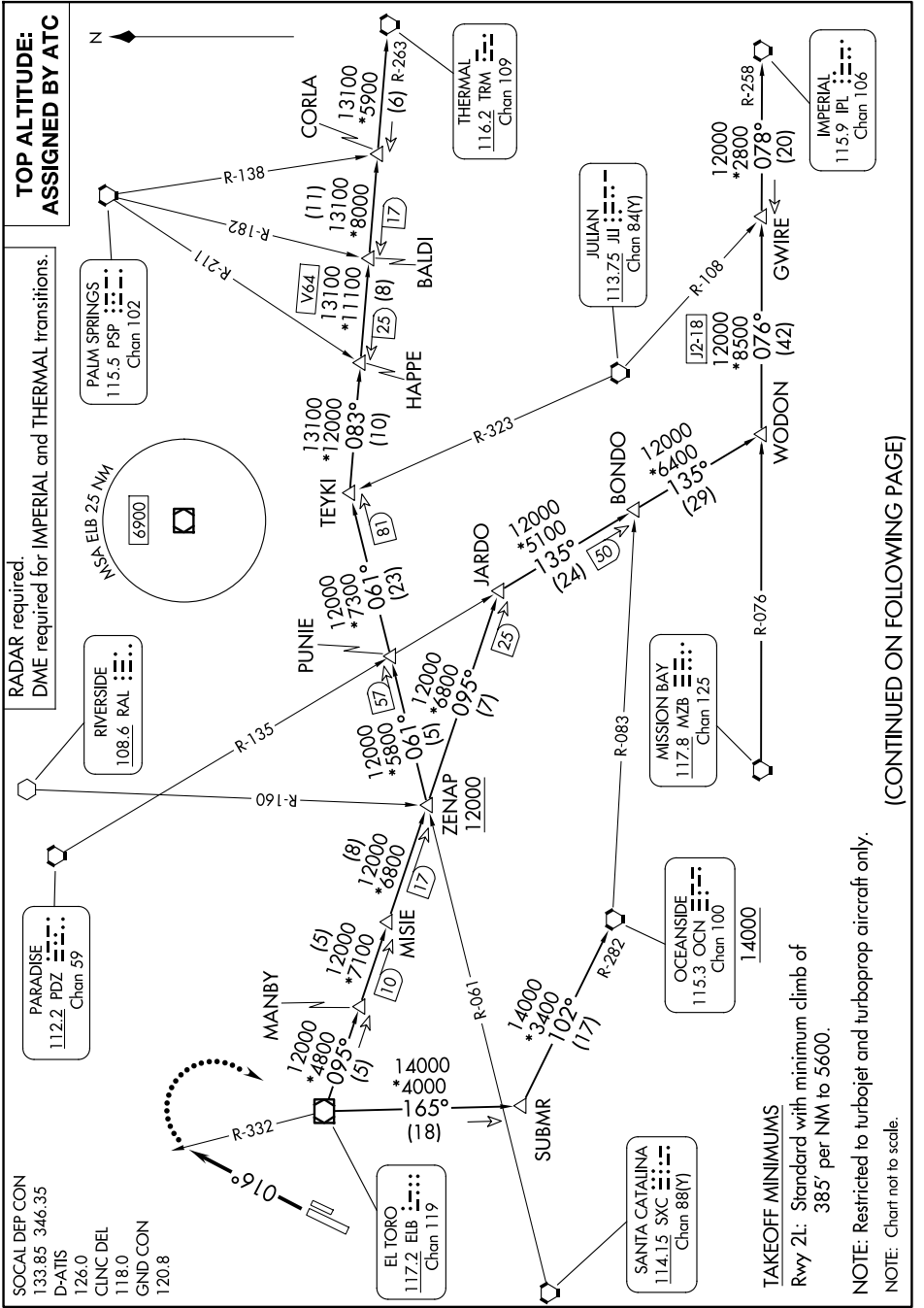


EL TORO FIVE DEPARTURE

9200 1000 60 01 9200 2000 11 'E-WS



EL TORO FIVE DEPARTURE

(CONTINUED ON FOLLOWING PAGE)

SW-3, 11 JUN 2026 to 09 JUL 2026



DEPARTURE ROUTE DESCRIPTION

TAKEOFF RUNWAY 2L: Climb on heading 016° for RADAR vectors to ELB VOR/DME, thence

. . . .(transition) or (assigned route). Maintain ATC assigned altitude. Expect filed altitude ten minutes after departure.

LOST COMMUNICATIONS: If not in contact with departure control by ELB R-332, turn right direct ELB VOR/DME, climb to 7000 and proceed on assigned transition or route. Climb to filed altitude ten minutes after departure.

IMPERIAL TRANSITION (ELB5.IPL): From over ELB VOR/DME on ELB R-095 to JARDO, then on PDZ R-135 to WODON, then on MZB R-076 and IPL R-258 to GWIRE, then on IPL R-258 to IPL VORTAC.

OCEANSIDE TRANSITION (ELB5.OCN): From over ELB VOR/DME on ELB R-165 to SUBMR, then on OCN R-282 to OCN VORTAC.

THERMAL TRANSITION (ELB5.TRM): From over ELB VOR/DME on ELB R-095 to ZENAP, then on SXC R-061 to TEYKI, then on TRM R-263 to TRM VORTAC.

SW-3, 11 JUN 2026 to 09 JUL 2026

SW-3, 11 JUN 2026 to 09 JUL 2026