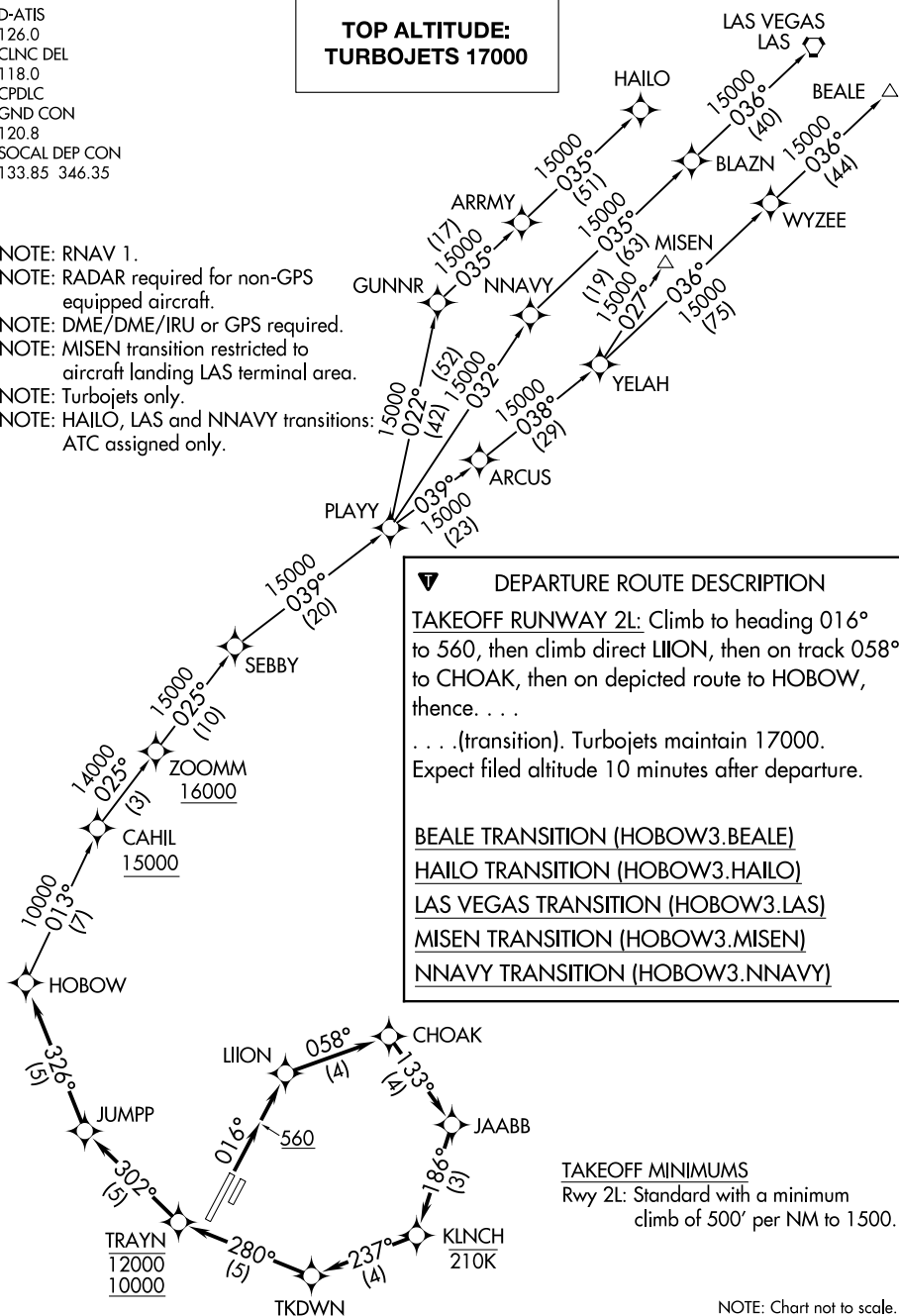


D-ATIS  
126.0  
CLNC DEL  
118.0  
CPDLC  
GND CON  
120.8  
SOCAL DEP CON  
133.85 346.35

**TOP ALTITUDE:  
TURBOJETTS 17000**

- NOTE: RNAV 1.
- NOTE: RADAR required for non-GPS equipped aircraft.
- NOTE: DME/DME/IRU or GPS required.
- NOTE: MISEN transition restricted to aircraft landing LAS terminal area.
- NOTE: Turbojets only.
- NOTE: HAILO, LAS and NNAVY transitions: ATC assigned only.



**DEPARTURE ROUTE DESCRIPTION**

TAKEOFF RUNWAY 2L: Climb to heading 016° to 560, then climb direct LIION, then on track 058° to CHOAK, then on depicted route to HOBOW, thence. . . .  
 . . . (transition). Turbojets maintain 17000. Expect filed altitude 10 minutes after departure.

BEALE TRANSITION (HOBOW3.BEALE)  
HAILO TRANSITION (HOBOW3.HAILO)  
LAS VEGAS TRANSITION (HOBOW3.LAS)  
MISEN TRANSITION (HOBOW3.MISEN)  
NNAVY TRANSITION (HOBOW3.NNAVY)

**TAKEOFF MINIMUMS**  
 Rwy 2L: Standard with a minimum climb of 500' per NM to 1500.

NOTE: Chart not to scale.

SW-3, 11 JUN 2026 to 09 JUL 2026

SW-3, 11 JUN 2026 to 09 JUL 2026