

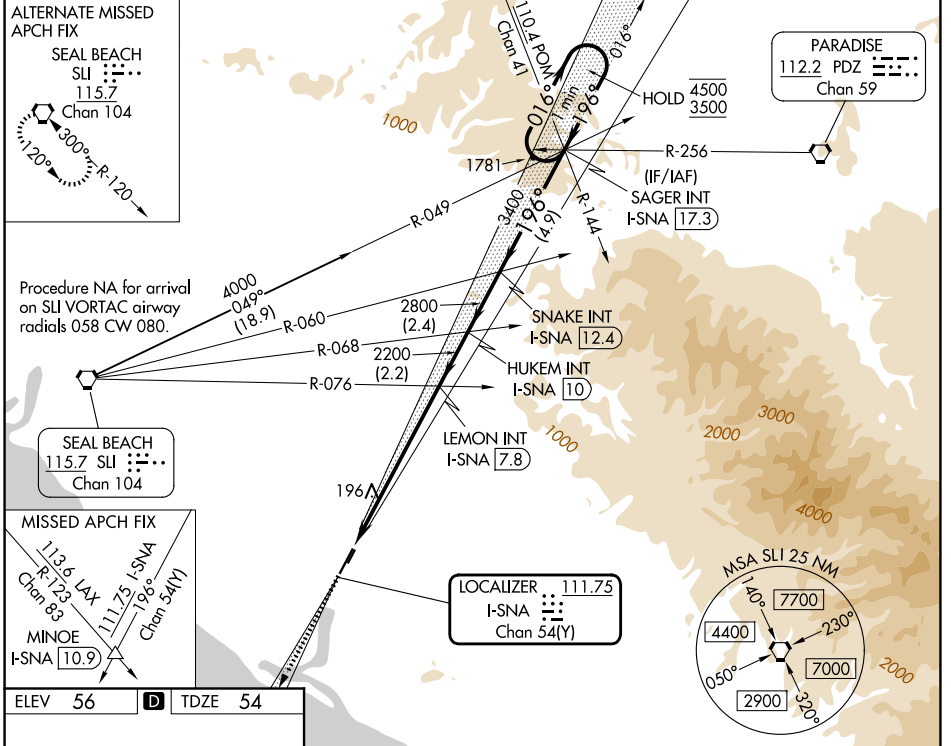
LOC/DME I-SNA 111.75 Chan 54(Y)	APP CRS 196°	Rwy Ldg TDZE Apt Elev	5700 54 56
---	------------------------	-----------------------------	---------------------------------------

ILS RWY 20R (SA CAT I)

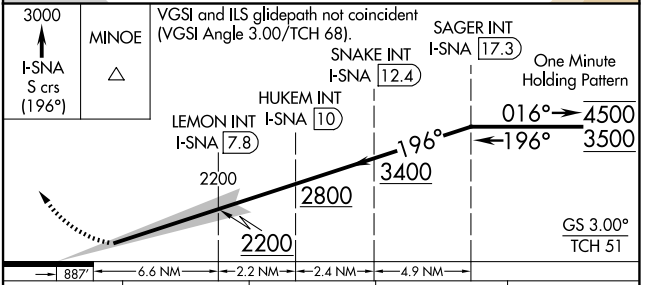
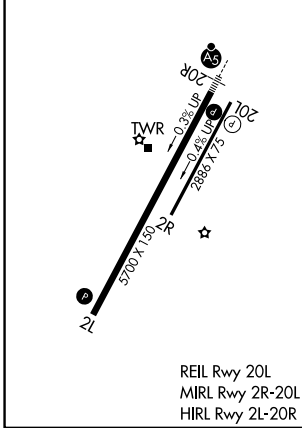
JOHN WAYNE/ORANGE COUNTY (SNA)

<p>Requires specific OPSPEC, MSPEC, or LOA approval. Procedure NA when tower closed.</p>	<p>MALS R</p>	<p>MISSED APPROACH: Climb to 3000 on I-SNA LOC south course (196°) to MINOE INT/I-SNA 10.9 DME.</p>		
		<p>Procedure NA when tower closed.</p>		

D-ATIS 126.0	SOCAL APP CON 121.3 263.1	JOHN WAYNE TOWER* 126.8 (CTAF) 343.625	GND CON 120.8	UNICOM 122.95
------------------------	-------------------------------------	--	-------------------------	-------------------------



ELEV 56	D	TDZE 54
---------	----------	---------



CATEGORY	A	B	C	D
S-ILS 20R	RA 201/14 167 DA 221			

SA CATEGORY I ILS - SPECIAL AIRCREW & AIRCRAFT CERTIFICATION REQUIRED

SW-3, 11 JUN 2026 to 09 JUL 2026

SW-3, 11 JUN 2026 to 09 JUL 2026