

D-ATIS 126.0  
CLNC DEL 118.0  
CPDLC  
GND CON 120.8  
SOCAL DEF CON 133.85 346.35

**TOP ALTITUDE:**  
**14000**

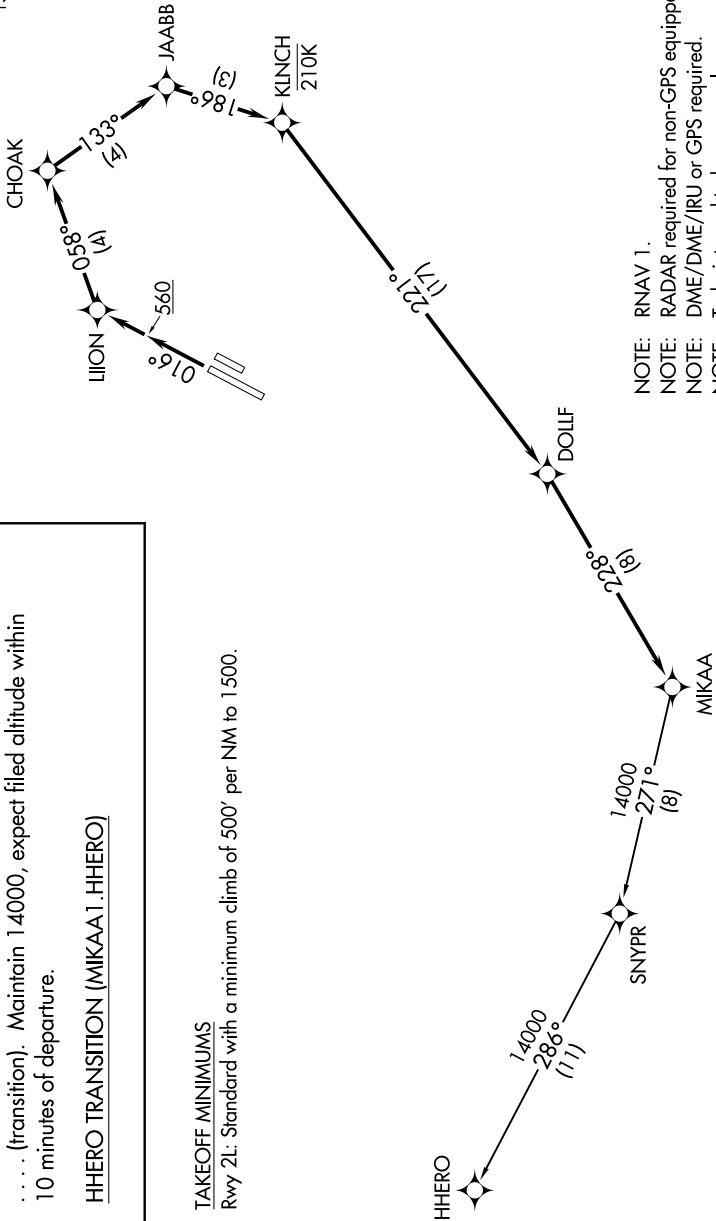
**DEPARTURE ROUTE DESCRIPTION**

**TAKEOFF RUNWAY 2L:** Climb heading 016°, then direct LIJON, then on track 058° to CHOAK, then on depicted route to MIKAA thence. . . .

. . . (transition). Maintain 14000, expect filed altitude within 10 minutes of departure.

**HHERO TRANSITION [MIKAA1.HHERO]**

**TAKEOFF MINIMUMS**  
Rwy 2L: Standard with a minimum climb of 500' per NM to 1500.



NOTE: RNAV 1.  
NOTE: RADAR required for non-GPS equipped aircraft.  
NOTE: DME/DME/IRU or GPS required.  
NOTE: Turbojets and turboprops only.

NOTE: Chart not to scale.

SW-3, 11 JUN 2026 to 09 JUL 2026

SW-3, 11 JUN 2026 to 09 JUL 2026