


APP CRS	Rwy Ldg	5700
196°	TDZE	54
	Apt Elev	56

RNAV (RNP) Z RWY 20R

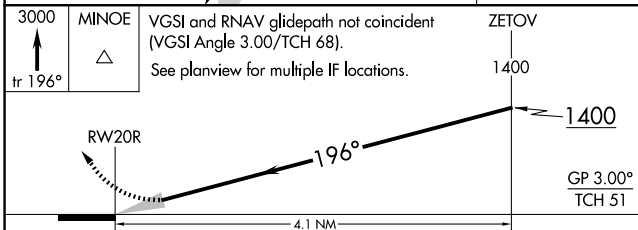
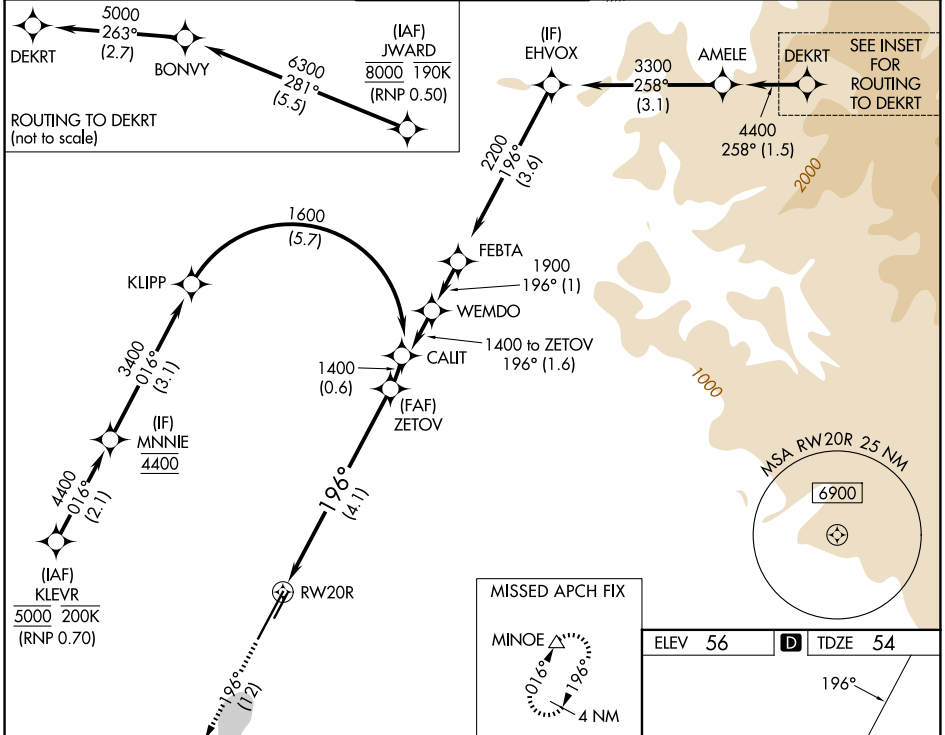
JOHN WAYNE/ORANGE COUNTY (SNA)

RNP AR APCH - GPS. Authorization required. From JWARD: min RNP 0.50. From KLEVR, RF, min RNP 0.70.

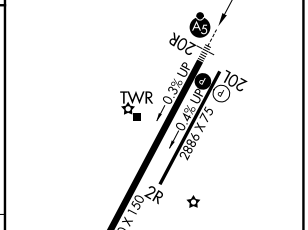
For uncompensated Baro-VNAV systems, procedure NA below 5°C or above 54°C.

MALSR  MISSED APPROACH: Climb to 3000 on track 196° to MINOE and hold, continue climb-in-hold.

D-ATIS 126.0	SOCAL APP CON 121.3 263.1	JOHN WAYNE TOWER ★ 126.8 (CTAF) 343.625	GND CON 120.8	UNICOM 122.95
------------------------	-------------------------------------	---	-------------------------	-------------------------



ELEV 56	D TDZE 54
---------	------------------



CATEGORY	A	B	C	D
RNP 0.11 DA		376/26	322 (400-½)	
RNP 0.15 DA		562/55	508 (600-1)	
RNP 0.30 DA		618-1¼	564 (600-1¼)	

AUTHORIZATION REQUIRED

REIL Rwy 20L
HIRL Rwy 2L-20R
MIRL Rwy 2R-20L

SW-3, 11 JUN 2026 to 09 JUL 2026

SW-3, 11 JUN 2026 to 09 JUL 2026