

APP CRS	Rwy Ldg	<b>5700</b>
<b>016°</b>	TDZE	<b>56</b>
	Apt Elev	<b>56</b>

# RNAV (RNP) Z RWY 2L

JOHN WAYNE/ORANGE COUNTY (SNA)

RNP AR APCH - GPS. Authorization required. From OSOYI: RF.		MISSED APPROACH: Climb to 800 then climbing left turn to 2600 direct SLI VORTAC and hold.	
▼ For uncompensated Baro-VNAV systems, procedure NA below 5°C or above 54°C.			

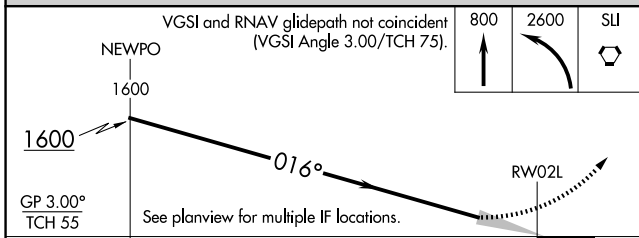
D-ATIS <b>126.0</b>	SOCAL APP CON <b>121.3 263.1</b>	JOHN WAYNE TOWER * <b>126.8 (CTAF) 343.625</b>	GND CON <b>120.8</b>	UNICOM <b>122.95</b>
------------------------	-------------------------------------	---	-------------------------	-------------------------



MSA RWY 2L 25 NM  
6900

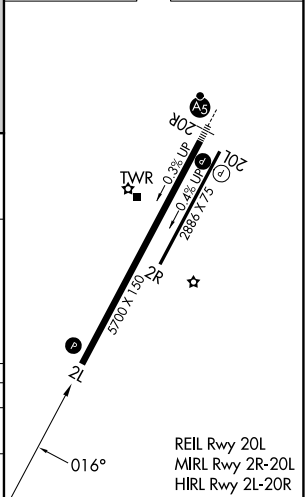
Procedure NA for arrivals at MINOE on V25 southeast bound.

ELEV	56	D	TDZE	56
------	----	---	------	----



CATEGORY	A	B	C	D
RNP 0.30 DA		403-1 1/8	347 (400-1 1/8)	

## AUTHORIZATION REQUIRED



SW-3, 11 JUN 2026 to 09 JUL 2026

SW-3, 11 JUN 2026 to 09 JUL 2026