

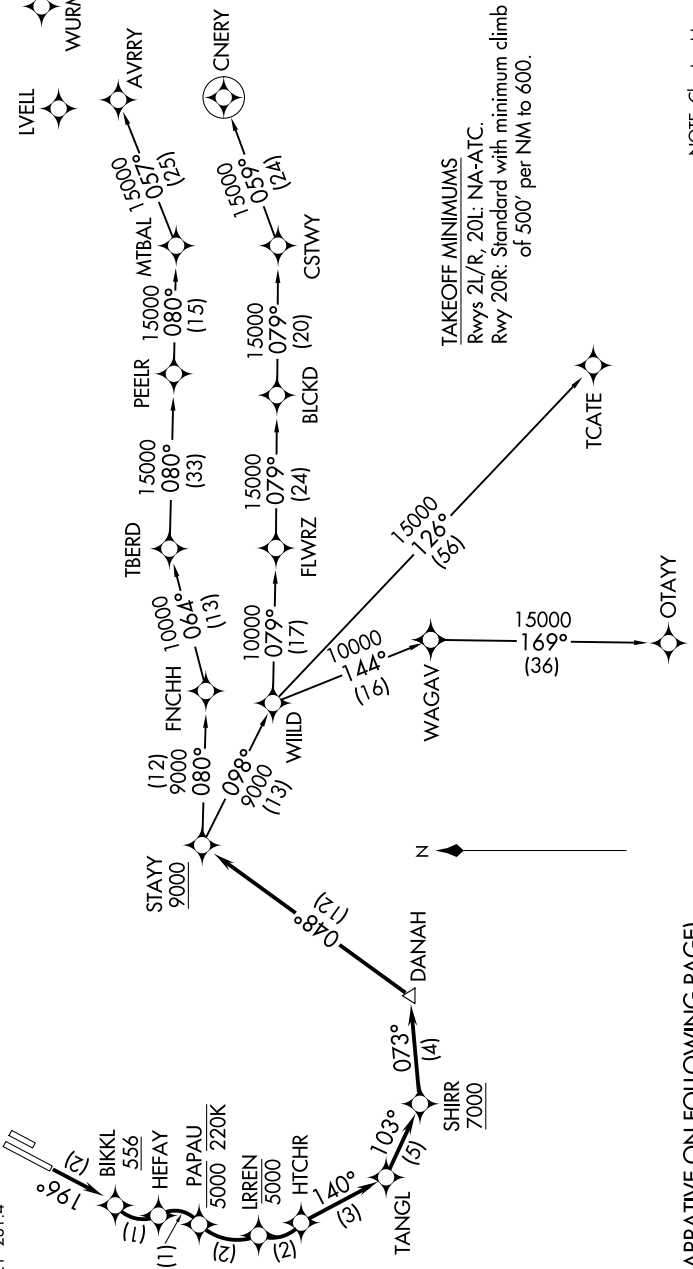
9200 TNR 60 01 2020 NNR 11 'E-WS

D-AIIS
126.0
CLNC DEL
118.0
CPDC
GND CON
120.8
JOHN WAYNE TOWER *
126.8 343.625
SOCAL DEP CON
128.1 281.4

NOTE: RNP 1.
NOTE: RF required.
NOTE: GPS required.
NOTE: RADAR required.
NOTE: Turbojet only.
NOTE: Parachute jumping all hours, 14000 and below, north of route between STAYY and FNCHH.
NOTE: Do not file-To be assigned by ATC.

TOP ALTITUDE:
13000

TRUE
LVLL
WURMO



TAKEOFF MINIMUMS
Rwys 2L/R, 20L: NA-ATC.
Rwy 20R: Standard with minimum climb of 500' per NM to 600.

(NARRATIVE ON FOLLOWING PAGE)

NOTE: Chart not to scale.



DEPARTURE ROUTE DESCRIPTION

TAKEOFF RUNWAY 20R: Climb on course 196° to cross BIKKL at or above 556, then left turn to HEFAY, then right turn to cross PAPAU at or below 5000 and at or below 220K, then left turn to cross LRREN at or below 5000, then left turn to HTCHR, then on track 140° to TANGL, then on track 103° to cross SHIRR at or above 7000, then on track 073° to DANAH, then on track 048° to cross STAYY at or above 9000, thence. . . .

. . . .on (transition). Maintain 13000. Expect filed altitude 10 minutes after departure.

AVRRY TRANSITION (STAYY4.AVRRY)

CNERY TRANSITION (STAYY4.CNERY)

OTAYY TRANSITION (STAYY4.OTAYY)

TCATE TRANSITION (STAYY4.TCATE)

SW-3, 11 JUN 2026 to 09 JUL 2026

SW-3, 11 JUN 2026 to 09 JUL 2026