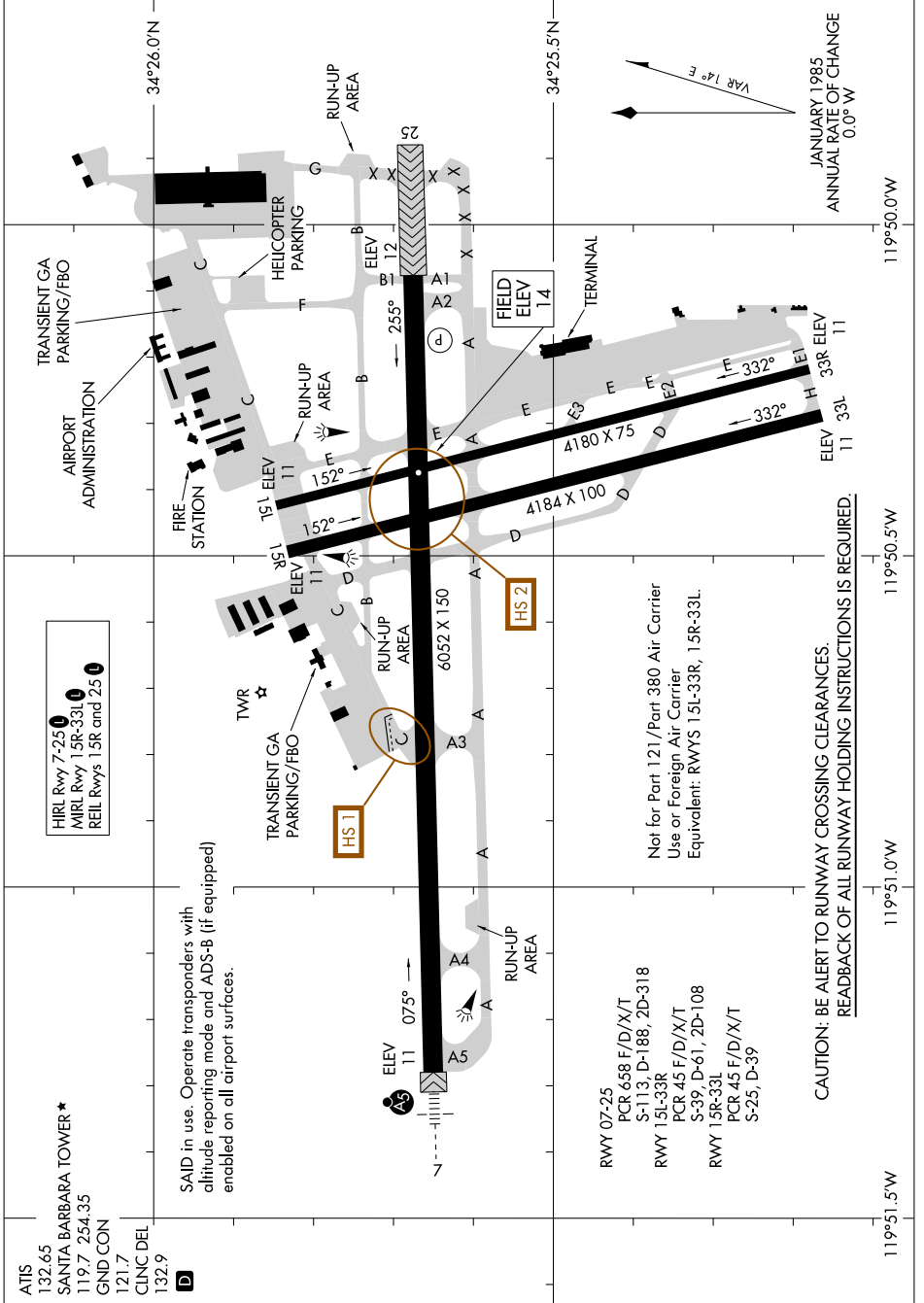


# AIRPORT DIAGRAM

AL-378 (FAA)

SANTA BARBARA MUNI (S.B.A)  
SANTA BARBARA, CALIFORNIA

SW-3, 11 JUN 2026 to 09 JUL 2026



ATIS 132.65  
 SANTA BARBARA TOWER \* 119.7 254.35  
 GND CON 121.7  
 CLNC DEL 132.9

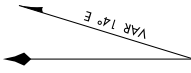
SAID in use. Operate transponders with altitude reporting mode and ADS-B (if equipped) enabled on all airport surfaces.

HIRL Rwy 7-25  
 MIRL Rwy 15R-33L  
 REL Rwy 15R and 25

RWY 07-25  
 PCR 658 F/D/X/T  
 S-113, D-188, 2D-318  
 RWY 15L-33R  
 PCR 45 F/D/X/T  
 S-39, D-61, 2D-108  
 RWY 15R-33L  
 PCR 45 F/D/X/T  
 S-25, D-39

Not for Part 121/Part 380 Air Carrier  
 Use or Foreign Air Carrier  
 Equivalent: RWYS 15L-33R, 15R-33L.

CAUTION: BE ALERT TO RUNWAY CROSSING CLEARANCES.  
 READBACK OF ALL RUNWAY HOLDING INSTRUCTIONS IS REQUIRED.



JANUARY 1985  
 ANNUAL RATE OF CHANGE  
 0.0° W

# AIRPORT DIAGRAM

SANTA BARBARA, CALIFORNIA  
SANTA BARBARA MUNI (S.B.A)

SW-3, 11 JUN 2026 to 09 JUL 2026