

# GAUCH THREE DEPARTURE (RNAV)

AL-378 (FAA)

9202 200 60 01 920202 N000 11 'E'-WS

## DEPARTURE ROUTE DESCRIPTION

**TAKEOFF RUNWAY 7:** Climb on heading 075° to intercept course 130° to RROJO, then on track 198° to KELLP, then on track 245 to CORRK, then on track 254° to KNNZI, then on track 331° to cross GAUCH at or above 6000, thence . . . . .

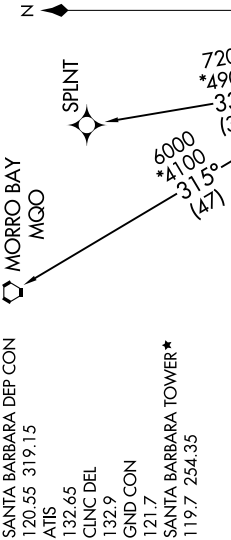
**TAKEOFF RUNWAYS 15L/R:** Climb on heading 152° to intercept course 202° to CORRK, then on track 254° to KNNZI, then on track 331° to cross GAUCH at or above 6000, thence . . . . .

**TAKEOFF RUNWAY 25:** Climb direct GRPES, then on track 255° to GRRRR, then on track 320° to cross GAUCH at or above 6000, thence . . . . .  
...on (transition). Maintain ATC assigned altitude. Expect final altitude 10 minutes after departure.

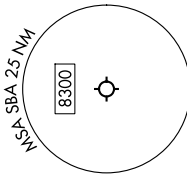
MORRO BAY TRANSITION (GAUCH3.MGO)  
SPLINT TRANSITION (GAUCH3.SPLINT)

RNAV 1 - DME/DME/IRU or GPS.

RADAR required for non-GPS equipped aircraft.

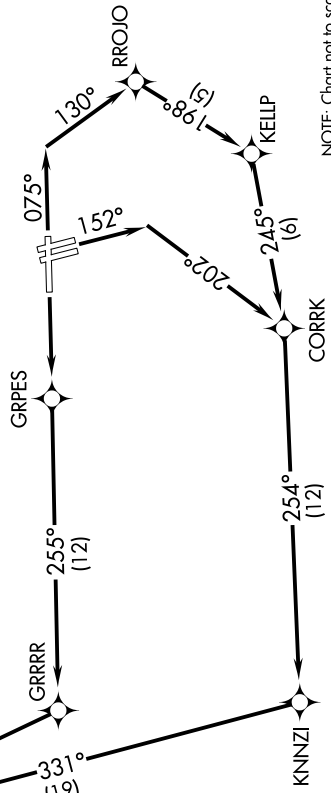


**TOP ALTITUDE:  
ASSIGNED BY ATC**



### TAKEOFF MINIMUMS

- Rwys 33L/R: NA - Environmental.
- Rwys 7, 15L: Standard with minimum climb of 500'/NM to 520.
- Rwy 15R: 300-1 with minimum climb of 500'/NM to 520.
- Rwy 25: Standard with minimum climb of 220'/NM to 3900.



NOTE: Chart not to scale.