

# PITBL TWO ARRIVAL (RNAV)

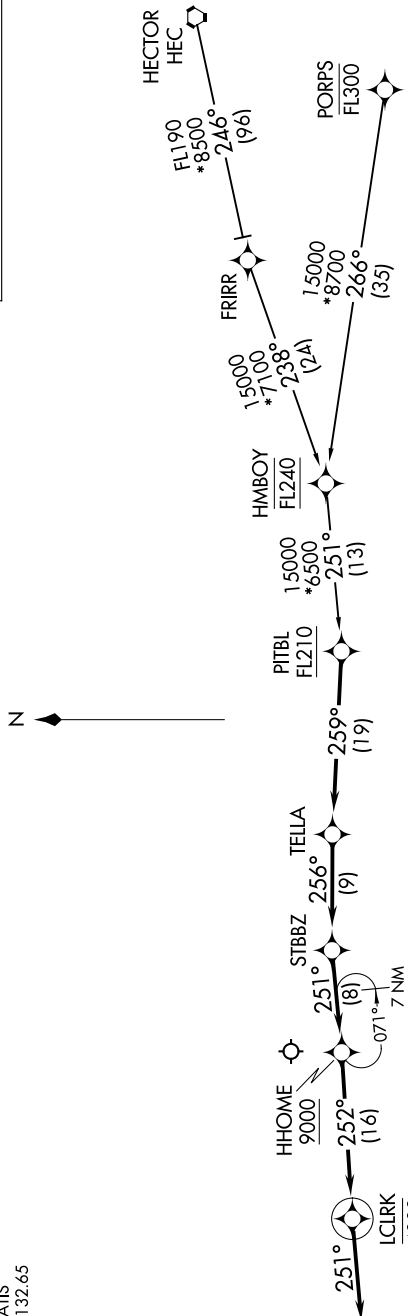
AL-378 (FAA)

SANTA BARBARA MUNI (SBA)  
SANTA BARBARA, CALIFORNIA

SW-3, 11 JUN 2026 to 09 JUL 2026 11:18-WS

SANTA BARBARA APP CON  
120.55 319.15  
ATIS  
132.65

RNAV 1 - DME/DME/IRU or GPS.  
RADAR required.



NOTE: Jet and turboprop aircraft only.

NOTE: Chart not to scale.

## ARRIVAL ROUTE DESCRIPTION

HECTOR TRANSITION (HEC.PITBL2)

PORPS TRANSITION (PORPS.PITBL2)

From PITBL on track 259° to TELLA.

**LANDING RUNWAYS 7, 25:** From TELLA on track 256° to STBBZ, then on track 251° to cross HHOME at or above 9000, then on track 252° to cross ICLRK at 4000, then on track 251°. Expect RADAR vectors to final approach course.

# PITBL TWO ARRIVAL (RNAV)

(PITBL.PITBL2) 07AUG25

SANTA BARBARA, CALIFORNIA  
SANTA BARBARA MUNI (SBA)

SW-3, 11 JUN 2026 to 09 JUL 2026