


WAAS CH 78306 W07A	APP CRS 074°	Rwy Ldg TDZE Apt Elev	6052 13 14
--	------------------------	-----------------------------	---------------------------------------

RNAV (GPS) RWY 7

SANTA BARBARA MUNI (SBA)

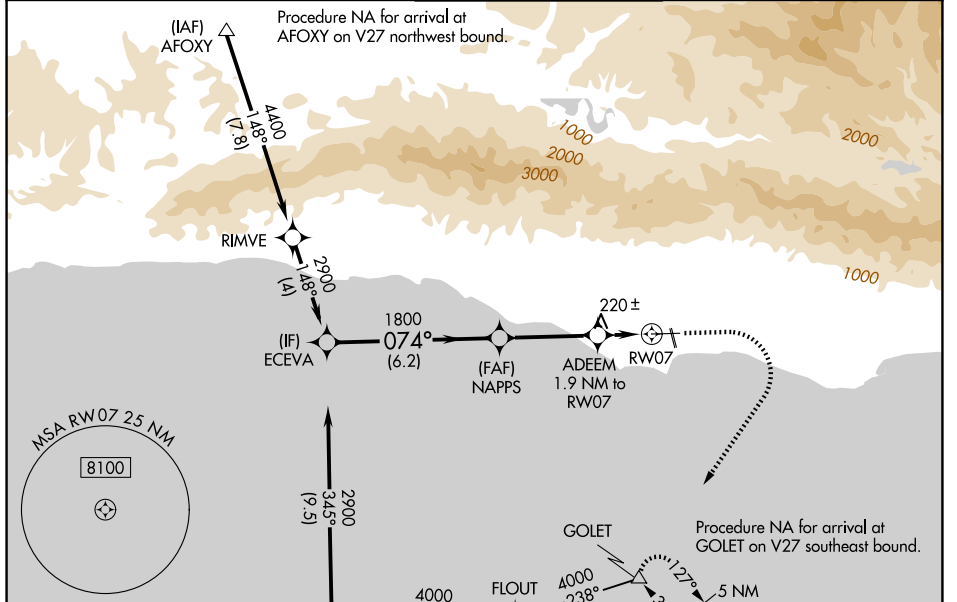
RNP APCH - GPS.

⚠ For uncompensated Baro-VNAV systems, LNAV/VNAV NA below 2°C or above 54°C. Circling Rwy 15L/R and 33L/R NA at night. Circling NA for Cats C and D north of Rwy 7-25. For Inop ALS, increase LNAV/VNAV all Cats visibility to 1 3/8 SM and LNAV Cats C and D increase visibility to 1 3/8 SM.

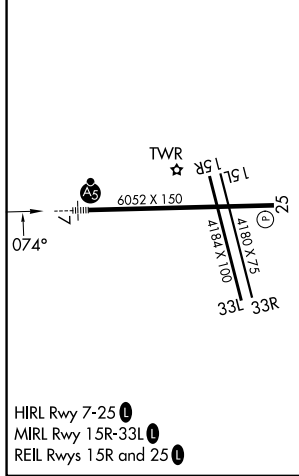
MALSR 

MISSED APPROACH: Climb to 700 then climbing right turn to 4000 direct GOLET and hold, continue climb-in-hold to 4000.

ATIS 132.65	SANTA BARBARA APP CON* 120.55 319.15 (151°-329°) 125.4 291.1 (330°-150°)	SANTA BARBARA TOWER* 119.7 (CTAF) 0 254.35	GND CON 121.7	UNICOM 122.95
-----------------------	--	---	-------------------------	-------------------------



ELEV 14	D	TDZE 13
---------	----------	---------



	ECEVA	NAPPS	ADEEM	GOLET
	2900	1800	1.9 NM to RW07	700 4000
	074°	1800	1.3 NM to RW07	△
	GP 3.00°	6.2 NM	3.5 NM	0.6 1.3 NM
	TCH 52			
CATEGORY	A	B	C	D
LPV DA		263/24	250 (300-1/2)	
LNAV/VNAV DA		480/50	467 (500-1)	
LNAV MDA	480/24	467 (500-1/2)	480/50	467 (500-1)
CIRCLING	700-1 686 (700-1)	760-1 746 (800-1)	760-2 1/4 746 (800-2 1/4)	900-3 886 (900-3)

SW-3, 11 JUN 2026 to 09 JUL 2026

SW-3, 11 JUN 2026 to 09 JUL 2026