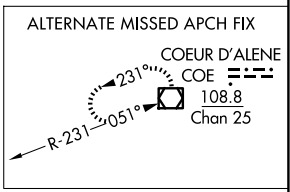
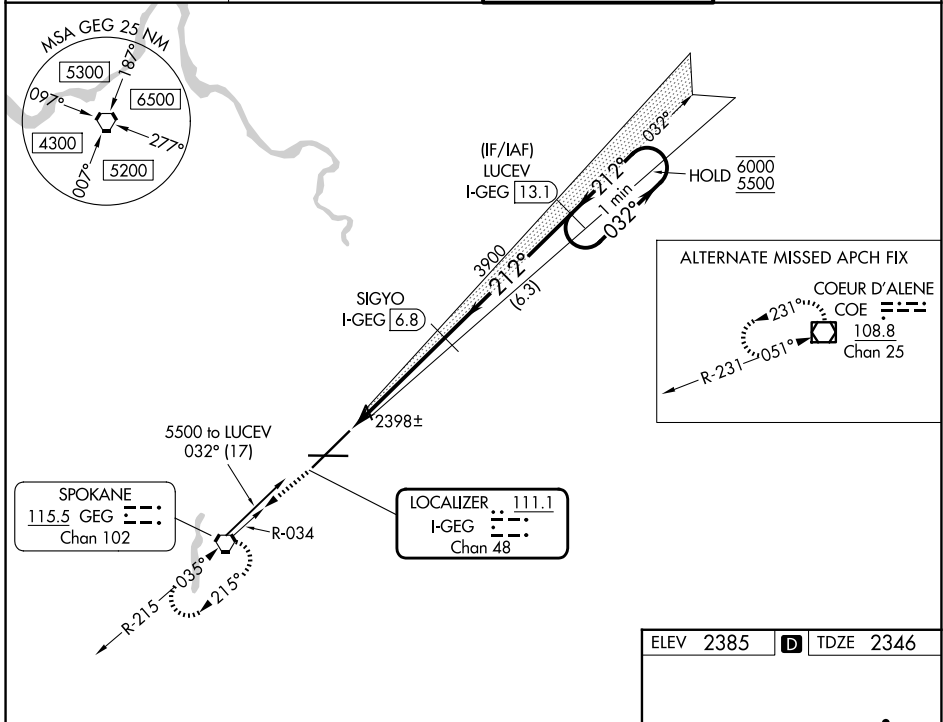


LOC/DME I-GEG 111.1 Chan 48	APP CRS 212°	Rwy Ldg 11002 TDZE 2346 Apt Elev 2385
---	------------------------	--

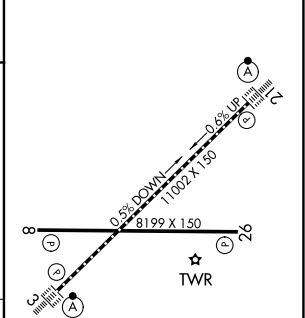
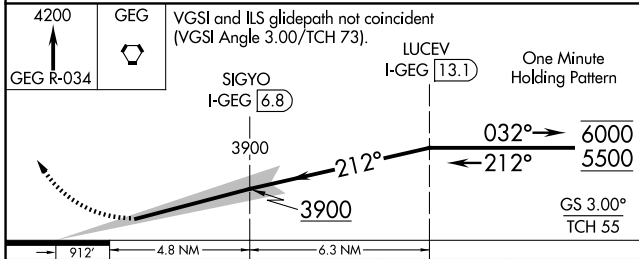
ILS RWY 21 (CAT II & III)
SPOKANE INTL (GEG)

DME required.	ALSF-2 	MISSED APPROACH: Climb to 4200 on GEG VORTAC R-034 to GEG VORTAC and hold, continue climb-in-hold to 4200.
---------------	------------	--

ATIS 124.325 254.375	SPOKANE APP CON 123.75 282.25 (205°-025°) 133.35 263.0 (026°-204°)	SPOKANE TOWER 118.3 278.3	GND CON 121.9 348.6
--------------------------------	--	-------------------------------------	-------------------------------



ELEV 2385	D	TDZE 2346
-----------	----------	-----------



CATEGORY	A	B	C	D
S-ILS 21	CAT II RA 147/12 100 DA 2446			
S-ILS 21	CAT III RVR 03			

CATEGORY II & III ILS - SPECIAL AIRCREW & AIRCRAFT CERTIFICATION REQUIRED

TDZL/RCLS Rwy 3 and 21
REIL Rwy 8 and 26
HIRL Rwy 3-21
MIRL Rwy 8-26

NW-1, 11 JUN 2026 to 09 JUL 2026

NW-1, 11 JUN 2026 to 09 JUL 2026