

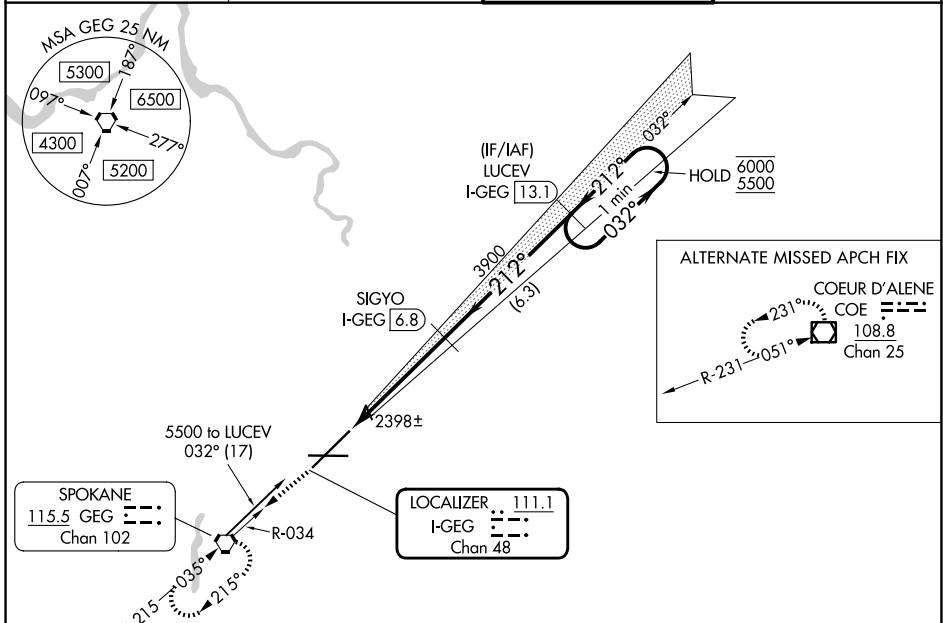
LOC/DME I-GEG <b>111.1</b> Chan <b>48</b>	APP CRS <b>212°</b>	Rwy Ldg <b>11002</b> TDZE <b>2346</b> Apt Elev <b>2385</b>
---	------------------------	--

# ILS RWY 21 (SA CAT I)

SPOKANE INTL (GEG)

DME required. Requires specific OPSPEC, MSPEC, or LOA approval.	ALSF-2 	MISSED APPROACH: Climb to 4200 on GEG VORTAC R-034 to GEG VORTAC and hold, continue climb-in-hold to 4200.
--	------------	--

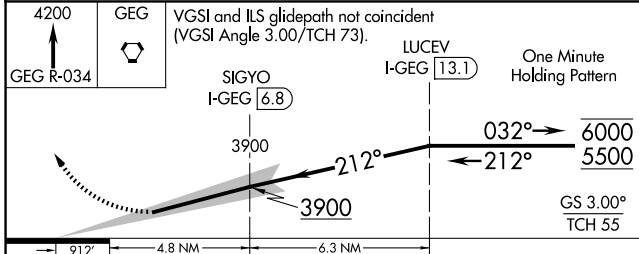
ATIS <b>124.325 254.375</b>	SPOKANE APP CON <b>123.75 282.25</b> (205°-025°) <b>133.35 263.0</b> (026°-204°)	SPOKANE TOWER <b>118.3 278.3</b>	GND CON <b>121.9 348.6</b>
--------------------------------	--	-------------------------------------	-------------------------------



NW-1, 11 JUN 2026 to 09 JUL 2026

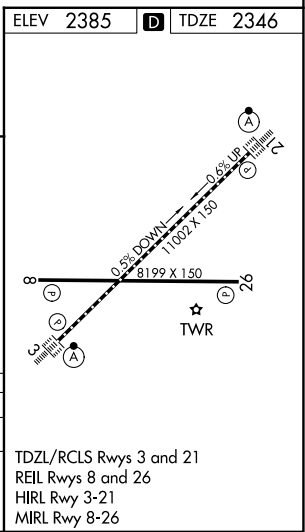
NW-1, 11 JUN 2026 to 09 JUL 2026

ELEV 2385	<b>D</b> TDZE 2346
-----------	--------------------



CATEGORY	A	B	C	D
S-ILS 21	RA 197/14 150 DA 2496			

**SA CATEGORY I ILS - SPECIAL AIRCREW & AIRCRAFT CERTIFICATION REQUIRED**



TDZL/RCLS Rwy 3 and 21  
REIL Rwy 8 and 26  
HIRL Rwy 3-21  
MIRL Rwy 8-26