

RNAV (RNP) Z RWY 21

SPOKANE INTL (GEG)

APP CRS	Rwy Ldg	11002
212°	TDZE	2346
	Apt Elev	2385

RNP AR APCH.

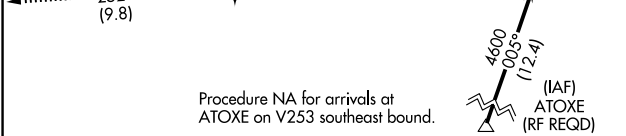
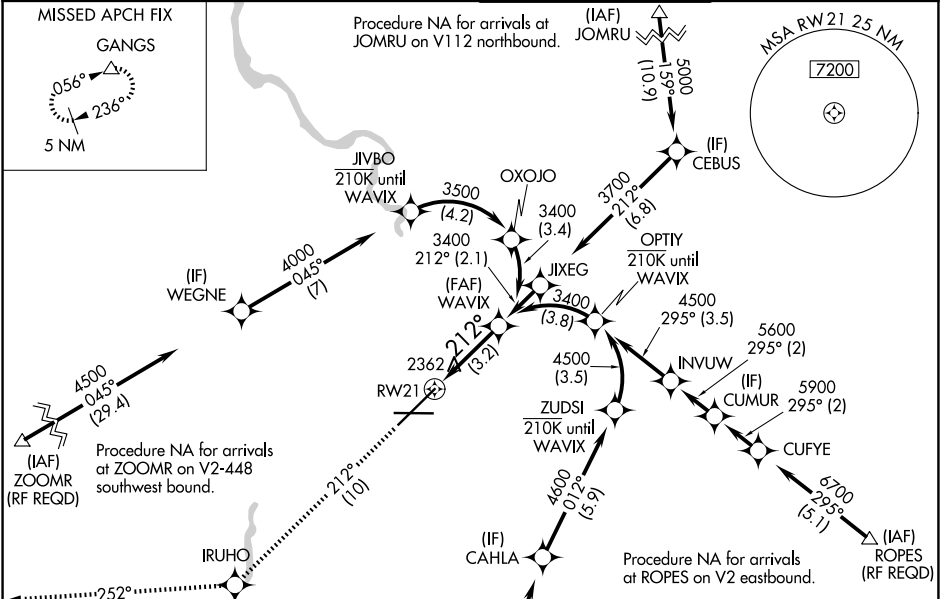
▼ For uncompensated Baro-VNAV systems, procedure NA below -19°C or above 43°C. For inop ALS increase RNP 0.11 visibility all Cats to 3/4, RNP 0.15 visibility all Cats to 1 1/2 and RNP 0.30 visibility all Cats to 1 3/8.

ALSIF-2

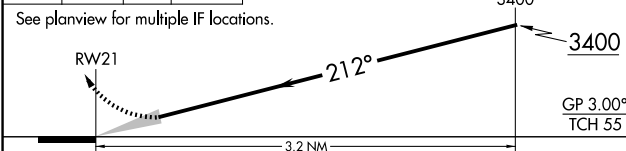
MISSED APPROACH: Climb to 5000 on track 212° to IRUHO and on track 252° to GANGS and hold.

*Missed approach requires minimum climb of 310 feet per NM to 3000.

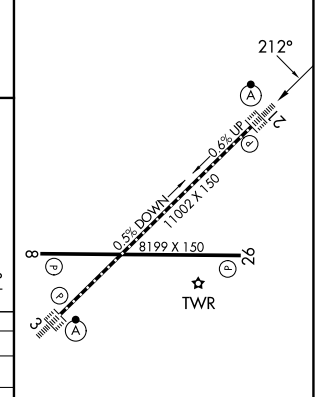
ATIS 124.325 254.375	SPOKANE APP CON 123.75 282.25 (205°-025°) 133.35 263.0 (026°-204°)	SPOKANE TOWER 118.3 278.3	GND CON 121.9 348.6
---------------------------------------	---	--	--------------------------------------



5000	IRUHO	GANGS	VGSI and RNAV glidepath not coincident (VGSI Angle 3.00/TCH 73).
tr 212°	tr 252°	△	WAVIX



ELEV 2385	D TDZE 2346
-----------	--------------------



CATEGORY	A	B	C	D
RNP 0.11 DA*		2596/24	250 (300-1/2)	
RNP 0.15 DA		2699/30	353 (400-5/8)	
RNP 0.30 DA		2752/45	406 (400-7/8)	

TDZL/RCLS Rwy 3 and 21
REIL Rwy 8 and 26
HIRL Rwy 3-21
MIRL Rwy 8-26

AUTHORIZATION REQUIRED

NW-1, 11 JUN 2026 to 09 JUL 2026

NW-1, 11 JUN 2026 to 09 JUL 2026