

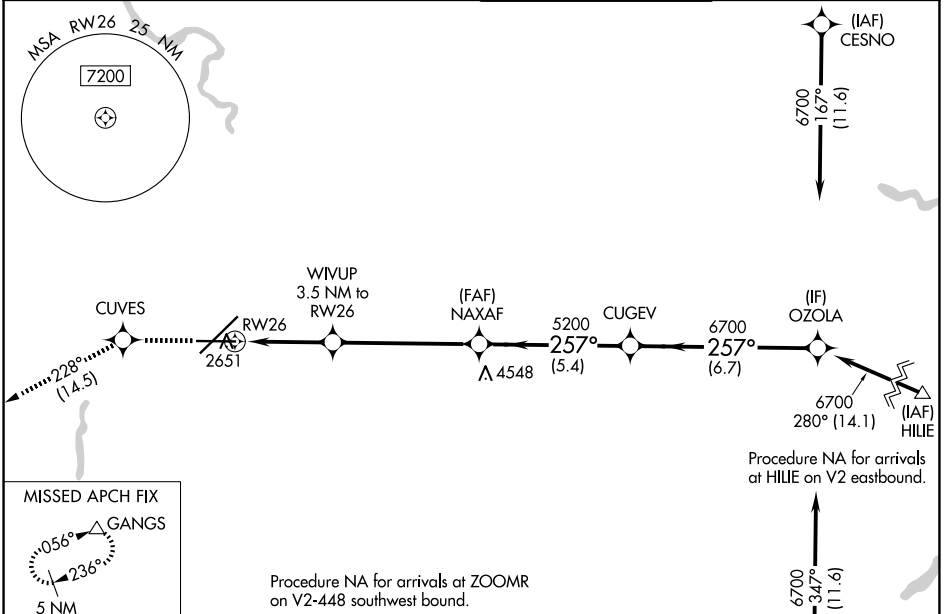
WAAS CH <b>93501</b> W26A	APP CRS <b>257°</b>	Rwy Ldg TDZE Apt Elev	<b>8199</b> <b>2372</b> <b>2385</b>
---------------------------------	------------------------	-----------------------------	---

# RNAV (GPS) Y RWY 26

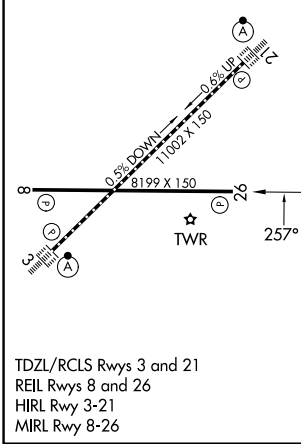
SPOKANE INTL (GEG)

RNP APCH.	MISSED APPROACH: Climb to 5000 direct CUVES and on track 228° to GANGS and hold.
<p><b>▼</b> Rwy 26 helicopter visibility reduction below ¼ SM NA.  <b>▲</b> For uncompensated Baro-VNAV systems, LNAV/VNAV NA below -18°C or above 54°C.</p>	

ATIS <b>124.325 254.375</b>	SPOKANE APP CON <b>123.75 282.25 (205°-025°)</b> <b>133.35 263.0 (026°-204°)</b>	SPOKANE TOWER <b>118.3 278.3</b>	GND CON <b>121.9 348.6</b>
--------------------------------	--	-------------------------------------	-------------------------------



ELEV 2385	<b>D</b>	TDZE 2372
-----------	----------	-----------



	5000	CUVES	tr 228°	GANGS				
					NAXAF	CUGEV	OZOLA	
	*LNAV only.		WIVUP 3.5 NM to RW26		5200	6700	6700	
	*1.6 NM to RW26				3520*	5200	6700	GP 3.00° TCH 48
	1.6 NM	1.9 NM	5.2 NM	5.4 NM	6.7 NM			
CATEGORY	A		B		C		D	
LPV DA	2688-1		316 (400-1)					
LNAV/VNAV DA	2911-1½		539 (600-1½)					
LNAV MDA	2920-1 548 (600-1)		2920-1½ 548 (600-1½)					
CIRCLING	2960-1 575 (600-1)	2980-1 595 (600-1)	3300-2¾ 915 (1000-2¾)	3400-3 1015 (1100-3)				

NW-1, 11 JUN 2026 to 09 JUL 2026

NW-1, 11 JUN 2026 to 09 JUL 2026