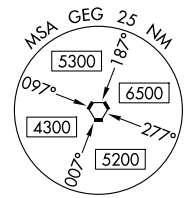
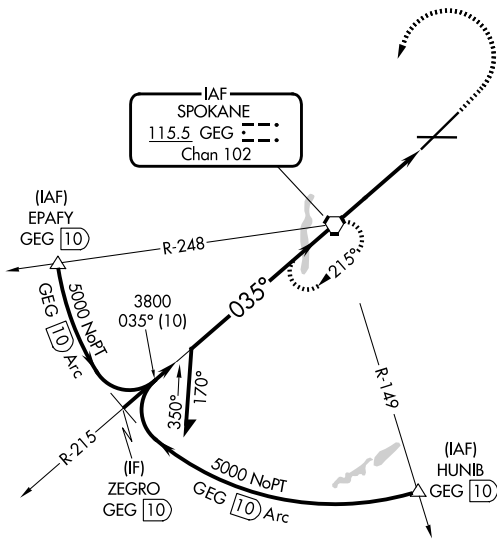


VORTAC GEG <b>115.5</b> Chan <b>102</b>	APP CRS <b>035°</b>	Rwy Ldg <b>11002</b> TDZE <b>2385</b> Aprt Elev <b>2385</b>
---	------------------------	---

# VOR RWY 3

SPOKANE INTL (GEG)

<p><b>⚠</b> Circling NA for Cat E southeast of Rwy 3-21. For inop ALS, increase S-3 Cat E visibility to 1 1/4 SM.</p>	ALS-F-2	MISSED APPROACH: Climb to 3200 then climbing left turn to 4200 direct GEG VORTAC and hold, continue climb-in-hold to 4200.
	<p>ATIS <b>124.325 254.375</b></p>	<p>SPOKANE APP CON <b>123.75 282.25</b> (205°-025°) <b>133.35 263.0</b> (026°-204°)</p>
		<p>GND CON <b>121.9 348.6</b></p>



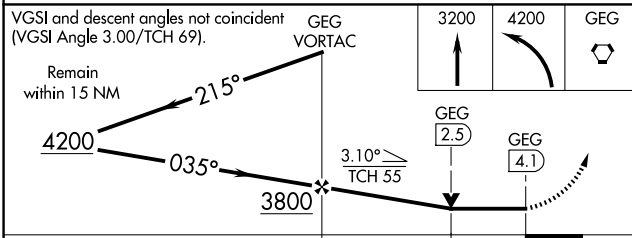
ELEV 2385	<b>D</b> TDZE 2385
-----------	--------------------

0.5% DOWN, 0.3% UP, 11002 X 150, 8199 X 150

TDZL/RCLS Rwy 3 and 21  
REIL Rwy 8 and 26  
HIRL Rwy 3-21  
MIRL Rwy 8-26

FAF to MAP 4.1 NM

Knots	60	90	120	150	180
Min:Sec	4:06	2:44	2:03	1:38	1:22



CATEGORY	A	B	C	D	E
S-3	2980/24	595 (600-1/2)	2980-1 1/4 595 (600-1 1/4)		
CIRCLING	2980-1	595 (600-1)	3180-2 1/4 795 (800-2 1/4)	3380-3	995 (1000-3)

NW-1, 11 JUN 2026 to 09 JUL 2026

NW-1, 11 JUN 2026 to 09 JUL 2026