

ZOOMR TWO ARRIVAL

AL-403 (FAA)

SPOKANE, WASHINGTON

9200 100 60 01 92002 N000 11 1-WN

ARRIVAL ROUTE DESCRIPTION

EPHRATA TRANSITION (EPH.ZOOMR2): From over EPH VORTAC on EPH R-065 to ZOOMR. Thence, . . .

MOSES LAKE TRANSITION (MWH.ZOOMR2): From over MWH VOR/DME on MWH R-054 to ZOOMR. Thence, . . .

. . . From over ZOOMR on SPOKANE VORTAC (GEG) R-239 to GANGS. Expect RADAR vectors to final approach course.

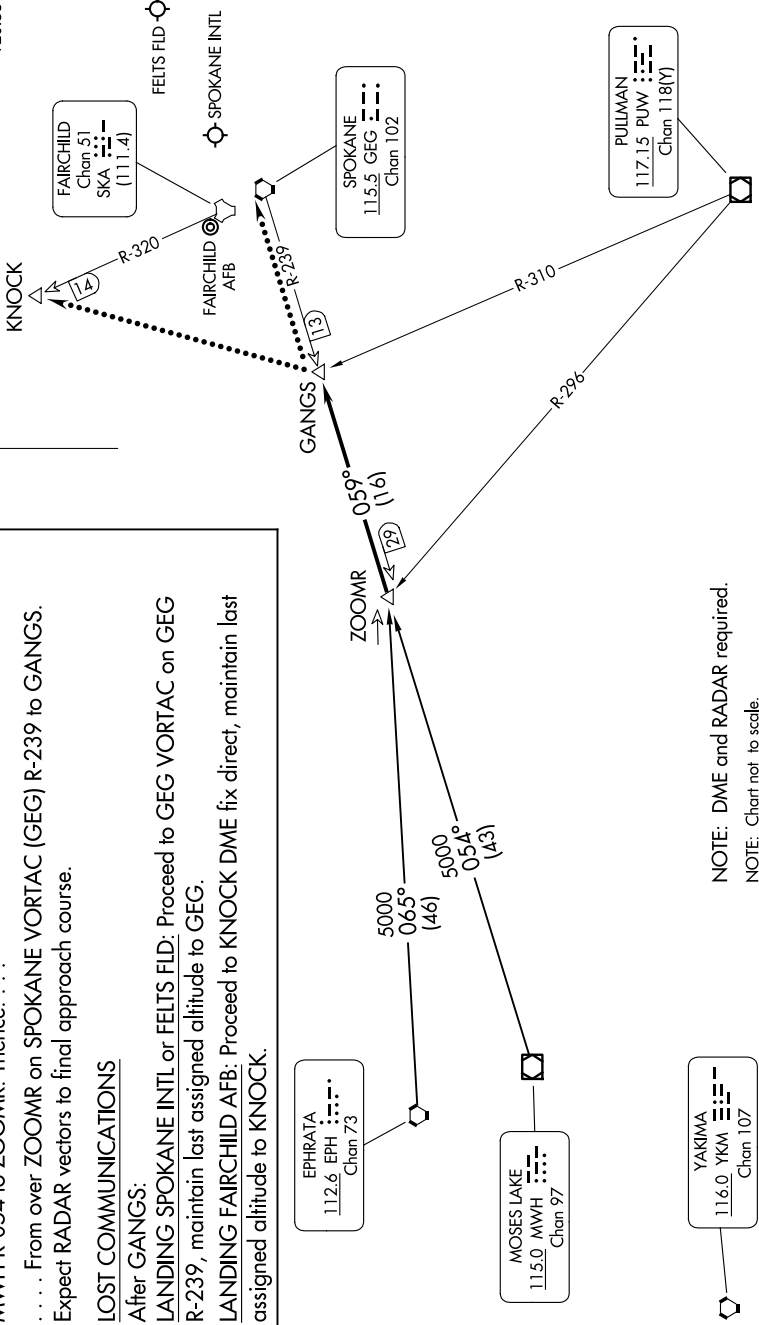
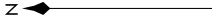
LOST COMMUNICATIONS

After GANGS:

LANDING SPOKANE INTL or FELTS FLD: Proceed to GEG VORTAC on GEG R-239, maintain last assigned altitude to GEG.

LANDING FAIRCHILD AFB: Proceed to KNOCK DME fix direct, maintain last assigned altitude to KNOCK.

SPOKANE APP CON
123.75 282.25
GEG ATIS
124.325 254.375
KSKA ATIS
257.625
SFF ATIS
120.55



ZOOMR TWO ARRIVAL

SPOKANE, WASHINGTON

NOTE: DME and RADAR required.
NOTE: Chart not to scale.

NW-1, 11 JUN 2026 to 09 JUL 2026