

ELLENSBURG FOUR ARRIVAL (RNAV)

9200 TUF 60 of 9200 N00R 14 1-WN

RNAV 1- DME/DME/IRU or GPS.

RADAR required.

SEATTLE APP CON
126.5 377.15
D-ATIS
135.825 270.1
GND CON
118.175 279.65
MCCHORD TOWER
124.8 259.3

ARRIVAL ROUTE DESCRIPTION

ELLENSBURG TRANSITION (ELN.ELN4)

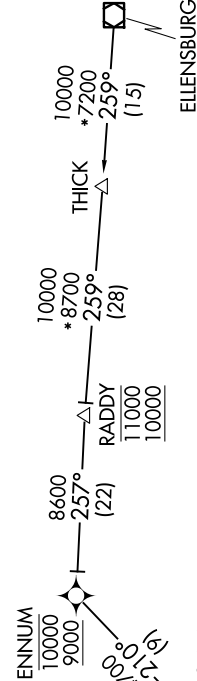
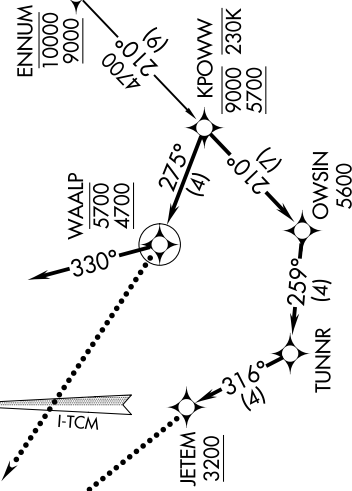
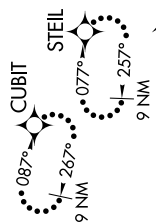
LANDING RUNWAY 16: From KPOWW on track 275° to cross WAALP between 4700 and 5700, then on heading 330° or as assigned by ATC. Expect RADAR vectors to final approach course.

LANDING RUNWAY 34: From KPOWW on track 210° to cross OWSIN at or above 5600, then on track 259° to TUNNR, then on track 316° to cross JETEM at or above 3200. Expect ILS or visual approach.

LOST COMMUNICATIONS

RUNWAY 16: At WAALP, proceed direct STEIL and execute approach, if unable hold as published, maintain 4000, squawk appropriate beacon code.

RUNWAY 34: At JETEM, execute approach, if unable, proceed direct CUBIT and hold as published, maintain 4000, squawk appropriate beacon code.



ELLENSBURG
ELN
FL240

NOTE: Turbojet aircraft descend via mach number until intercepting 280K, maintain 280K until 10000.

ELLENSBURG FOUR ARRIVAL (RNAV)

NOTE: Chart not to scale.

NW-1, 11 JUN 2026 to 09 JUL 2026