

TACOMA, WASHINGTON

ILS or LOC RWY 34

LOC I-TCM 108.5	APCH CRS 345°	Rwy Idg 10,108
		TDZE 322
		Arpt Elev 322

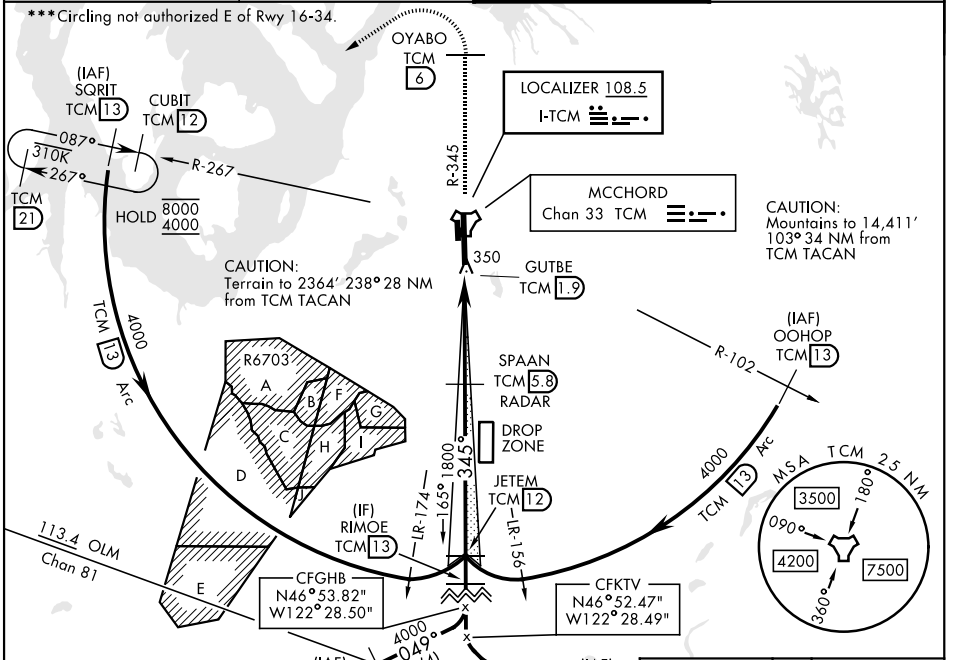
[USAF] MCCHORD FLD (JOINT BASE LEWIS MCCHORD) (KTTCM)

RADAR or DME required.

ALSF-2

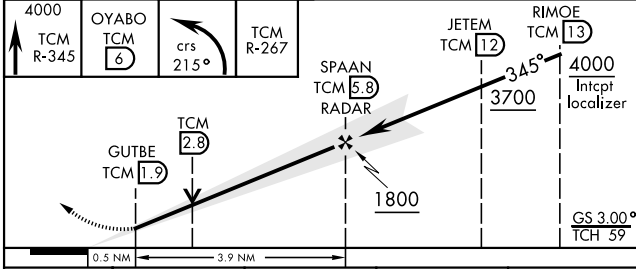
MISSED APPROACH: Climb to 4000 on TCM TACAN R-345 to OYABO, then turn left via 215° course to intercept TCM R-267 to CUBIT and hold, continue climb-in-hold to 4000. Cross OYABO at or above 3000.

ATIS 135.825 270.1	SEATTLE APP CON 126.5 377.15	TOWER 124.8 259.3	GND CON 118.175 279.65
------------------------------	--	-----------------------------	----------------------------------



ELEV 322	TDZE 322
----------	----------

EMERG SAFE ALT 100 NM 16,600



CATEGORY	A	B	C	D
S-ILS 34*	522/18 200		(200-1/2)	
S-LOC 34**	860/40	538 (600-3/4)	860/55	538 (600-1)
CIRCLING***	940-1	618 (700-1)	940-1 3/4 618 (700-1 3/4)	940-2 618 (700-2)

ELEV 322	TDZE 322
----------	----------

ASSAULT STRIP

TWR 461

GS 3.00° TCH 59'

FAF to MAP 3.9 NM

Knots	60	90	120	150	180
Min:Sec	3:54	2:36	1:57	1:34	1:18

TACOMA, WASHINGTON 47°08'N-122°29'W MCCHORD FLD (JOINT BASE LEWIS MCCHORD) (KTTCM)

Amtd 5 30NOV23

ILS or LOC RWY 34

NW-1, 11 JUN 2026 to 09 JUL 2026

NW-1, 11 JUN 2026 to 09 JUL 2026