

25191

OLYMPIC-FOUR DEPARTURE

MCCHORD FLD (JOINT BASE LEWIS MCCHORD) (KTCM)
[USAF] TACOMA, WASHINGTON

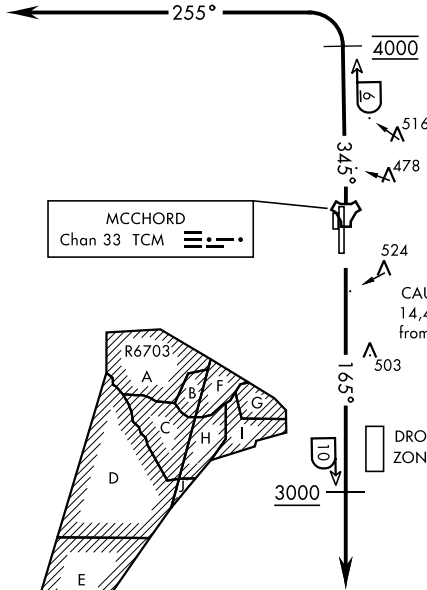
RADAR required

ATIS
135.825 270.1
GND CON
118.175 279.65
TOWER
124.8 259.3
SEATTLE DEP CON
126.5 377.15

If unable to make ATC charted crossing restrictions advise ATC prior to departure.

Maximum 250 KIAS

SEATTLE
116.8 SEA
Chan 115



MCCHORD
Chan 33 TCM

OLYMPIA
113.4 OLM
Chan 81



CAUTION: Mountains to 14,411' 103° 34' NM from McChord.

DROP ZONE

① 2270' from Rwy 34



DEPARTURE ROUTE DESCRIPTION

TAKEOFF RWY 16: Climb on track of 165° to cross TCM TACAN 10 DME at or above 3000. Expect radar vectors within TCM 8 DME. Maintain ATC assigned altitude.

TAKEOFF RWY 34: Climb on track 345° to cross TCM TACAN 6 DME at 4000. Then turn left tracking 255° to expect radar vectors. Maintain ATC assigned altitude.

OLYMPIC-FOUR DEPARTURE

TACOMA, WASHINGTON
MCCHORD FLD (JOINT BASE LEWIS MCCHORD) (KTCM)

NW-1, 11 JUN 2026 to 09 JUL 2026

NW-1, 11 JUN 2026 to 09 JUL 2026