

TACOMA, WASHINGTON

# TACAN RWY 16

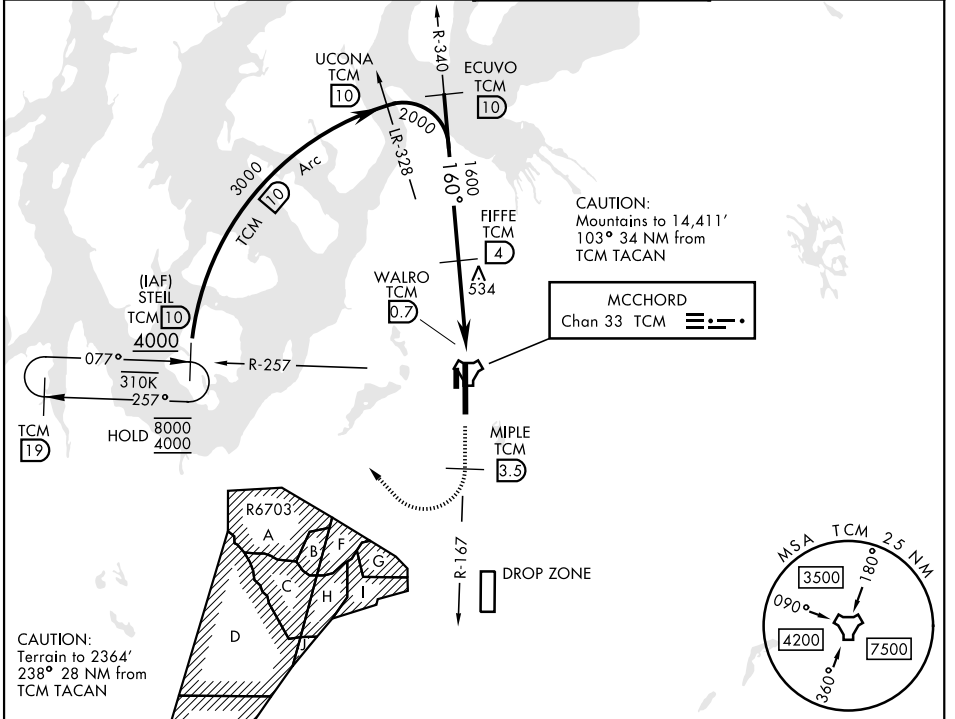
TACAN TCM Chan <b>33</b>	APCH CRS <b>160°</b>	Rwy Ldg <b>10,108</b> TDZE <b>286</b> Arpt Elev <b>322</b>
--------------------------	----------------------	--

[USAF] MCCHORD FLD (JOINT BASE LEWIS MCCHORD) (KTCM)

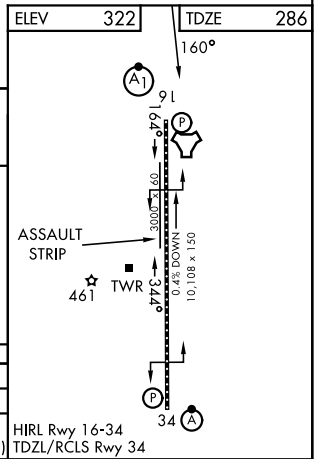
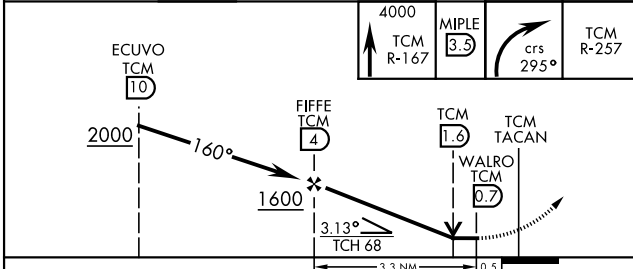
▼ \* When ALS inop, increase CAT AB RVR to 55, vis to 1 mile, CAT CDE vis to 1 3/8 miles.  
 \*\* Circling not authorized E of Rwy 16-34.

ALSF-1 MISSED APPROACH: Climb to 4000 on TCM TACAN R-167. At TCM 3.5 DME turn right via 295° course to intercept TCM R-257 to STEIL and hold, continue climb-in-hold to 4000.

ATIS <b>135.825 270.1</b>	SEATTLE APP CON <b>126.5 377.15</b>	TOWER <b>124.8 259.3</b>	GND CON <b>118.175 279.65</b>
------------------------------	--	-----------------------------	----------------------------------



ELEV 322	TDZE 286
----------	----------



CATEGORY	A	B	C	D	E
S-16 *	800/24	514 (500-1/2)	800/55	514	(500-1)
CIRCLING **	940-1 618 (700-1)		940-1 3/4 618 (700-1 3/4)	940-2 618 (700-2)	1020-2 1/2 698 (700-2 1/2)

TACOMA, WASHINGTON 47°08'N-122°29'W MCCHORD FLD (JOINT BASE LEWIS MCCHORD) (KTCM)

Amtd 4 20APR23

# TACAN RWY 16

NW-1, 11 JUN 2026 to 09 JUL 2026

NW-1, 11 JUN 2026 to 09 JUL 2026