

TACOMA, WASHINGTON

# TACAN RWY 34

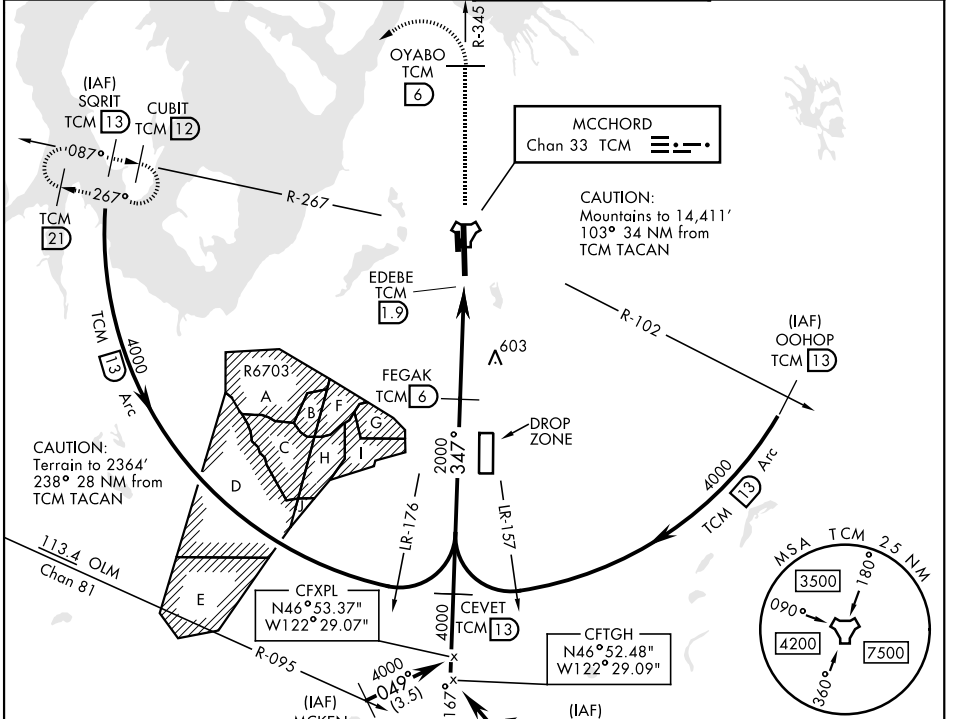
TACAN TCM Chan <b>33</b>	APCH CRS <b>347°</b>	Rwy Ldg <b>10,108</b> TDZE <b>322</b> Arprt Elev <b>322</b>
--------------------------	----------------------	---

[USAF] MCCORD FLD (JOINT BASE LEWIS MCCORD) (KTCM)

▼ \* When ALS inop, increase CAT AB RVR to 55, vis to 1 mile, CAT CD vis to 1½ miles.  
 \*\* Circling not authorized E of Rwy 16-34.

ALSF-2  MISSED APPROACH: Climb to 4000 on TCM TACAN R-345 to OYABO, then turn left via 215° course to intercept TCM R-267 to CUBIT and hold. Cross OYABO at or above 3000. Continue climb-in-hold to 4000.

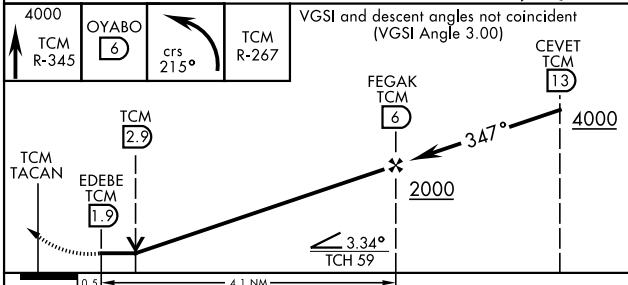
ATIS <b>135.825 270.1</b>	SEATTLE APP CON <b>126.5 377.15</b>	TOWER <b>124.8 259.3</b>	GND CON <b>118.175 279.65</b>
------------------------------	--	-----------------------------	----------------------------------



EMERG SAFE ALT 100 NM 16,600

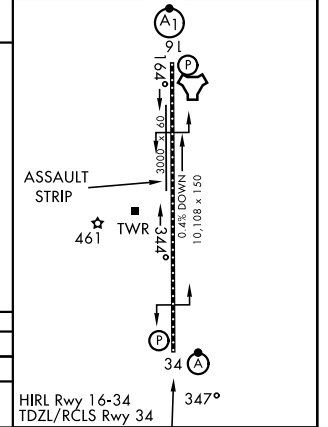
4000 TCM R-345 OYABO TCM 6 crs 215° TCM R-267

VGSI and descent angles not coincident (VGSI Angle 3.00)



CATEGORY	A	B	C	D
S-34*	860/24	538 (600-½)	860/55	538 (600-1)
CIRCLING **	940-1	618 (700-1)	940-1½ 618 (700-1½)	940-2 618 (700-2)

ELEV	322	TDZE	322
------	-----	------	-----



TACOMA, WASHINGTON 47°08'N-122°29'W MCCORD FLD (JOINT BASE LEWIS MCCORD) (KTCM)

Amtd 5 20APR23

# TACAN RWY 34

NW-1, 11 JUN 2026 to 09 JUL 2026

NW-1, 11 JUN 2026 to 09 JUL 2026