

# WHYTE SEVEN ARRIVAL

9200 TUF 60 of 9200 NUN 11 '1-WN

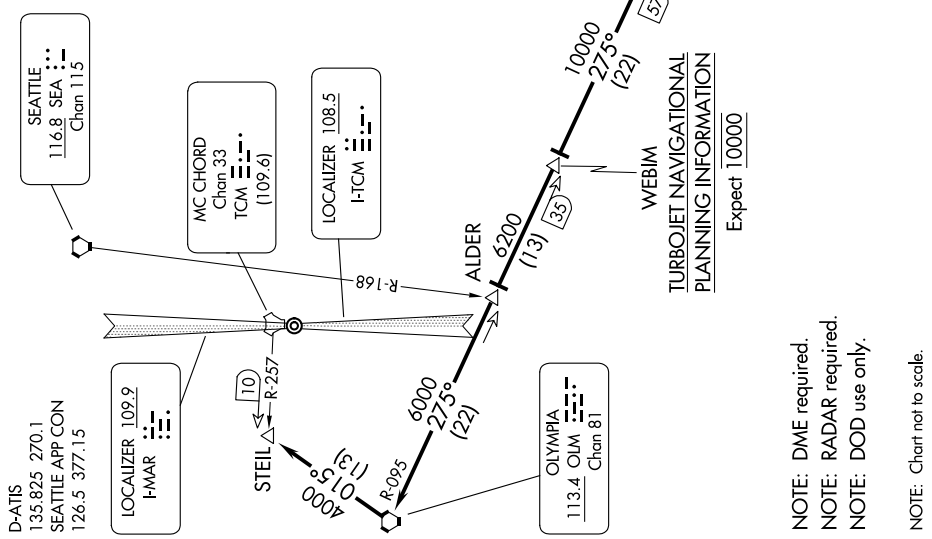
## ARRIVAL ROUTE DESCRIPTION

**PENDLETON TRANSITION (PDT.WHYTE7):** From over PDT VORTAC on PDT R-282 and OLM R-095 to WHYTE. Thence, . . . YAKIMA TRANSITION (YKM.WHYTE7): From over YKM VORTAC on YKM R-250 to WHYTE. Thence, . . .

. . . From over WHYTE on OLM R-095 to WEBIM, then on OLM R-095 to ALDER. Thence, . . .

**RUNWAY 34:** Expect ILS or LOC RWY 34 or ILS RWY 34 (CAT III) approach.

**RUNWAY 16:** On OLM R-095 to OLM VORTAC, then on OLM R-015 to STEIL, expect ILS or LOC Z RWY 16 or TACAN RWY 16 approach.



**TURBOJET NAVIGATIONAL PLANNING INFORMATION**  
Expect 10000

- NOTE: DME required.
- NOTE: RADAR required.
- NOTE: DOD use only.
- NOTE: Chart not to scale.

# WHYTE SEVEN ARRIVAL

NW-1, 11 JUN 2026 to 09 JUL 2026