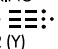


# TRICITIES THREE DEPARTURE (OBSTACLE)

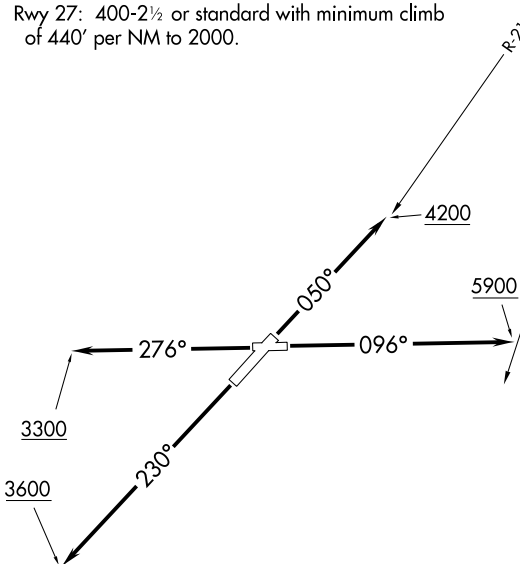
BRISTOL/JOHNSON/KINGSPORT, TENNESSEE

ATIS  
 118.25  
 APP CON ★  
 134.425 349.0  
 TRI CITY TOWER ★  
 119.5 (CTAF) 257.8  
 GND CON  
 121.7 348.6  
 UNICOM  
 122.95

GLADE SPRING  
 115.55 GZG   
 Chan 102 (Y)

### TAKEOFF MINIMUMS

- Rwy 5: Standard with minimum climb of 250' per NM to 2500 or 1100-3 for climb in visual conditions.
- Rwy 9: 200-1% or standard with minimum climb of 215' per NM to 2000, or alternatively, with standard takeoff minimums and a normal 200' per NM climb gradient, takeoff must occur no later than 1500' prior to DER.
- Rwy 23: 200-1% with minimum climb of 220' per NM to 4300 or standard with minimum climb of 370' per NM to 2300 or 1100-3 for climb in visual conditions.
- Rwy 27: 400-2½ or standard with minimum climb of 440' per NM to 2000.



NOTE: Chart not to scale.

### DEPARTURE ROUTE DESCRIPTION

- TAKEOFF RWY 5: Climb heading 050° to intercept GZG VOR/DME R-217 northeast bound to 4200 before proceeding on course.
- TAKEOFF RWY 9: Climb heading 096° to intercept GZG VOR/DME R-200 northbound to 5900 before proceeding on course.
- TAKEOFF RWY 23: Climb heading 230° to 3600 before proceeding on course.
- TAKEOFF RWY 27: Climb heading 276° to 3300 before proceeding on course.

VCOA RWY 5, 23: Obtain ATC approval for VCOA when requesting IFR clearance. Climb in visual conditions to cross Tri-Cities Airport at or above 2500 then climb to 3500 via GZG VOR/DME R-217 northeast bound before proceeding on course.

SE-1, 11 JUN 2026 to 09 JUL 2026

SE-1, 11 JUN 2026 to 09 JUL 2026

TRICITIES THREE DEPARTURE (OBSTACLE)

BRISTOL/JOHNSON/KINGSPORT, TENNESSEE

TAKEOFF OBSTACLE NOTES

- Rwy 5: T-L twr 678' from DER, 644' left of centerline, 50' AGL/1536' MSL.  
Trees beginning 1590' from DER, 858' left of centerline, up to 1582' MSL.  
Trees beginning 2338' from DER, 871' left of centerline, up to 1590' MSL.  
Trees beginning 3175' from DER, 951' left of centerline, up to 1619' MSL.  
Trees beginning 3584' from DER, 1038' left of centerline, up to 1626' MSL.  
Trees beginning 3768' from DER, 819' left of centerline, up to 1736' MSL.  
Trees beginning 1.4 NM from DER, 514' left of centerline, up to 1770' MSL.
- Rwy 9: Trees and lt pole beginning 67' from DER, 152' right of centerline, up to 1584' MSL.  
Trees beginning 182' from DER, 187' right of centerline, up to 100' AGL/1600' MSL.  
Tree 1.2 NM from DER, 1941' left of centerline, 1715' MSL.
- Rwy 23: Trees beginning 3538' from DER, 1309' right of centerline, up to 1657' MSL.  
Trees beginning 3865' from DER, 440' right of centerline, up to 1665' MSL.  
Trees beginning 5655' from DER, 353' left of centerline, up to 1634' MSL.  
Trees beginning 1 NM from DER, 26' left of centerline, up to 1666' MSL.  
Trees beginning 1.1 NM from DER, 69' right of centerline, up to 1675' MSL.
- Rwy 27: Terrain, fences, poles, T-L twrs and tree beginning 43' from DER, 90' right of centerline, up to 1552' MSL. Poles, tanks, lt poles and T-L twr beginning 244' from DER, 307' left of centerline, up to 1538' MSL. Trnsn twrs, trees and pole beginning 636' from DER, 26' left of centerline, up to 1561' MSL. Bldgs beginning 993' from DER, 162' right of centerline, up to 1555' MSL. Trees beginning 1157' from DER, 59' right of centerline, up to 1558' MSL. Trees beginning 1271' from DER, 121' right of centerline, up to 1573' MSL. Trees beginning 1449' from DER, 18' left of centerline, up to 1575' MSL. Trees, poles and monuments beginning 1548' from DER, 59' right of centerline, up to 1577' MSL. Trees beginning 1834' from DER, 33' right of centerline, up to 1582' MSL. Trees beginning 1882' from DER, 555' left of centerline, up to 1595' MSL. Trees beginning 2043' from DER, 106' right of centerline, up to 1632' MSL. Trees beginning 2185' from DER, 357' left of centerline, up to 1604' MSL. Poles, trees, T-L twrs and terrain beginning 2680' from DER, 5' left of centerline, up to 40' AGL/1649' MSL. Trees, T-L twrs and terrain beginning 3088' from DER, 62' right of centerline, up to 1645' MSL. Terrain and T-L twr beginning 4150' from DER, 24' right of centerline, up to 1663' MSL. Terrain and bush beginning 4151' from DER, 5' left of centerline, up to 1662' MSL. Terrain, trees and T-L twr beginning 4348' from DER, 59' right of centerline, up to 1729' MSL. Terrain, tree, bush beginning 4349' from DER, 6' left of centerline, up to 1679' MSL. Bush 4496' from DER, 202' left of centerline, 1681' MSL. Trees, terrain, bushes and pole beginning 4506' from DER, 7' left of centerline, up to 1726' MSL. Pole and tree beginning 4664' from DER, 10' left of centerline, up to 39' AGL/1735' MSL. Trees, terrain, pole beginning 4714' from DER, 374' left of centerline, up to 1738' MSL. Trees beginning 4725' from DER, 53' right of centerline, up to 1736' MSL. Trees beginning 4803' from DER, 127' left of centerline, up to 1771' MSL. Trees beginning 4815' from DER, 87' left of centerline, up to 1782' MSL. Trees beginning 1.5 NM from DER, 1789' right of centerline, up to 1778' MSL. Trees beginning 1.5 NM from DER, 1377' right of centerline, up to 1795' MSL. Trees beginning 1.5 NM from DER, 1435' right of centerline, up to 1804' MSL. Trees beginning 1.5 NM from DER, 1692' right of centerline, up to 1806' MSL. Trees beginning 1.6 NM from DER, 1335' right of centerline, up to 1822' MSL. Trees beginning 1.6 NM from DER, 1484' right of centerline, up to 1823' MSL. Trees beginning 1.6 NM from DER, 964' right of centerline, up to 1828' MSL. Trees beginning 1.6 NM from DER, 785' right of centerline, up to 1838' MSL. Trees beginning 1.7 NM from DER, 588' right of centerline, up to 1863' MSL. Trees beginning 1.7 NM from DER, 78' right of centerline, up to 1867' MSL. Trees beginning 1.8 NM from DER, 53' left of centerline, up to 1836' MSL. Tree 2 NM from DER, 1018' left of centerline, 1838' MSL.

SE-1, 11 JUN 2026 to 09 JUL 2026

SE-1, 11 JUN 2026 to 09 JUL 2026