

WAAS CH <b>72805</b> <b>W02A</b>	APP CRS <b>022°</b>	Rwy Ldg TDZE <b>1175</b> Apt Elev <b>1194</b>
--	------------------------	---

# RNAV (GPS) RWY 2

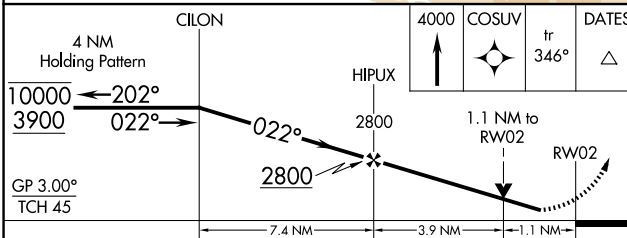
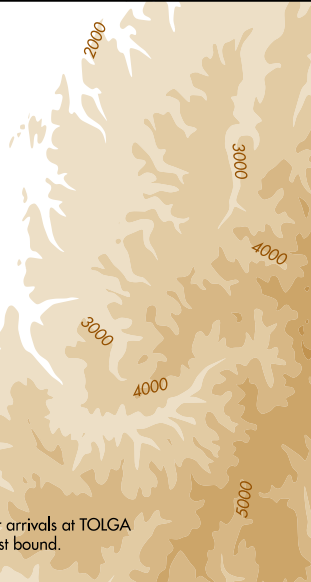
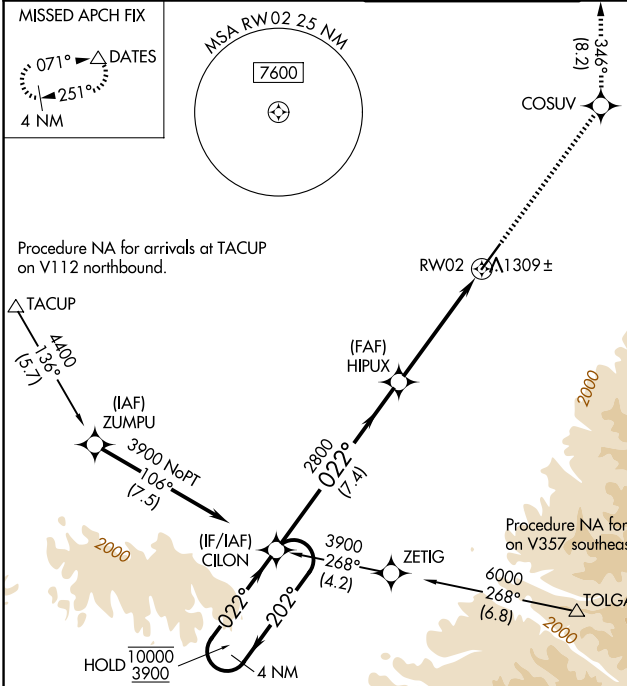
WALLA WALLA RGNL (ALW)

RNP APCH - GPS.

**⚠** Rwy 2 helicopter visibility reduction below  $\frac{3}{4}$  SM NA. For uncompensated Baro-VNAV systems, LNAV/VNAV NA below -11°C or above 54°C.

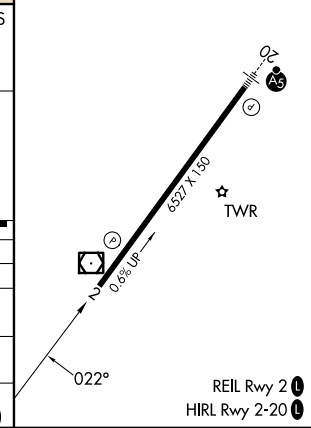
MISSED APPROACH: Climb to 4000 direct COSUV and on track 346° to DATES and hold.

ASOS <b>135.875</b>	SPOKANE APP CON * <b>133.15 379.15</b>	WALLA WALLA TOWER * <b>118.5 (CTAF) 289.4</b>	GND CON <b>121.6 289.4</b>	UNICOM <b>122.95</b>
------------------------	---	--	-------------------------------	-------------------------



ELEV 1194	<b>D</b> TDZE 1175
-----------	--------------------

CATEGORY	A	B	C	D
LPV DA		1375- $\frac{3}{4}$	200 (200- $\frac{3}{4}$ )	
LNAV/VNAV DA		1511-1	336 (400-1)	
LNAV MDA	1560-1	385 (400-1)	1560-1 $\frac{1}{8}$	385 (400-1 $\frac{1}{8}$ )
CIRCLING	1760-1 566 (600-1)	1820-1 626 (700-1)	2120-2 $\frac{3}{4}$ 926 (1000-2 $\frac{3}{4}$ )	2300-3 1106 (1200-3)



NW-1, 11 JUN 2026 to 09 JUL 2026

NW-1, 11 JUN 2026 to 09 JUL 2026